

POLAR ADVENTURES

Schiffs- und Flug- Expeditionen
in Arktis und Antarktis



Arktis & Antarktis

Expeditions-Seereisen

MV EXPLORER MV KINFISH

MV NANOOK MV VIKINGFJORD

MV POLARFRONT MV POLAR PIONEER

POLARADVENTURES Schiffs- und Flug-Expeditionen in Arktis und Antarktis

Reiseagentur Heinrich-Böll-Str. 40 * D-21335 Lüneburg * Deutschland

Tel +49-4131- 223474 Fax +49-4131-54255 infos@polaradventures.de www.polaradventures.de

POLAR ADVENTURES

Schiffs- und Flug- Expeditionen
in Arktis und Antarktis

Saison

Arktis 2023 & 24

Antarktis 2023-24

Reederei Direkt-Angebote

**ab-bis Hafen für individuelle
Planungen**

**alle Abfahrten der Saison inkl.
englischsprachiger Termine**

ARCTIC & ANTARCTIC

Expedition Micro Cruises

Private Expeditions

Photo Tours

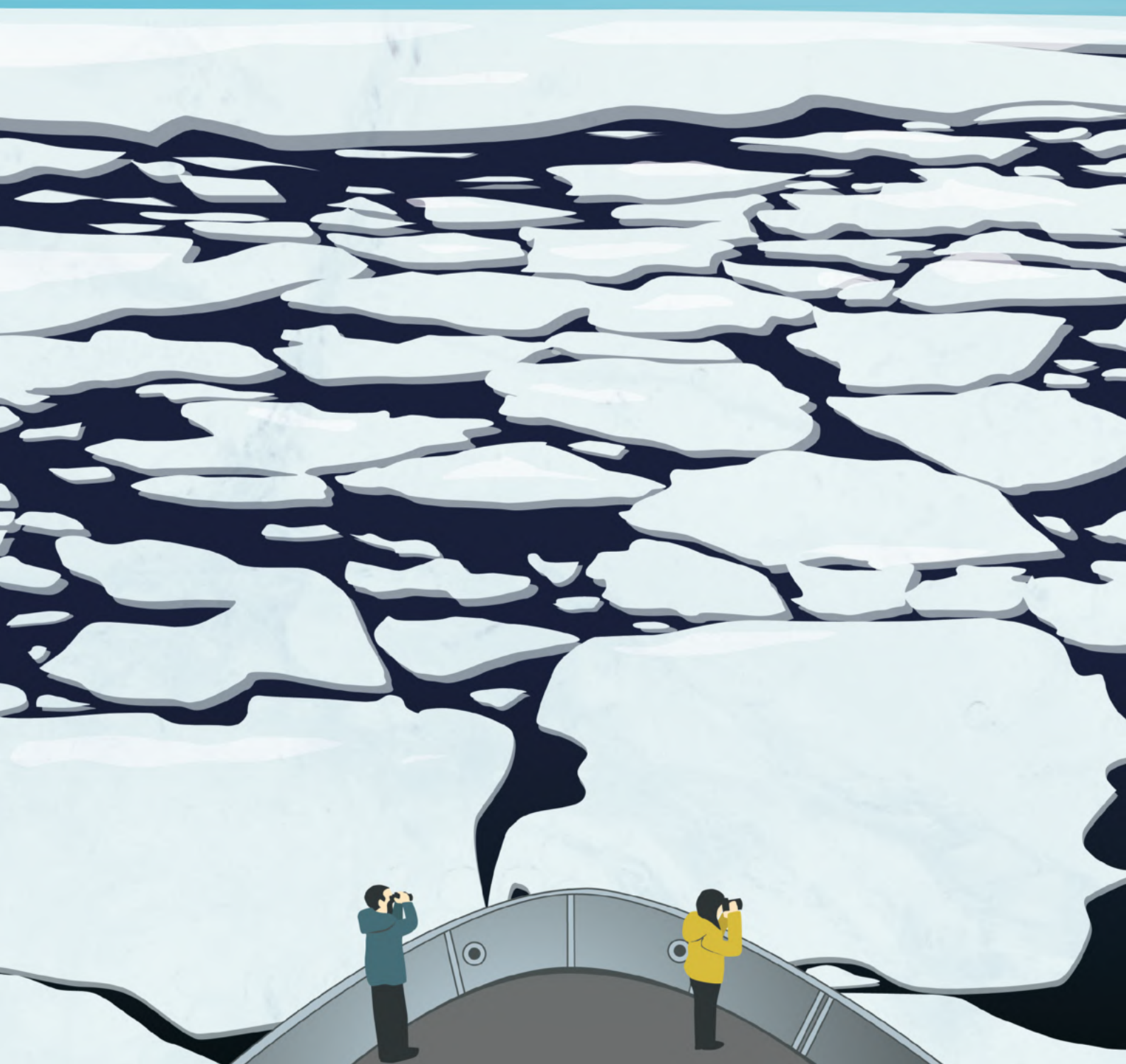


Table of Contents.

Travelling —
it leaves you speechless,
then turns you into
a storyteller.

Ibn Battuta
Explorer

Table of Contents.	2
Welcome	4
The Secret Atlas experience.	8
The Authentic Way to Experience the Polar Regions.	12
Svalbard	14
Europe's last great wilderness.	16
Natural Wonders of Svalbard Micro Cruise	18
Svalbard Pioneer Micro Cruise	20
Svalbard Encounter Micro Cruise	22
Svalbard Photography Expeditions	24
Greenland	26
Icebergs and glaciers.	28
East Greenland Explorer Micro Cruise	30
Northern Lights Photo Tour	32
South Georgia	34
The world's most remote Islands.	36
South Georgia Explorer	38
Antarctica	40
The last continent.	42
The Quest For The Polar Circle Fly & Cruise	44
Antarctica Discovery Fly & Cruise	46
Antarctica Explorer	48

Private Charters	52
Testimonials	54
Meet Your Expedition Leaders	56
Our Ships	60
MV Vikingfjord	62
MV Kinfish	64
Magellan Explorer	66
MV Polar Pioneer	68
Useful Information	72
Wildlife viewing & safety.	72
Sustainable travel.	72
Weather conditions.	72
A flexible approach.	72
Health & safety regulations.	72
Independent travellers.	72
Groups of 4+ travellers.	72
What's included.	74
Communication.	74
Travel insurance.	74
Payment options.	74
Bookings & enquiries.	74
Get In Touch	76



As seen in

FORBES

NATIONAL
GEOGRAPHIC

The Washington Post

Condé Nast
Traveler

FINANCIAL TIMES



Dear Explorer,

As you leaf through this brochure, you have taken the first step to embarking on the adventure of a lifetime.

Your journey may take you to the realm of the Polar bear, nestled within a pristine Arctic wilderness and home to 2,000 glaciers.

Perhaps your inner atlas is pointing you to one of the most remote islands on the planet with some of the largest quantities of wildlife on Earth, normally only seen in nature documentaries.

Maybe you dream of stepping ashore on the frozen 7th continent and witnessing the wildlife and places early explorers set up their camps.

Whatever your ambition is as an explorer, as you delve into Secret Atlas you will notice one big difference.

Our trips are made for explorers and that is why we take the smallest group sizes available in Svalbard, Greenland, Antarctica and South Georgia.

Are you ready to go exploring?

Notes





The Secret Atlas experience.



Real expedition ships that offer authentic experiences
As the new ships become larger and focus on luxury rather than the expedition itself, we feel a large part of the experience is lost. Our vessels are built for purpose ice strengthened expedition vessels that offer a good level of comfort whilst delivering outstanding small group expeditions on every voyage.



Passionate Guides that want to take you exploring.
The beauty of a small group expedition is that you get to participate in the exploration. Our trips are led by passionate expedition leaders and guides that want to share their passion and knowledge of the places we visit. We offer the best guide to guest ratio in the industry with 1:6 on our 12 Guest Expedition Micro cruises.



Unhurried time ashore.
The larger the group the more hurried the experience is ashore. Large ships run their shore landings like military operations with guests being herded along the shore and back again. That is not the way we believe the wilderness should be appreciated. On all our tours we offer maximum time ashore to appreciate the places we are visiting in the company of a small group.

WHY SECRET ATLAS?

- The smallest group sizes in the Arctic and Antarctic
- Authentic expedition vessels
- Passionate Guides
- Flexible approach to exploring
- Access all areas
- No waiting time



Access all areas.
A great advantage of a small expedition vessel is that we can access places larger vessels can't reach. In certain destinations such as South Georgia some landing sites are restricted for groups of over 50, and with our vessel we can visit them all. Our ships all have an open bridge policy so you can enjoy the experience of observing the ship during navigation.



We offer the smallest groups sizes available.
Our Secret ingredient to the perfect expedition experience is keeping our group sizes as small as possible. It offers our expeditions far greater flexibility and it offers our guests a far richer experience than visiting the wilderness in groups of 100+ other people. From just 12 guests per voyage in Svalbard and Greenland to 48 guests per voyage in South Georgia and Antarctica, we offer the smallest group sizes available in the polar regions.



We can accommodate all our guests in the Zodiacs at the same time.
We love taking all our guests exploring in the Zodiacs at the same time and this is something you will not find on a larger ship. Our time to launch the zodiacs is minimal and our efficiency means our guests get to see and experience more. Our waiting time to go ashore is minimal and there is no waiting for your group to be called as we all go together.



The Authentic Way to Experience the Polar Regions.

DURING OUR TOURS

- we educate explorers on the fragility of the environment.
- we educate explorers on what they can do to help protect the environment.
- we collect any litter we find on remote beaches.

Introduction

Real expedition ships that offer authentic experiences. As interest in the polar regions increases, so does the size of the cruise ships visiting its waters with some cruise ships now carrying over 300 passengers. We feel the best way to witness and to protect the fragile environment of the polar regions is by travelling in small, sustainable group sizes.

This is why we've created our Expedition Micro Cruises and Explorer Small Ship cruises with only 12 - 48 guests per voyage.

Travelling in a small group is a unique and intimate experience, allowing you the time to fully immerse yourself in ways impossible to achieve in a larger group. Take a moment to appreciate the silence of the Arctic in Svalbard or the sound of 450,000 King Penguins in South Georgia.

On all our vessels there is enough room for our explorers in the Zodiacs, so you'll never wait to go ashore.

On the shore, you will be in a small group allowing you the chance to connect with the outstanding nature. in a small group allowing you the chance to connect with the outstanding nature.



Svalbard

Explore Europe's last great wilderness. The realm of the polar bear, home to 2,000 glaciers and the most Northerly town on Earth.



Svalbard.

Europe's last great wilderness.



HOW TO GET THERE

Our Svalbard cruises depart from Longyearbyen, which is easily accessible via daily flights from Oslo in Norway. Oslo is well connected internationally.

Svalbard

Experience the beauty of Svalbard on a small group expedition, where you will encounter calving glaciers, unlimited pristine Arctic scenery, and an abundance of polar wildlife.

Because it's a Secret Atlas adventure, you will journey intimately on MV Vikingfjord or MV Kinfish in a group just 12 other explorers.

We offer a choice of exciting cruises to best fit your schedule, varying between 7 and 14 days in length, including two guided photo expeditions. On lucky days, we spot polar bears!

Svalbard, just 816 miles from the North Pole, is an archipelago of remote Arctic islands situated between Norway and the North Pole. The main town, Longyearbyen, is the most northerly settlement in the world inhabited all year round. Its position means that in the summer the sun doesn't set, creating 24 hours of daylight. In the winter months, the polar night ensures that the sun is absent for 84 days.

Witness an abundance of wildlife in their natural habitats; on our adventures, we frequently encounter polar bears, walrus, whales, Arctic foxes, and the Svalbard reindeer, a smaller reindeer subspecies that can only be found on the Svalbard archipelago.

Svalbard also happens to be a haven for avian life when migratory birds return from their long journey south to breed on the cliffs of the islands.

The main island of Spitsbergen is known for its remote, rugged landscapes and mountainous interior. The coastline is lined with steep fjords, carved by retreating glaciers over a period of 2.5 million years. With over 60% of the island covered by glacial ice, it is one of the few places where it's possible to get up close to glacier fronts and watch as large pieces of ice





Natural Wonders of Svalbard

PRICE FROM
€9,800 pp

DURATION
9 to 10 days

DEPARTURE PORT
Longyearbyen

MONTHS
May, June, July & August

GUESTS
12 Max

GUIDES
2

VESSEL
MV Vikingfjord
MV Kinfish

On this expedition, we will venture to the northern wilderness to explore the beautiful landscapes, wildlife, and glaciers of Northwest Spitsbergen.

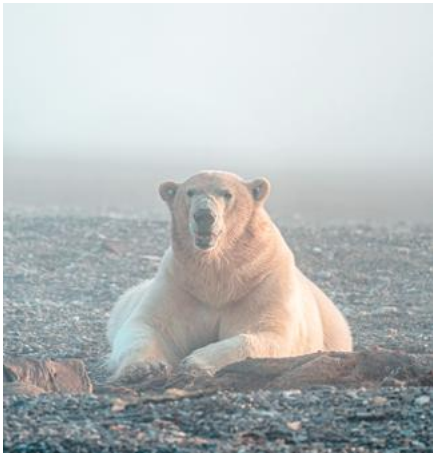
Every day is an adventure and we will use the Zodiac landing craft to explore walrus haulouts, to cruise the edge of the sea ice for wildlife including polar bears, and to take short hikes ashore to explore different natural and historical sites including glaciers and the raw nature of the Arctic. This is an intimate small-group experience with a minimum of one guide for every 6 guests.

Our 9-11 day itineraries offer a perfect length trip for those wanting to explore Svalbard with a good chance of seeing polar bears in the wild.

There is no single supplement for solo travellers on Vikingfjord voyages.

Svalbard voyage

Expedition Micro Cruise.



DATES	DURATION	SHIP	CABIN A	CABIN B	CABIN C
26 May - 3 June 2024	10 Days	MV Vikingfjord	€12,900	€12,900	€12,900
21 June - 30 June 2024	10 Days	MV Vikingfjord	€12,900	€12,900	€12,900
30 June - 8 July 2024	9 Days	MV Vikingfjord	€ 11,500	€ 11,500	€ 11,500
8 July - 17 July 2024	10 Days	MV Vikingfjord	€12,900	€12,900	€12,900
17 July - 26 July 2024	10 Days	MV Vikingfjord	€12,900	€12,900	€12,900
9 August - 18 August 2024	10 Days	MV Kinfish	€10,900	€9,800	n/a
18 August - 27 August 2024	10 Days	MV Kinfish	€10,900	€9,800	n/a
27 August - 5 September 2024	10 Days	MV Kinfish	€10,900	€9,800	n/a



Svalbard Pioneer

PRICE FROM
€15,500 pp

DURATION
12 - 14 days

DEPARTURE PORT
Longyearbyen

MONTHS
July & August

GUESTS
12 Max

GUIDES
2

VESSEL
MV Vikingfjord

As the sea around Svalbard opens up with the ice melting during the summer months, it gives us the opportunity to take you on our most detailed exploration of the archipelago.

We will set off to explore Svalbard and make daily shore landings with our expedition leader and guide to experience the raw beauty and majestic nature of Svalbard.

Our aim is to circumnavigate Spitsbergen and to explore the Austfonna Ice Cap, depending on conditions or spend extended time exploring the far north-east. This is an intimate small-group experience with a minimum of one guide for every 6 guests.

There is no single supplement for solo travellers on Vikingfjord voyages.

Svalbard voyage

Expedition Micro Cruise.



DATES	DURATION	SHIP	CABIN A	CABIN B	CABIN C
26th July - 8th August 2024	14 Days	MV Vikingfjord	€17,500	€17,500	€17,500
15th - 26th July 2025	12 Days	MV Vikingfjord	€15,500	€15,500	€15,500
26th July - 6th August 2025	12 Days	MV Vikingfjord	€15,500	€15,500	€15,500



Svalbard Encounter

PRICE FROM
€9,950 pp

DURATION
8 Days / 7 Nights

DEPARTURE PORT
Longyearbyen

MONTHS
May & June

GUESTS
12 Max

GUIDES
2

VESSEL
MV Vikingfjord

This shorter length Svalbard Expedition Micro Cruise takes place during the spring as Svalbard awakens from the winter months.

The focus on this expedition is to spend a week exploring the wilderness, glaciers and wild nature in the north of Spitsbergen. Expect 24 hours of daylight, witness an array of Arctic wildlife in its natural home and undertake some short hikes ashore. All this with 2 expert guides and just 12 guests.

Whilst there is a chance of seeing polar bears, we recommend our longer expeditions during the summer months for encountering wildlife. Consider our 10-Day Natural Wonders of Svalbard or our 14-day Svalbard Pioneer Micro Cruise for an increased chance in seeing polar bears.

There is no single supplement for solo travellers on Vikingfjord voyages.

Svalbard voyage

Expedition Micro Cruise.



DATES	DURATION	SHIP	CABIN A	CABIN B	CABIN C
12th- 19th May 2025	8 Days	MV Vikingfjord	€9,950	€9,950	€9,950
19th- 26th May 2025	8 Days	MV Vikingfjord	€9,950	€9,950	€9,950
13th - 20th June 2025	8 Days	MV Vikingfjord	€9,950	€9,950	€9,950
20th - 27th June 2025	8 Days	MV Vikingfjord	€9,950	€9,950	€9,950



Svalbard Photography Expeditions

PRICE FROM
€ 10,800 pp

DURATION
9 or 10 days

DEPARTURE PORT
Longyearbyen

GUIDED BY
Florian Ledoux & Paul Goldtein

GUESTS
12 Max
GUIDES
2

VESSEL
MV Vikingfjord
MV Kinfish

Explore and photograph the magical beauty of Svalbard on the hi-end, MV Explorer or MV Vikingfjord, with just 12 guests in total. Enjoy a hot tub or sauna on deck after a long day out exploring.

The aim of each trip is to maximise photo opportunities to include wildlife, glaciers, sea ice, and the outstanding natural beauty of Svalbard.

Choose between early in the season when you can expect lots of ice, frozen landscapes and wildlife or a longer expedition during the summer months.

Our photo tours are designed for people of all levels from professional, semi-pro, or amateur.

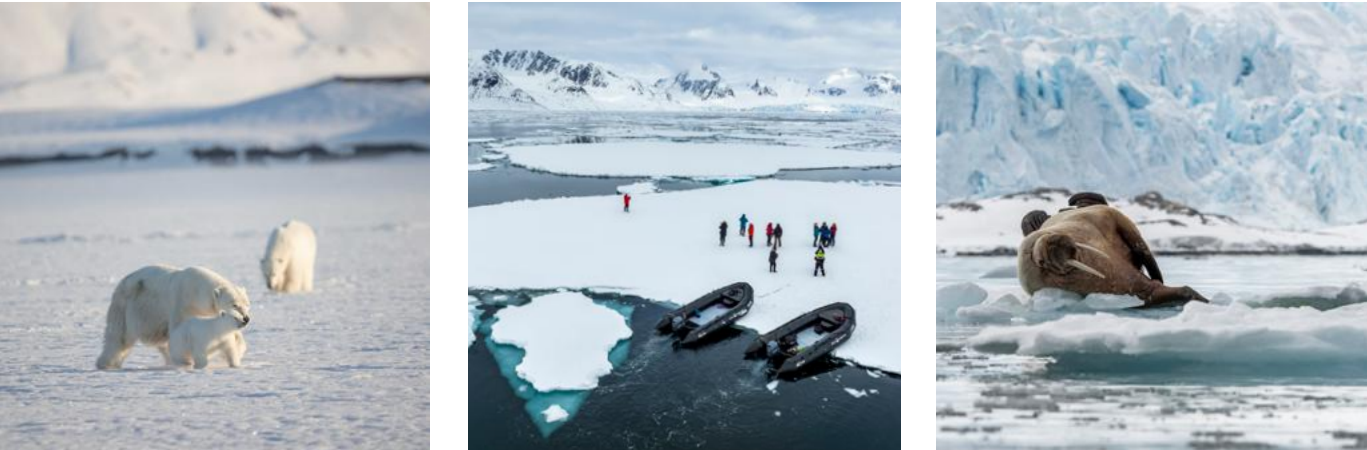
Our May tours are led by Florian Ledoux who is a polar bear filming specialist in Svalbard and his credits include Netflix, Disney and Nat Geo.

Our June tours are led by veteran wildlife photographer Paul Goldstein.

There is no single supplement for solo travellers on Vikingfjord voyages.

Svalbard voyage

Photo Expedition



DATES	DURATION	SHIP	CABIN A	CABIN B	CABIN C
16th - 24th April 2024	9 Days	MV Vikingfjord	€11,900	€11,900	€11,900
2nd - 10th May 2024	9 Days	MV Vikingfjord	€11,900	€11,900	€11,900
10th - 18th May 2024 w/ Florian Ledoux	9 Days	MV Vikingfjord	€11,900	€11,900	€11,900
10th - 18th May 2024 w/ Florian Ledoux	9 Days	MV Vikingfjord	€11,900	€11,900	€11,900
3rd - 12th June 2024 w/ Paul Goldtein	10 Days	MV Vikingfjord	€13,350	€13,350	€13,350
12th - 21st June 2024 w/ Paul Goldstein	10 Days	MV Vikingfjord	€13,350	€13,350	€13,350
5th - 14th September 2024	10 Days	MV Kinfish	€11,500	€ 10,800	-

Greenland

Explore the largest island on Earth. Home to a population of 56,000 inhabitants and the grandest icebergs imaginable.



Greenland.

Icebergs and glaciers.



HOW TO GET THERE

Our expedition cruise to Scoresby Sund departs on a charter flight from Reykjavik, the capital of Iceland. It is easily accessible with direct flights from Europe and America.

Greenland

Experience the mythical allure of Greenland. With a population of just over 56,000 inhabitants, it is also one of the least populated places on Earth.

Prepare for the raw beauty of giant icebergs and glaciers, and marvel at the pristine scenery and wildlife. On this adventure, you will visit and experience firsthand the local cultures in an ethical way.

In 2024, we're offering a once in a lifetime chance to explore the rarely visited Scoresby Sund in East Greenland with the additional option of sailing there from Svalbard on our 15-day Artic Pioneer Voyage.

The coastline of East Greenland is a stunning natural paradise with barely any signs of human development outside of the the remote village of Ittoqqortoormiit. Venture with us into Scoresby Sund and explore the world's longest fjord system framed by steep sided mountains with fjords full of cathedral sized icebergs on this once-in-a-lifetime experience.

A huge draw of a small ship adventure to Greenland is meeting the people that live there. On all our adventures, we aim to visit the local settlement and experience the Greenlandic way of life in a personal way that is only possible when travelling with a small group.

Notes





East Greenland Explorer Fly & Cruise

PRICE
€9,900 pp

DURATION
8 days / 7 nights

DEPARTURE PORT
Reykjavik, Iceland

MONTH
August & September

GUESTS
12

GUIDES
2

VESSEL
MV Vikingfjord

An 8-day expedition voyage to explore the Arctic wilderness of Scoresby Sund, the longest fjord system on Earth, located on Greenland's remote north-east coast.

Witness the majesty of towering icebergs and untouched landscapes as you sail through steep-sided fjords. With two expert guides and only 12 guests, you'll have the opportunity to make shore landings and immerse yourself in the pristine wilderness. Don't miss out on this intrepid expedition of a lifetime.

The journey begins with a charter flight from Reykjavik, Iceland to Constable Point high above the Arctic circle in East Greenland. Upon arrival, join the ship in the evening and get ready for an unforgettable experience.

For the next six days, explore the stunning landscapes of Scoresby Sund. We will sail through a pristine wilderness filled with icebergs and fjords. Each day, the expedition team will take you exploring with the Zodiacs and undertake some shorter hikes ashore, giving you the chance to get up close and personal with the natural beauty of the region. If conditions permit, we plan to circumnavigate Milne Island. For the best chance of seeing the Northern Lights choose a trip in September.



DATES	DURATION	VESSEL	CABIN A	CABIN B	CABIN C
22nd - 29th August 2024	8 days	MV Vikingfjord	€ 9,900	€ 9,900	€ 9,900
29th August - 5th September 2024	8 days	MV Vikingfjord	€ 9,900	€ 9,900	€ 9,900
5th - 12th September 2024	8 days	MV Vikingfjord	€ 9,900	€ 9,900	€ 9,900
12th - 19th September 2024	8 days	MV Vikingfjord	€ 9,900	€ 9,900	€ 9,900
26th September - 3rd October 2024	8 days	MV Vikingfjord	€ 9,900	€ 9,900	€ 9,900

Price quoted excludes a mandatory return charter flight between Reykjavik and East Greenland and a 2 night Iceland hotel stay a night before and after the flight which costs an additional €2,500 per person.



Scoresby Sund Northern Lights and Wild Landscapes Photo Tour

PRICE
€9,900 pp

DURATION
8 days / 7 nights

DEPARTURE
Reykjavik, Iceland

MONTH
September

GUESTS
12

GUIDES
2

VESSEL
MV Vikingfjord

Join a Greenland photo tour to Scoresby with Arctic photography and northern lights expert Virgil Regioni. Experience this unique voyage to photograph the mythical Scoresby Sund, the largest fjord system in the world with a world-class photographer, and just 12 other like-minded photographers.

This voyage takes places during the latter half of September at the optimum time for encountering the Northern Lights. Whilst never guaranteed, there is a chance to witness this phenomenon in one of the most scenic places on Earth with zero light pollution and majestic mountains all around.

This is a once-in-a-lifetime opportunity to follow in the photograph wild landscapes, icebergs and the Northern Lights in a remote wilderness that is seldom visited.



DATES	DURATION	VESSEL	CABIN A	CABIN B	CABIN C
19th - 26th September 2024	8 days	MV Vikingfjord	€ 9,900	€ 9,900	€ 9,900

Price quoted excludes a mandatory return charter flight between Reykjavik and East Greenland and a 2 night Iceland hotel stay a night before and after the flight which costs an additional €2,500 per person.

South Georgia

Encounter one of the world's most remote Islands. Home to a population 450,000 King Penguins, one of the greatest natural spectacles on Earth.



South Georgia. The world's most remote Islands.



HOW TO GET THERE

The trip will depart from and return to Port Stanley on the Falkland Islands with domestic flight connections to Santiago, Chile.

South Georgia.

South Georgia is the place to visit if you want to see a nature documentary unfold right in front of your eyes. It is no wonder that South Georgia is home to some of the largest quantities of wildlife on Earth. Imagine standing on a beach surrounded by over 100,000 King Penguins, Elephant Seals, and an abundance of avian life.

This small ship adventure is the most in-depth South Georgia expedition available. We have designed it to maximize the time spent ashore at South Georgia's breathtaking wildlife sites. Unlike trips on larger vessels, the time spent ashore will be unhurried and allow you time to experience and photograph the fantastic nature firsthand. All guests will be split into small groups to maximize photography and wildlife viewing opportunities.

We will visit the breathtaking St Andrew's Bay, home to over 100,000 King Penguins where we aim to immerse ourselves in one of the most incredible natural wonders on earth. Expect to encounter 4 species of penguins and an abundance of albatrosses and Elephant seals. We will visit Grytviken and pay homage to the explorer Ernest Shackleton. On this trip, we are taking just 48 guests and it is ideal for photographers, wildlife watchers and enthusiasts of South Georgia.

Notes





South Georgia Explorer

PRICE FROM
\$13,995 pp

DURATION
15 days / 14 nights

DEPARTURE PORT
Port Stanley, Falkland Islands

MONTH
February

GUESTS
48 Max

GUIDES
5

VESSEL
Polar Pioneer

A 15-day in-depth wildlife viewing and photography exploration of South Georgia's spectacular nature.

This expedition is aimed for those wanting to spend the maximum amount of unhurried time ashore observing wildlife and is suited for wildlife watchers and photographers alike. If conditions allow, we will hike the last part of Shackleton's famous traverse of South Georgia from Fortuna to Stromness. What makes this trip even more special is our vessel takes just 48 guests and when you are ashore you will be in a small group of just 12 guests for an intimate wildlife and photography experience. Travelling on a small expedition vessel allows us to visit many sites along the coast that larger ships are not allowed to land and get closer to South Georgia's incredible nature. This trip will take you ashore to view King Penguin colonies, Elephant Seals, Fur Seals, and an abundance of birdlife, such as albatrosses. Pro photographers will accompany you to help you successfully capture South Georgia's wild and stunning landscapes from the ship and shore.



DATES	DURATION	SHIP	CABIN A	CABIN B	CABIN C	CABIN D	CABIN E
24th February - 9th March 2024	15 days	MV Polar Pioneer	\$18,995	\$17,995	\$16,995	\$15,795	\$13,995

Antarctica

Follow the footsteps of explorers and step ashore on the fabled 7th continent at the ends of the Earth.



Antarctica.

The last continent.



HOW TO GET THERE

Our fly and cruise expeditions depart from Punta Arenas in Chile. Our other expeditions depart from and return to Ushuaia, Argentina with international flight connections.

Antarctica.

Welcome to Antarctica, the wildest and least visited continent on the planet. During the summer months the Antarctic Peninsula opens up from the sea ice that surrounds it during the winter and becomes ripe for exploring.

Antarctica is the world's 7th and least visited continent with no permanent population. It is the perfect place to explore on an expedition cruise.

Visitors will be greeted with a frozen paradise that offers outstanding natural beauty, wildlife galore, glaciers and icebergs. Our small group voyage focuses on spending the maximum amount of time ashore enjoying the nature and exploring.

For visitors it offers a rare glimpse into another world. Full of natural beauty, incredible scenery, ice, a diverse array of wildlife and interesting historical sites.

Antarctica has 7 species of penguin and as there are no land based predators so they thrive on land. It is one of the best places on earth for wildlife photography.

An expedition to Antarctica is a truly life-changing experience.

Notes





The Quest For The Polar Circle Fly & Cruise

PRICE FROM
\$22,795 pp

DURATION
10 days / 9 nights
(7 nights on ship, 2 nights in hotel)

DEPARTURE PORT
Punta Arenas, Chile

MONTH
January & February

GUESTS
73 Max

GUIDES
12

VESSEL
MV Magellan Explorer

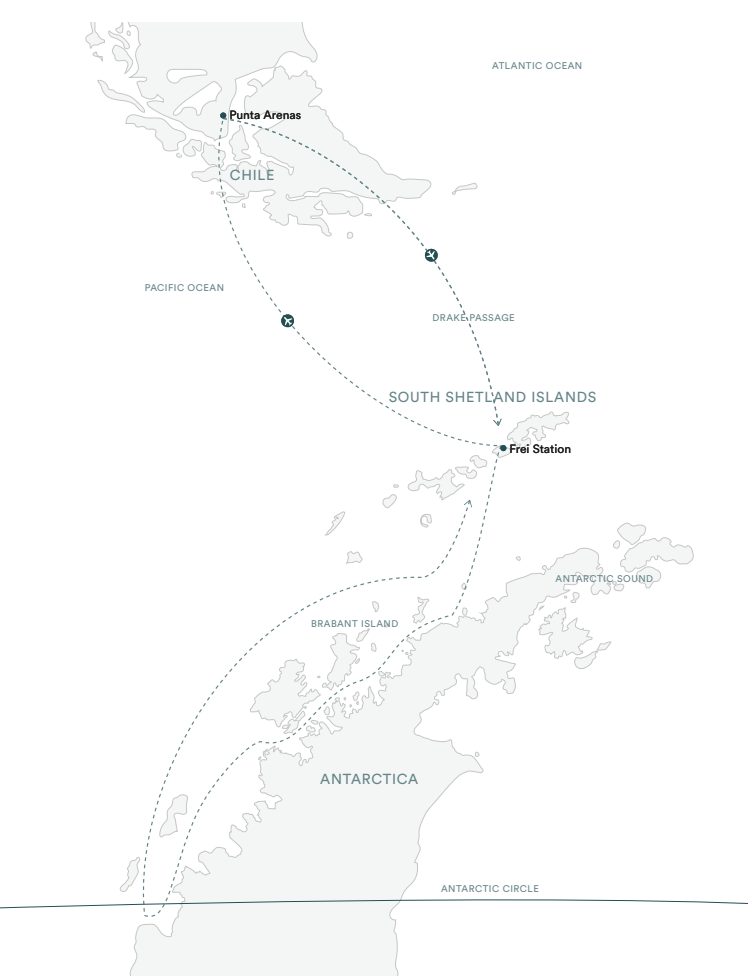
Embark on an unforgettable adventure on this 10-day in-depth expedition to explore the furthest reaches of the Antarctic peninsula with a Secret Atlas group.

Fly the Drake Passage and save 4 days at sea. When you step onboard in Antarctica we will start exploring right away. A charter flight between Punta Arenas, Chile and King George Island, Antarctica is included.

Our goal is to reach the Antarctic Polar Circle, located at approximately 66° south of the equator, and our expert Expedition Team carefully plans each voyage based on the ever-changing Antarctic weather.

With each day of the aircruise filled with exciting opportunities to explore, this is one of the most thrilling expeditions we offer. Don't miss out on this once-in-a-lifetime experience!

This expedition takes place on one of Antarctica's smallest ships, the Magellan Explorer, with just 76 guests and a guide team of 12. The ship was launched in 2019 and guests can expect outstanding levels of comforts, large ensuite cabins and a tastefully designed interior.



DATES		SHIP	CABIN A	CABIN B	CABIN C	CABIN D	CABIN E	CABIN F	CABIN G
24th January - 2nd February 2025	10 days	MV Magellan Explorer	\$24,995	\$22,795	\$26,995	\$29,795	\$32,995	\$36,495	\$36,495

Price is per person and includes flights from Punta Arenas to King George Island, Antarctica.

Kayaking is available on this departure as an optional extra for \$995 per person.

This expedition is operated by a trusted Secret Atlas partner. Expect the same outstanding guides and small ship experience onboard with a group of fellow Secret Atlas travelers.



Antarctica Discovery Fly & Cruise

PRICE FROM
\$17,995 pp

DURATION
8 days / 7 nights
(5 nights on ship, 2 nights in hotel)

DEPARTURE PORT
Punta Arenas, Chile

MONTH
January & February

GUESTS
73 Max

GUIDES
12

VESSEL
MV Magellan Explorer

Join a Secret Atlas group onboard Magellan Explorer, one of the smallest and most comfortable ships in Antarctica, with just 73 guests in total.

This Antarctica Discovery Fly & Cruise is a unique and exciting way to explore the Antarctic Peninsula and its surrounding islands in a small group of fellow explorers and expert guides.

This shorter length expedition allows you to save 5 days in total sailing the Drake passage with flights included between Chile and Antarctica. When you land in King George Island you will board MV Magellan Explorer and head straight out to begin your expedition.

Our plan is to explore the South Shetland Islands and the west coast of the Antarctic Peninsula known for their stunning landscapes and abundant wildlife, including penguins, seals, and whales. Daily activities include shore landings, wildlife watching, zodiac cruises, and kayaking is available as an optional extra. Observing these animals in their natural habitat is an unforgettable experience and offers a rare opportunity to connect with nature.



DATES	DURATION	SHIP	CABIN A	CABIN B	CABIN C	CABIN D	CABIN E	CABIN F	CABIN G
11th - 18th December 2024	8 days	MV Magellan Explorer	\$19,795	\$17,995	\$21,995	\$23,995	\$27,495	\$28,995	\$28,995
31st December - 7th January 2025	8 days	MV Magellan Explorer	\$19,995	\$18,795	\$22,995	\$24,995	\$27,995	\$29,995	\$29,995
5th - 12th February	8 days	MV Magellan Explorer	\$19,795	\$17,995	\$21,995	\$23,995	\$27,495	\$28,995	\$28,995

Price is per person and includes flights from Punta Arenas to King george Island, Antarctica.

Kayaking is available on theis departure as an optional extra for \$995 per person.

This expedition is operated by a trusted Secret Atlas partner. Expect the same outstanding guides and small ship experience onboard with a group of fellow Secret Atlas travelers.



Antarctica Explorer

PRICE FROM
\$10,995 pp

DURATION
12 days / 11 nights

DEPARTURE PORT
Ushuaia, Argentina

MONTH
February

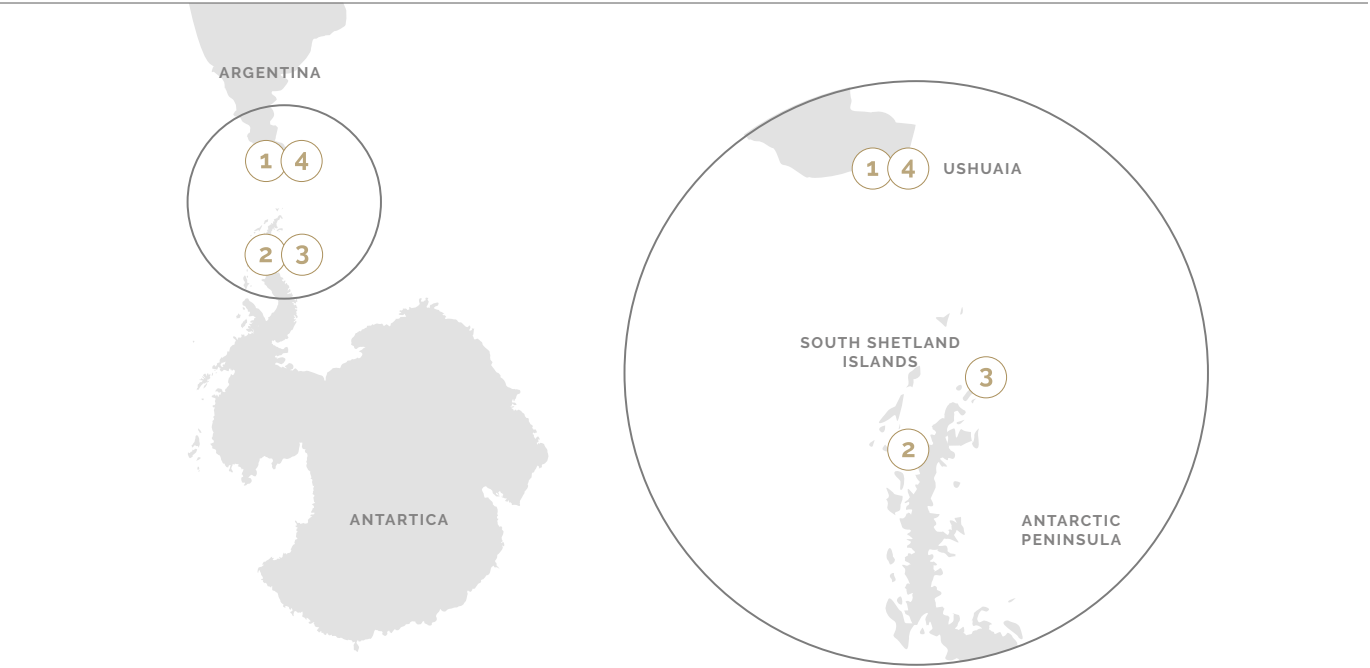
GUESTS
48 Max

GUIDES
6

VESSEL
MV Polar Pioneer

Join Secret Atlas on a 12-day in-depth wildlife viewing and photography expedition to explore the Antarctic peninsula.

This expedition is aimed at those wanting to spend the maximum amount of unhurried time ashore observing wildlife and is suited for photographers and wildlife watchers. What makes this trip even more special is that our vessel takes just 48 guests, the smallest group size in Antarctica. When you are ashore you will be in a small group of just 12 guests for an intimate wildlife and photography experience. Travelling on a small expedition vessel gives us more flexibility, more time ashore and allows us to visit landing sites that the large cruise ships can't visit. This voyage takes place on Polar Pioneer, a true expedition vessel built for the polar latitudes.



DATES	DURATION	SHIP	CABIN A	CABIN B	CABIN C	CABIN D	CABIN E
1st – 12th January 2024	15 days	MV Polar Pioneer	\$15,995	\$14,495	\$13,495	\$12,495	\$10,995





Private Charters

Svalbard

Greenland

Antarctica

South Georgia

PRIVATE EXPEDITIONS

Secret Atlas offers a fully bespoke expedition planning service for private groups looking for the experience of a lifetime.

Our private yacht expeditions are a once in a lifetime experience.

Have you dreamed of following in the footsteps of famous explorers and visiting remote polar regions rarely seen by others? Join our highly experienced expedition team on a private yacht expedition to take and witness the most remote corners of our planet from Svalbard to Greenland, and to Antarctica.

Our passion is for exploring and we will take you on a real expedition from the comfort of a private ice-strengthened expedition motor yacht. Our voyages come complete with everything you need with a fully crewed expedition motor yacht, an expedition team with extensive knowledge of the area, a chef who will prepare freshly cooked meals and housekeeping. All our yacht expeditions are all tailor-made to suit your interests and what you would like to experience.



“We were lucky and saw polar bears. It was a wonderful trip and a once in a lifetime experience.”

Julia.



Meet Your Expedition Leaders.

Secret Atlas works with the most experienced Expedition Leaders in the industry who are all passionate about exploring the polar regions.

Collectively our team has over 250 years experience delivering hundreds of successful Arctic and Antarctic expeditions.

Our leaders are highly experienced and trained in polar environments and are there for both your safety and to deliver an outstanding experience for you.

They have outstanding knowledge about nature and the environment and share our ethics around conservation and respect for the places we explore.

When you step onboard a Secret Atlas expedition you know you are in safe hands.



JOHN RODSTED
Expeditions: 200 +

John is a true explorer who has spent the last 30 years wandering the world and making an impact.

John's career spans 40 years in the photographic industry. Originally trained as a commercial photographer, he has impacted the world of imagery from the moment he set up his own studio in Melbourne at 22.

Today, he is not only known for his award-winning work as a photojournalist of communities at risk, but also for his artistic and written work.



METTE ELISEUSSEN
Expeditions: 100 +

Mette has been a wilderness guide in the Arctic and Antarctic for over twelve years on small ship expeditions.

Mette is a keen naturalist who enjoys learning and sharing her passion for flora, fauna and the natural world.

Mette has been active in creating a new international treaty to ban cluster bombs and is currently spearheading the international efforts to get the Pacific island nations to join the treaty.

She will do anything to make this your trip of a lifetime!



MARIANO CURIEL
Expeditions: 200 +

Mariano is a senior polar guide and expedition leader with a wealth of experience in the execution and management of operations.

From a young age, he cultivated a pioneering sense of adventure and a deep respect for the polar regions since he first witnessed Antarctica.

Following that first visit he never looked back and for over twenty years he has been guiding and leading projects in the Antarctic, Greenland, and Svalbard. As a seasoned expedition veteran, Mariano has sailed pole to pole, becoming the first Argentinian to ski across Greenland 2016.



PAUL GOLDSTEIN

Expeditions: 100+

Paul is an outspoken conservationist, award-winning photographer and guide with a large following that fully embrace his unique style of teaching and leadership.

With nearly 40 years of travel experience and working on all seven continents, Paul Goldstein has truly earned his reputation as an avid conservation campaigner and travel expert on wildlife tours in Africa, Asia, South America and the Polar regions. According to the Sunday Times, he is 'preposterously vivacious, a guide of almost psychotic gusto' and they also added 'no-one will drag you up the wildlife photography ladder quicker.'



VIRGILL REGLIONI

Expeditions: 50 +

Virgil is an expedition leader in the polar regions since 2016. He is a professional photographer specialised in polar landscapes with a particular focus on the famous Northern lights.

Virgil was awarded in several international photography competitions and was part of the 2021 & 2022 Best Northern light photographer of the year collection with his powerful story telling and unique impactful photography style. Following this accomplishment, he also made contributions for the European Space Agency thanks to his renown images. During late winters, he is educating and teaching photography based in Tromsø, Northern Norway and shares his love for the untouched polar dark nights and remote locations.



DAVID BERG

Expeditions: 200 +

David is an accomplished professional polar guide from Sweden who has led expeditions in Svalbard, Greenland, Scotland, Iceland, the Faroe Islands, South Georgia, the Falkland Islands and Antarctica.

He truly has the polar bug and enjoys sharing his passion, knowledge and enthusiasm with all those that travel with him.



OMBLIN CHABASSEUR

Expeditions: 75 +

Always attracted by sports in nature, her passion for Polar Regions really started when she decided to live in Finland to finish her studies. She was very impressed by the beauty of the landscapes, the serenity, the silence and the wildlife... From then, she dedicated all her free time to these areas, first of all in Svalbard, then Greenland, and she finally worked in a travel agency specialized in these regions, where she created on-demand trips.

Omblin finally left the office to become a guide in these areas and worked all over the Arctic and Antarctic for more than 12 years now. Either guide or expedition leader, she gives all of her energy.



FLORIAN LEDOUX

Expeditions: 20 +

Florian is an award-winning photographer and filmmaker who is passionate about protecting the Arctic through conservation photography.

Florian brings with him years of knowledge and experience of photographing in Svalbard on every Secret Atlas Trip.

His most recent assignment was filming the new Disney production 'Polar Bear' shot in Svalbard

Florian's work has been published in magazines like National Geographic, Time US, Géo France, and Spain, Oceanographic UK, National Geographic Traveler, as well as in the international daily press.

Our Ships

All our vessels are ice strengthened expedition vessels that offer comfort and character whilst delivering outstanding small group expeditions on every voyage.





MV Vikingfjord.

Cruises
Photo Tours
Private Charters

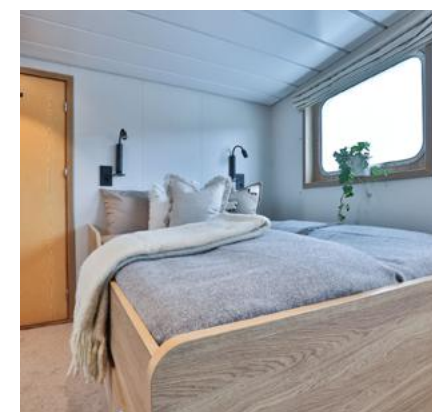
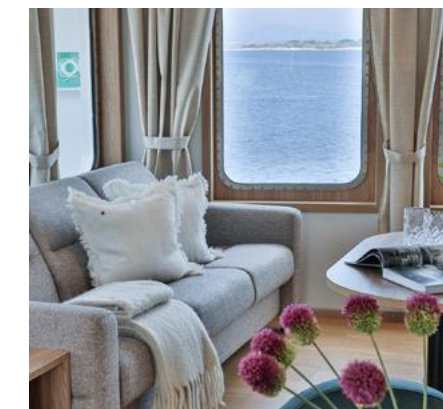
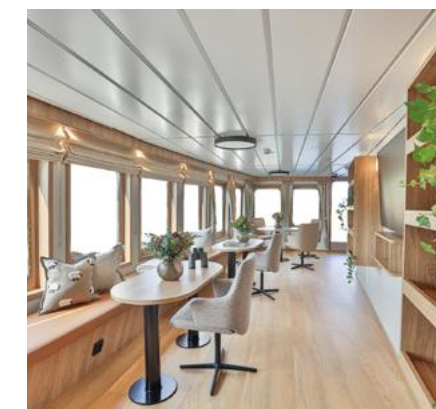
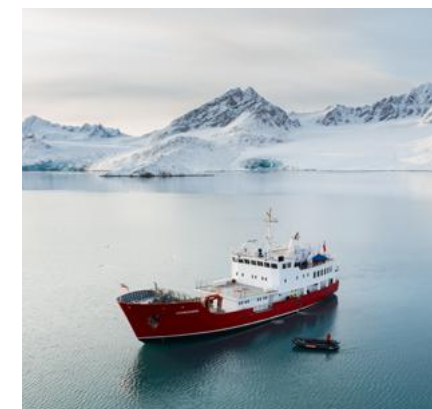
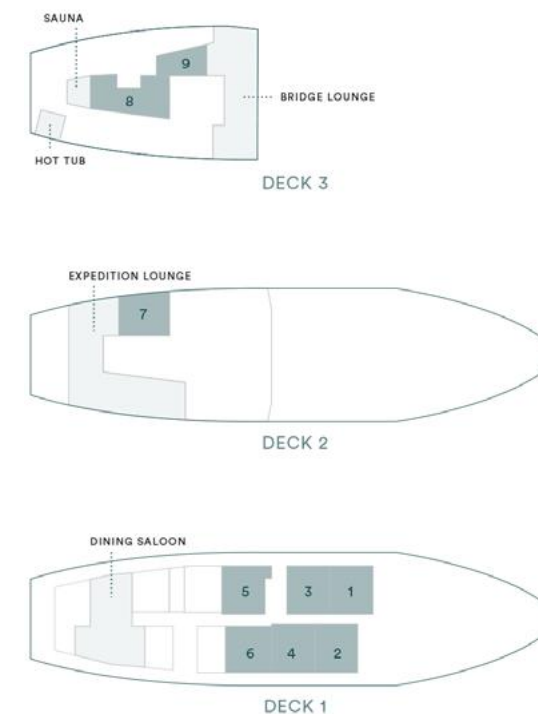
The most environmentally friendly small expedition vessel in the Arctic with new systems creating a 95% reduction in NOX emissions and increased efficiency.

Rebuilt from the ground up around the guest experience, Vikingfjord offers a new level of comfort with ensuite cabins, open plan panoramic lounge and restaurant, on deck sauna and hot pool with a view, large mud room and ample equipment storage.

Built to deliver an outstanding expedition experience, Vikingfjord has an ice strengthened hull for navigating the pack ice and is equipped with 2 zodiacs for exploring.

Vikingfjord accommodates 12 guests in 9 ensuite cabins that can be configured as doubles, twin and singles.

Vikingfjord has no single supplement for solo travellers.



Type A - Double with En-suite
Sleeps 2
Located on deck 3
Ensuite shower and toilet
Windows
Cabin 8

Secret Atlas



Type B - Double / Twin with En-suite
Sleeps 2
Located on deck 1
Ensuite shower and toilet
Windows
Cabins 1-5



Type C - Single with En suite
Sleeps 1
Located on decks 1 & 2
Ensuite shower and toilet
Windows
Cabins 6 & 7

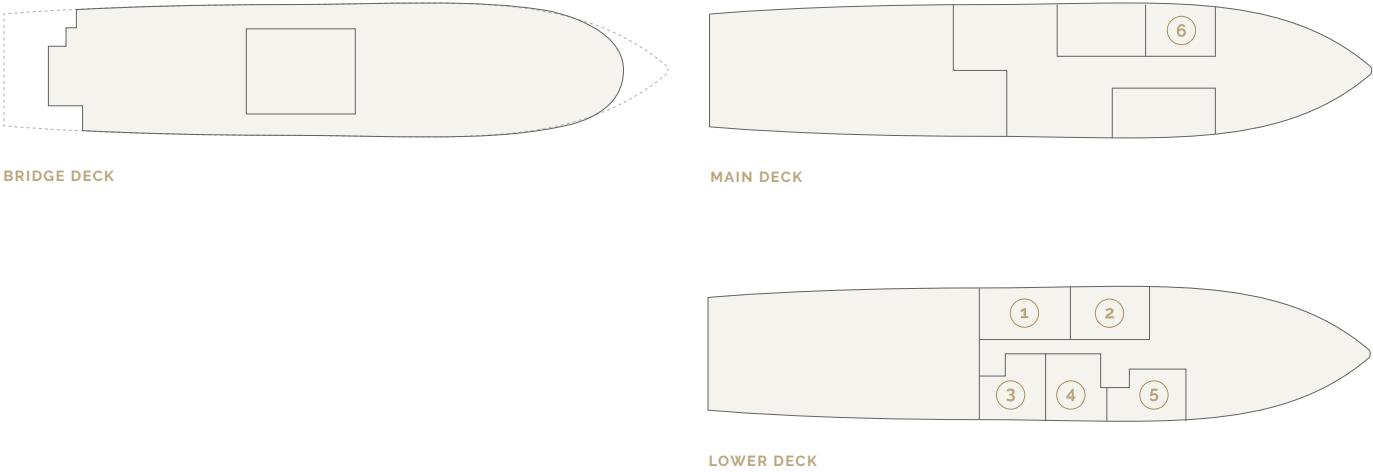


MV Kingfish.

Cruises
Photo Tours
Private Charters

Kingfish is a hi-spec expedition research vessel with an ice-strengthened hull. Her interior has been refurbished to a high standard and has accommodation for 12 guests across 6 cabins (all with ensuite).

She is equipped with 2 Zodiacs for shore landings and exploring.



1 CABIN 1 2 CABIN 2 3 CABIN 3 4 CABIN 4 5 CABIN 5 6 CABIN 6



Cabin 1 (A)
Sleeps 2 in lower twin berths (option to sleep 4 in bunks)
Ensuite shower and toilet
Portholes

Cabin 2 (A)
Sleeps 2 in lower twin berths
Ensuite shower and toilet
Portholes



Cabin 3 (A)
Sleeps 2 in lower twin berths
Ensuite shower and toilet
Portholes

Cabin 4 (A)
Sleeps 2 in lower twin berths
Ensuite shower and toilet
Portholes



Cabin 5 (A)
Sleeps 2 in lower twin berths
Ensuite shower and toilet
Portholes

Cabin 6 (B)
Sleeps 2 in bunk beds
Ensuite shower and toilet
Portholes



MV Magellan Explorer.

Cruises
Photo Tours

With a Polar Class 6 ice-class (Lloyd's Register PC6), the Magellan Explorer is the world's first expedition ship custom designed for Antarctic air-cruise operations.

The ship serves as a sophisticated and stylish base for her 73 guests' travels, blending expedition expertise with boutique hospitality. The Magellan Explorer has been built from the ground up to be the best platform for air-cruise operations. Several international polar expedition experts contributed to the ship's design in order to improve visitors' expedition experiences. The ship is developed to the most recent Polar Code criteria, with an ice class of Polar Class 6 (Lloyd's Register PC6). The ship has stabilizers, bow and stern thrusters, and ice-detecting radar for safe and comfortable navigation. The Magellan Explorer is incredibly stable, even in a heavy motion sea. To decrease its environmental impact, the ship is outfitted with an energy-recovery technology that recycles engine heat to warm up the ship and its water supply.

[View Deck Plan >](#)



Triple Suite with window - Type A

2 twin beds and 1 queen-size bed
(max. occupancy 3 people)

Located on Deck 4

44 m²

A separate living area with sofa and coffee table, desks and chair sets in both living and bedroom areas, two armchairs with side tables, two private balconies with sitting areas, two larger private bathrooms with separate shower, premium bathroom amenities, bathrobes and slippers.



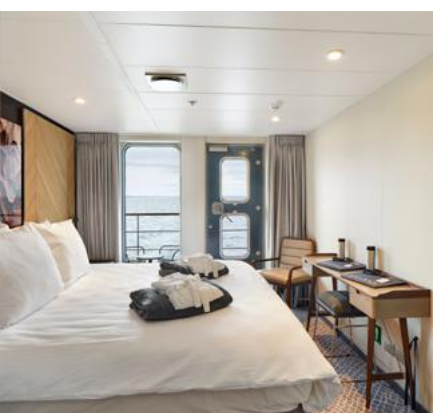
Porthole Cabin - Type B

2 twin beds or 1 king-size bed

Located on Deck 3

18 m²

Desk and chair, two armchair with side table, a safe, telephone, hairdryer private bathroom with separate shower, bathroom amenities, bathrobes and slippers.



Veranda Cabin with window - Type C

2 twin beds or 1 king-size bed

Located on Deck 3

19 m²

Desk and chair, one armchair with side table and private balcony with sitting area, a safe, telephone, hairdryer private bathroom with separate shower, bathroom amenities, bathrobes and slippers.

Also available as Single Veranda Cabin with window - Type G



Deluxe Veranda Cabin with window - Type D

2 twin beds or 1 king-size bed
Located on Deck 4

22 m²

Desk and chair, one armchair with side table and private balcony with sitting area, a safe, telephone, hairdryer, selection of snacks restocked daily, mini-bar restocked daily, coffee maker, a large private bathroom with separate shower, premium bathroom amenities, bathrobes and slippers.

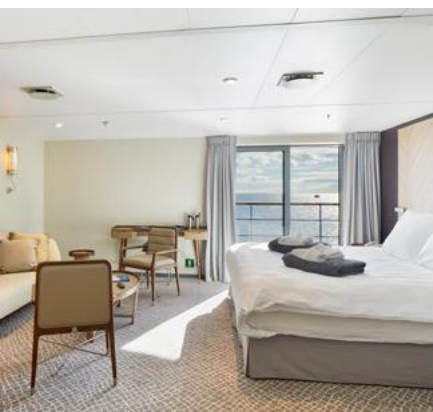


Suite with window - Type E

2 twin beds or 1 king-size bed
Located on Deck 4

44 m²

Queen-size sofa bed, coffee table, desk and chair sets in both living and bedroom areas, two armchairs with side tables, two private balconies with sitting areas, a safe, telephone, hairdryer, selection of snacks restocked daily, mini-bar restocked daily, coffee maker two larger private bathrooms with separate shower, premium bathroom amenities, bathrobes and slippers.



Suite with window - Type F

2 twin beds or 1 king-size bed

Located on Deck 5

33 m²

Separate sitting area with sofa and coffee table, desk and chair, two armchairs and a private balcony with sitting area, a safe, telephone, hairdryer, selection of snacks restocked daily, mini-bar restocked daily, coffee maker a large private bathroom with separate shower, premium bathroom amenities, bathrobes and slippers.



MV Polar Pioneer.

Cruises
Photo Tours

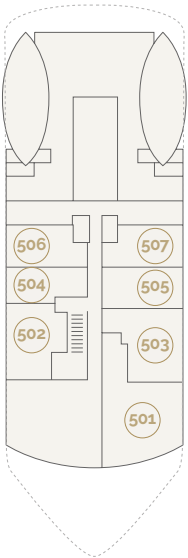


Polar Pioneer is a legendary expedition vessel loved by expedition leaders and guests because she was built for the polar regions and has great success navigating through the ice at the highest ice class, 1A Super.

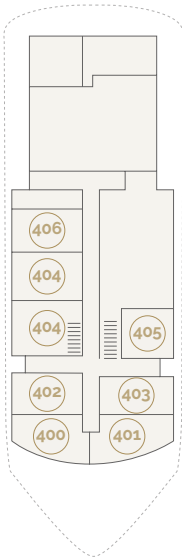
She returns in 2022 with an extensive refit of different-sized cabins equipped for 48 total adventurers, lots of deck space with raised areas for photography, a large passenger saloon with bar, and an onboard sauna to warm up in after a chilly day!

She is large enough to offer a high level of comfort on longer sea passages but is small enough to access places most ships can't go so you can see rare fauna up close and personal. She has large decks for photography, a well-proportioned saloon and bar area to relax in after an active day of adventure, and is equipped with 6 zodiac landing craft for shore landings.

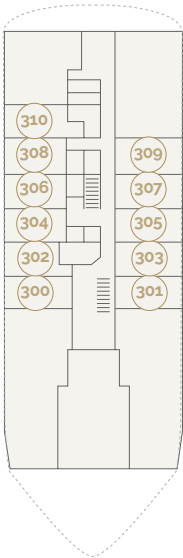
Cabin options include triples, twins and suites with the option of shared or en suite bathrooms. All cabins are in the process of being refurbished to a high standard for 2022.



DECK 5



DECK 4



DECK 3



Captain's Suite (A)
Cabin 501

Double bed and separate lounge area, writing desk, wardrobe and drawers. Private bathroom, hairdryer. Forward and port windows. 22.5 m²

Mini-Suite (B)
Cabins 502 & 503

Double bed and separate lounge area, writing desk, wardrobe and drawers. Private bathroom, hairdryer. Window. 16.8 m²



Twin Cabin w/ Private Facilities (C)
Cabins 504 - 507

400 - 401 & 404 - 408
Two lower berths, writing desk, wardrobe and drawers. Private bathroom, hairdryer. Window, private bathroom. 9.8 m²

Twin Cabin w/ Shared Facilities (D)
Cabins 302 - 310

Two lower single beds, porthole, sink and a shared wc and shower located on the same deck. 9.8 m²



Triple Cabin w/ Shared Facilities (E)
Cabins 300 - 301

Bunk bed and additional lower berth, writing desk, wardrobe, and drawers. Private sink. Shower and toilet facilities are shared with other main deck cabins. This cabin has a porthole. 10.2 m²



Wildlife Viewing & Safety.

One of the main reasons to visit the Arctic is to witness wildlife, which is why we run small tour groups minimizing the disturbance of marvellous habitats. We strictly adhere to rules laid out by AECO and the WWF when it comes to wildlife viewing to ensure our tours cause minimal disturbance and impact. During shore landings, you will be accompanied by an experienced expedition leader trained to keep you safe, however, the following tips are helpful to keep in mind.

TIPS FOR OUR EXPLORERS: If you are a photographer, a long lens is essential as we are limited in how close we can get to animals without disturbing them. If we see evidence of a polar bear in the vicinity, we will not go ashore. For your safety, all guests must remain with the guide at all times and follow their instructions during shore landings.

Sustainable Travel.

The Arctic is a fragile environment and it is warming faster than anywhere else on Earth. As an ethical tour operator, we are conscious that we must do whatever it takes to protect the Arctic, so that is why we actively work to offset all our emissions by supporting tree-planting in Greenland. We encourage our explorers to do the same, as we aim for carbon neutrality.

During our tours, we additionally:

- Collect any litter we find on remote beaches.
- Educate explorers on the fragility of the environment.
- Educate explorers on what they can do to help protect the environment.

Weather Conditions.

The weather conditions in the polar regions vary year-round, with daily summer temperatures just over the freezing mark. The 24-hour sunlight in Svalbard can feel warm in the summer, and it is sometimes possible to hike wearing just a t-shirt. However, you may also encounter subzero weather such as snow squalls, fog, and white-outs during your expedition no matter the time of year. We will provide you with a comprehensive packing list ahead of your trip to ensure you are prepared for all conditions.

A flexible approach.

One of the most exciting aspects of an Expedition is that no voyage is ever the same due to variable weather conditions, the sea ice, and you!

We take a flexible approach to exploring, which will make your journey a true adventure. Your expedition leader and captain will work tirelessly with the weather conditions to ensure you get the most out of your trip, and that the voyage is shaped to your needs and interests. Our itineraries are an example of what you'll experience on an adventure. As with all polar exploration, flexibility is the key to having the adventure of your lifetime!

Health and Safety Regulations.

The health, safety, and wellbeing of our guests have been our number one priority since the days of our very first expedition. As we face new global

health challenges we are constantly updating our procedures to ensure our trips are as safe as ever. You must be of sound health, and possess a basic level of fitness and mobility in order to join us on a Secret Atlas trip.

Before you embark on the vessel, your cabin and common areas will be cleaned to a high standard. Throughout your voyage the vessel will be kept clean and hygienic with advanced cleaning, disinfecting, and sanitizing procedures followed at all times. We have a comprehensive health and safety procedure in place in case of a medical emergency on board. This will be reviewed and kept in line with AECO guidelines.

We aim to be as inclusive as possible. With two guides on every trip, we can split the group to accommodate different fitness levels. Please disclose confidentially any medical conditions to us prior to departure, especially those that you feel could affect your ability to participate. Please also inform us of any allergies or dietary requirements when booking.

If you are taking medication, you are responsible for providing enough to cover your time onboard, plus extra for any unexpected delays such as cancelled flights or inclement weather that could affect your travels.

If you have any questions, please don't hesitate to get in touch to determine if this trip is suitable for you.

Independent Travellers.

Independent travellers are welcomed on all our voyages, particularly on our Photo Expeditions; chances are, you won't be the only one. You will come with friends on your adventure by reaching out to your fellow explorers in our Facebook group.

We offer the following accommodation options for independent travellers.

Your own single ensuite cabin with no single supplement on expeditions on MV Vikingfjord.

On polar Pioneer and Kinfish we offer the option to share a twin cabin with another traveller of the same gender or your own cabin with an additional supplement.

Please contact us for this option as the price varies depending on trip and availability.

Groups of 4+ Travellers.

Are you a group of 4 or more travellers? On select departures, and subject to availability, we offer a group discount.

What's Included.

Before your adventure begins.

- Comprehensive joining instructions, with a complete packing list.
- Local assistance in planning your pre and post-adventure activities and accommodation.
- Transfers between your hotel and ship on arrival (select adventures).
- Connect with like-minded travellers on your adventure before setting out in our Facebook group.

What you'll taste on your adventure.

During your voyage, we offer a freshly made breakfast, lunch, and dinner prepared by our onboard chef along with soft drinks, tea, and coffee.

- A complimentary alcoholic beverage (such as Mine 3 Beer from the world's most northernmost brewery) is included with dinner on some adventures, with additional drinks available for purchase.
 - On the day of embarkation, an evening meal is included and on the day of disembarkation, breakfast is provided.
 - The chef will serve a variety of hearty dishes offering you the chance to experience the unique regional cuisine using locally sourced produce.
- If you have any dietary requirements, food allergies or intolerances, or would like a vegetarian option, please let us know at the time of booking.

What you'll access on your adventure

- Rubber boots for shore landings and hiking (select adventures)
- Services of an expedition leader and guide (customary tips not included)
- Shore landings by Zodiac landing craft as detailed in the itinerary
- Accommodation in warm, comfortable cabins

with all bedding and towels provided.

- Education on reducing your carbon footprint

After your adventure ends

- Further guidance with your carbon drawdown
- Transfers between your hotel and ship on arrival and departure (select adventures)

Communication.

Once you leave port, mobile phone and wi-fi signal ends and the peace and tranquillity begins. Part of the Arctic experience is taking time away from your everyday life to experience the raw beauty of the Arctic landscape.

There is no internet on board, giving you the rare chance to disconnect from the world you normally live in and connect with nature. Rest assured, all our boats are equipped with satellite communication devices in case of emergency.

Travel Insurance.

Travel insurance providing cover for emergency repatriation in the case of a medical emergency is compulsory for all trips sold or operated by Secret Atlas, and is a condition of booking. We will ask for a copy of your insurance certificate prior to departure.

We recommend that you take out cancellation insurance that covers you in the event you have to cancel your trip due to illness or injury.

If you can't enter the departure country due to covid travel restrictions we will offer you a free rebooking on a future departure.

Our destinations are remote, so we advise seeking expert advice from a travel insurance company to ensure you have sufficient levels of cover in place for your destination and planned activities.

In the unlikely event that we have to cancel a trip, you will be issued a full refund for the cost of the trip only. Flights and hotels you have booked yourself, and any other expenses incurred, will not be covered and we encourage you to check that you are fully insured for this unlikely possibility.

It is mandatory that your insurance covers flights and hotels in case the vessel is delayed or the trip is cancelled. Please ensure your policy covers the following:

- Medical expenses.
- Repatriation (this includes the right to flights organized by airlines to bring home citizens who get stuck abroad for various reasons like COVID-19 travel restrictions).
- Emergency evacuation and search and rescue.
- Evacuation (including by helicopter) to the nearest hospital for accident, injury & other medical reasons.
- Cancellation and curtailment.
- Personal liability.
- Loss of luggage and personal effects.
- Death and illness.

While we cannot legally advise you on travel insurance, we are more than happy to point you in the right direction. Please contact us for more information.

We highly recommend taking out a policy with global rescue globalrescue.com on top of your travel

insurance. They provide an additional level of medical cover, evacuation and field rescue when visiting remote polar regions.

Payment Options.

Our explorers may choose to pay for their adventure with either a credit card or with a bank transfer; simply let us know which you prefer at the time of booking.

You have the option to pay in full at time of booking or pay in the following instalments:

30% deposit is taken at the time of booking

30% 6 months before departure

40% 90 days prior to departure

It is mandatory you take out comprehensive travel insurance at the time of booking that also covers cancellation.

Bookings and Enquiries.

For bookings and enquiries please reach out to our knowledgeable team to help you plan your trip.

Dates and Rates

Svalbard

Greenland

Antarctica

South Georgia

Svalbard Dates and Rates

20242025

€£

Date	Trip Name	Duration	Vessel	Cabin A	Cabin B	Cabin C	Cabin D	
16th - 24th April 2024	Svalbard Photo Tour	9 Days	MV Vikingfjord	€ 11,900	€ 11,900	€ 11,900	n/a	Book
24th April - 2nd May 2024	Svalbard Photo Tour w/	9 Days	MV Vikingfjord	€ 11,900	€ 11,900	€ 11,900	n/a	Book

2nd - 10th May 2024	Svalbard Photo Tour w/ Chase & Jenni Teron	9 Days	MV Vikingfjord	€ 11,900	€ 11,900	€ 11,900	n/a	Book
10th - 18th May 2024	Svalbard Photo Tour w/ Florian Ledoux	9 Days	MV Vikingfjord	€ 11,900	€ 11,900	€ 11,900	n/a	Book
18th - 26th May 2024	Svalbard Photo Tour w/ Florian Ledoux	9 Days	MV Vikingfjord	€ 11,900	€ 11,900	€ 11,900	n/a	Book
26th May - 3rd June 2024	Natural Wonders	9 Days	MV Vikingfjord	€ 11,500	€ 11,500	€ 11,500	n/a	Book
3rd - 12th June 2024	Svalbard Photo Tour w/ Paul Goldstein	10 Days	MV Vikingfjord	€13,350	€13,350	€13,350	n/a	Book
12th - 21st June 2024	Svalbard Photo Tour w/ Paul Goldstein	10 Days	MV Vikingfjord	€13,350	€13,350	€13,350	n/a	Book
21st - 30th June 2024	Natural Wonders	10 Days	MV Vikingfjord	€ 12,900	€ 12,900	€ 12,900	n/a	Book
30th June - 8th July 2024	Natural Wonders	9 Days	MV Vikingfjord	€ 11,500	€ 11,500	€ 11,500	n/a	Book
8th - 17th July 2024	Natural Wonders	10 Days	MV Vikingfjord	€ 12,900	€ 12,900	€ 12,900	n/a	Book
17th - 26th July 2024	Natural Wonders	10 Days	MV Vikingfjord	€ 12,900	€ 12,900	€ 12,900	n/a	Book

2024

9th - 18th August 2024	Natural Wonders	10 Days	MV Kinfish	€ 10,900	€ 10,200	n/a	n/a	Book
18th - 27th August 2024	Natural Wonders	10 Days	MV Kinfish	€ 10,900	€ 10,200	n/a	n/a	Book
27th August - 5th September 2024	Natural Wonders	10 Days	MV Kinfish	€ 10,900	€ 10,200	n/a	n/a	Book
5th - 14th September 2024	Svalbard Ice Waterfalls Photo Tour	10 Days	MV Kinfish	€ 11,500	€ 10,800	n/a	n/a	Book

Prices per person for F.I.T.

Please [get in touch](#) for private charter pricing and availability.

Greenland Dates and Rates

2024 2025

€ £

Date	Trip Name	Duration	Vessel	Cabin A	Cabin B	Cabin C	
15th - 22nd August 2024	East Greenland Explorer	8 Days	MV Vikingfjord	€ 9,900	€ 9,900	€ 9,900	Book

2024	Explorer		Vikingfjord				
29th August - 5th September 2024	East Greenland Explorer	8 Days	MV Vikingfjord	€ 9,900	€ 9,900	€ 9,900	Book
5th - 12th September 2024	East Greenland Explorer	8 Days	MV Vikingfjord	€ 9,900	€ 9,900	€ 9,900	Book
12th - 19th September 2024	East Greenland Explorer	8 Days	MV Vikingfjord	€ 9,900	€ 9,900	€ 9,900	Book
19th - 26th September 2024	East Greenland Northern Lights Photo Tour W/ Virgil Regioni	8 Days	MV Vikingfjord	€ 9,900	€ 9,900	€ 9,900	Book
26th September - 3rd October 2024	East Greenland Explorer	8 Days	MV Vikingfjord	€ 9,900	€ 9,900	€ 9,900	Book

The above quoted prices do not include a mandatory hotel and flight package which costs an additional €2,500 per person.

Mandatory Hotel And Flight Package

Scoresby Sund is a very remote area on the coast of East Greenland. Due to the often rough seas between Iceland and Scoresby Sund and the time it takes to cross, we want to offer you the most comfortable experience and will arrange a charter flight and hotel package on your behalf.

This Package includes:

- 1 pre-voyage night in a hotel at Keflavik (Marriott KEF or equivalent) - this will be our meeting point.
- Exclusive Secret Atlas charter flight Keflavik-Constable Point (Nerlerit Innat - Scoresbysund, CNP)
- Exclusive Secret Atlas transfers to flight in-out
- 1 post-voyage night in a hotel at Keflavik (Marriott KEF or equivalent)

This package will allow us to provide you with the best possible experience. The hotels before and after the expedition allow for any potential flight delays due to weather.

The mandatory package costs an additional €2,500 per person and will be charged separately after you have confirmed your booking.

If you have any questions please don't hesitate to get in touch.

South Georgia Dates and Rates

South Georgia Explorer – Wildlife and Photo Tour – 24th February – 9th March 2024

MV Polar Pioneer – 48 guests only – the smallest group size in Antarctica and South Georgia.

Cabin Type	Persons per Cabin	Price per person	
Triple Cabin with Shared Facilities	3	US\$ 13,995	Book
Twin Cabin with Shared Facilities	2	US\$ 15,795	Book
Twin Cabin with Private Facilities	2	US\$ 16,995	Book
Mini Suite	2	US\$ 17,995	Book

Prices per person for F.I.T.

Please [get in touch](#) for private charter pricing and availability.

Antarctica Dates and Rates

[Antarctica Explorer – Wildlife and Photo Tour](#) – 1st January – 12th January 2024

[MV Polar Pioneer](#) – 48 guests only – the smallest group size in Antarctica and South Georgia.

Cabin Type	Persons per Cabin	Price per person	
Triple Cabin with Shared Facilities	3	US\$ 11,490	Book
Twin Cabin with Shared Facilities	2	US\$ 12,870	Book
Twin Cabin with Private Facilities	2	US\$ 13,790	Book
Mini Suite	2	US\$ 14,790	Book
Captain's Suite	2	US\$ 15,990	Book

Prices per person for F.I.T.

Please [get in touch](#) for private charter pricing and availability.

See All Voyages

Get In Touch

Dates and Rates

Svalbard

Greenland

Antarctica

South Georgia

Svalbard Dates and Rates

2024 2025

€ £

Date	Trip Name	Duration	Vessel	Cabin A	Cabin B	Cabin C	Cabin D	
14th - 21st April 2025	Svalbard Photo Tour	8 Days	MV Vikingfjord	€ 10,500	€ 10,500	€ 10,500	n/a	Book
21st - 28th	Svalbard Photo Tour	8 Days	MV Vikingfjord	€ 10,500	€ 10,500	€ 10,500	n/a	Book

April
2025

28th April - 5th May 2025	Svalbard Photo Tour	8 Days	MV Vikingfjord	€ 10,500	€ 10,500	€ 10,500	n/a	Book
5th - 12th May 2025	Svalbard Photo Tour	8 Days	MV Vikingfjord	€ 10,500	€ 10,500	€ 10,500	n/a	Book
12th - 19th May 2025	Svalbard Encounter	8 Days	MV Vikingfjord	€ 9,950	€ 9,950	€ 9,950	n/a	Book
19th - 26th May 2025	Svalbard Encounter	8 Days	MV Vikingfjord	€ 9,950	€ 9,950	€ 9,950	n/a	Book
26th May - 4th June June 2025	Svalbard Photo Tour	10 Days	MV Vikingfjord	€13,500	€13,500	€13,500	n/a	Book
4th - 13th June 2025	Svalbard Photo Tour	10 Days	MV Vikingfjord	€13,500	€13,500	€13,500	n/a	Book
13th - 20th June 2025	Svalbard Encounter	8 Days	MV Vikingfjord	€9,950	€9,950	€9,950	n/a	Book
20th - 27th June 2025	Svalbard Encounter	8 Days	MV Vikingfjord	€9,950	€9,950	€9,950	n/a	Book
27th June - 6th July 2025	Natural Wonders	10 Days	MV Vikingfjord	€ 12,500	€ 12,500	€ 12,500	n/a	Book
6th - 15th July 2025	Natural Wonders	10 Days	MV Vikingfjord	€ 12,500	€ 12,500	€ 12,500	n/a	Book
15th - 26th July 2025	Svalbard Pioneer	12 Days	MV Vikingfjord	€ 15,500	€ 15,500	€ 15,500	n/a	Book

26th July - 6th August 2025	Svalbard Pioneer	12 Days	MV Vikingfjord	€ 15,500	€ 15,500	€ 15,500	n/a	Book
--------------------------------------	---------------------	---------	-------------------	-------------	-------------	-------------	-----	------

Prices per person for F.I.T.

Please [get in touch](#) for private charter pricing and availability.

Greenland Dates and Rates

2024 2025

€ £

Date	Trip Name	Duration	Vessel	Cabin A	Cabin B	Cabin C	
12th - 19th August 2025	East Greenland Explorer	8 Days	MV Vikingfjord	€ 9,900	€ 9,900	€ 9,900	Book
19th - 26th August 2025	East Greenland Explorer	8 Days	MV Vikingfjord	€ 9,900	€ 9,900	€ 9,900	Book
26th August - 2nd September 2025	East Greenland Explorer	8 Days	MV Vikingfjord	€ 9,900	€ 9,900	€ 9,900	Book
2nd - 9th September 2025	East Greenland Explorer	8 Days	MV Vikingfjord	€ 9,900	€ 9,900	€ 9,900	Book
9th - 16th September 2025	East Greenland Explorer	8 Days	MV Vikingfjord	€ 9,900	€ 9,900	€ 9,900	Book

16th - 23rd September 2025	East Greenland Northern Lights Photo Tour W/ Virgil Reglioni	8 Days	MV Vikingfjord	€ 9,900	€ 9,900	€ 9,900	Book
23rd - 30th September 2025	East Greenland Explorer	8 Days	MV Vikingfjord	€ 9,900	€ 9,900	€ 9,900	Book
30th September - 7th October 2025	East Greenland Explorer	8 Days	MV Vikingfjord	€ 9,900	€ 9,900	€ 9,900	Book

The above quoted prices do not include a mandatory hotel and flight package which costs an additional €2,500 per person.

Mandatory Hotel And Flight Package

Scoresby Sund is a very remote area on the coast of East Greenland. Due to the often rough seas between Iceland and Scoresby Sund and the time it takes to cross, we want to offer you the most comfortable experience and will arrange a charter flight and hotel package on your behalf.

Due to Greenland's ever changing weather and the nature of flying there we provide a hotel either side of the expedition so we can re-group. The exact take off time will be communicated on the evening before departure based on the flying conditions.

This includes:

- 1 pre-voyage night in a hotel at Keflavik (Marriott KEF or equivalent) - this will be our meeting point.
- Exclusive Secret Atlas charter flight Keflavik-Constable Point (Nerlerit Innat - Scoresbysund, CNP)
- Exclusive Secret Atlas transfers to flight in-out
- 1 post-voyage night in a hotel at Keflavik (Marriott KEF or equivalent)

This package will allow us to provide you with the best possible experience. The hotels before and after the expedition allow for any potential flight delays due to weather.

POLAR ADVENTURES

Schiffs- und Flug- Expeditionen
in Arktis und Antarktis

OFFLINE-KATALOG-ANFORDERUNG

Sehr geehrte Reise-Interessenten. Vielen Dank für Ihr Interesse und den Download eines digitalen Kataloges im PDF-Format.

Gerne senden wir Ihnen zusätzlich bei weitergehendem Interesse die ausgewählten PDF-Inhalte als gedruckte Version auf dem Postweg.

Bitte nennen Sie unten den gewünschten Katalog und senden Sie dieses Formular per Post oder Fax an uns zurück.

Bitte senden Sie mir den aktuellen Katalog für folgendes Schiff/ Tour:

--

Bitte senden Sie den ausgewählten Katalog an folgende Adresse:

Vorname + Name

Telefonnummer

--	--

Strasse + Nr.

Faxnummer

--	--

PLZ + Wohnort

e-mail-Adresse

--	--

Bitte per Post an:

oder per Fax an 04131-54255

an POLARADVENTURES Schiffs- und Flug-Expeditionen in Arktis und Antarktis Heinrich-Böll-Str. 40 D-21335 Lüneburg
--

POLAR ADVENTURES

Schiffs- und Flug- Expeditionen in Arktis und Antarktis

**Unverbindliche Buchungsanfrage per Fax an 04131-54255 oder per Post an
Polaradventures, Heinrich-Böll-Str. 40, D-21335 Lüneburg, Deutschland**

Bitte unterbreiten Sie mir ein unverbindliches Angebot für folgende Leistungen:

- ☐ Veranstalter-Angebot mit Insolvenzversicherung nach deutschem Reiseveranstalterrecht + Preis in EUR
☐ Direkt-Angebot der ausländischen Reedereien (ausländ. Reiserecht + Preis in USD zum Tageskurs in EUR)

Schiffsname	
Reisenname/ -Route	
Abfahrt von - bis (tt/mm - tt/mm/jj)	
Alternative Abfahrt (tt/mm - tt/mm/jj) (falls ausgebucht)	
Kabinenkategorie	
Alternative Kabinenkategorie (falls ausgebucht)	

- ☐ Doppelkabine ☐ Doppelkabine zur Einzelnutzung ☐ Halbe Doppelkabine zur Mitbenutzung

Zubringerflüge:

Abflughafen	
Hinflugdatum (tt/mm/jj)	
Rückflugdatum (tt/mm/jj)	
bevorzugte Airline	

- ☐ Economy-Class ☐ Business-Class

Zusätzliche Hotelübernachtungen:

Hotelname/Übernachtungsort	
Aufenthalt von - bis (tt/mm - tt/mm/jj)	
Hotelname/Übernachtungsort	
Aufenthalt von - bis (tt/mm - tt/mm/jj)	

Reiseversicherungen:

- ☐ keine
☐ Reiserücktrittskostenversicherung
☐ Komplettschutz (Reiserücktritts-, Kranken-, Unfall-, Gepäck- und Notfallversicherung)

Persönliche Angaben:

1. Reiseteilnehmer Vorname, Name / Geburtsdatum	
2. Reiseteilnehmer Vorname, Name / Geburtsdatum	

Angebot bitte:

<input type="checkbox"/> per Email an (Emailadresse)	
<input type="checkbox"/> per Fax an (Nummer)	
<input type="checkbox"/> per Post an (Vorname & Name) (Straße & Nr.) (PLZ & Wohnort)	