

# **POLAR ADVENTURES**

Schiffs- und Flug- Expeditionen  
in Arktis und Antarktis



## **Arktis**

### **NARWAL- Beobachtung im Eclipse-Sound (Baffin Island)**

**POLARADVENTURES** Schiffs- und Flug-Expeditionen in Arktis und Antarktis

Heinrich-Böll-Str. 40 \* D-21335 Lüneburg \* Deutschland

Tel +49-4131- 223474 Fax +49-4131-54255 [infos@polaradventures.de](mailto:infos@polaradventures.de) [www.polaradventures.de](http://www.polaradventures.de)

NARWHAL & POLAR BEAR

# A FLOE EDGE SAFARI

---



**ARCTIC KINGDOM**





## AN EXPERIENCE YOU'LL NEVER FORGET

Journey to one of the most remarkable locations on Earth to experience the annual narwhal migration into the Canadian Arctic.

Travel over the Arctic Cordillera Range and arrive in the stunning hamlet of Pond Inlet, Nunavut. This community at the northern end of Baffin Island is the gateway to Eclipse Sound's renowned floe edge.

Wake up in your heated Arctic tent to views of Sirmilik National Park's mountain peaks and glaciers. After a delicious breakfast, travel to your floe edge location on traditional Inuit qamutik sleds that offer fantastic landscape photo opportunities through the longer days of the Midnight Sun.

Once you're at the floe edge, weather and conditions permitted, you will spend the day enjoying wildlife viewing opportunities as narwhal migrate past or socialize in pods. Belugas are known to show up and are such social whales and make terrific photos. You'll also have the chance to explore the land in your qamutiks looking for polar bear sightings to snap great photos of the Arctic's most iconic animal. Watch as migrating birds return to the Arctic to prepare for nesting.

### Highlights

- Experience the floe edge – also known as the “line of life.”
- If mother nature cooperates, observe the iconic tusked narwhal as they swim and feed near the floe edge
- Possible viewing opportunities for polar bears, bearded seals,





ringed seals, walrus, bowhead whales, and beluga

- We may visit Bylot Island, a migratory bird sanctuary, which attracts more than 200,000 birds annually\*\*
- Snorkel and kayak while being surrounded by sea ice~
- Experience the 24-hour daylight of the Midnight Sun in the early Arctic summer
- Take in stunning panoramic views of cliffs and glaciers
- Enjoy hot, gourmet meals at our Tented Safari Camp
- Enjoy tea made of melt-water from hundreds of years old icebergs
- You may also have a chance to visit evocative ancient Thule sites, where you will see the traditional tent rings and learn about the culture and history of the ancestors of Inuit
- Transfers to camp can offer an opportunity to take in the breathtaking views which is an epic experience onto itself

\*\* For best birding opportunities, consider earlier departures

\* Please note that we may encounter Inuit hunters on this safari

~ Certain activities are offered only when conditions permit

## ITINERARY

This Floe Edge Safari is the perfect adventure for first time visitors to the Arctic as well as seasoned Arctic travellers. It is suitable for adults, families, and amateur or professional naturalists and photographers. This Arctic tour offers an excellent chance for viewing and photographing Arctic wildlife, including narwhal, polar bears, seals and a variety of bird species, as well as spectacular landscapes.

The vast expanses, seemingly-endless skies, and tranquility of the Arctic allows for a serene and unhurried experience of the Arctic. Relax with the freedom to linger, watch and photograph the magnificent Arctic scenes around you or simply discover the





beauty and wonder of the Arctic's floe edge.

**Our guests who have the most successful experiences in the north are those who have the spirit of adventure and flexibility within them. The floe edge is a dynamic place, especially during the spring. Weather will be the ultimate determiner of what we can do each day.**

## DAY 1 | JOURNEY TO THE HIGH ARCTIC

Upon landing in Pond Inlet, you will be welcomed by your Expedition Leader and transferred to a local hotel, where you will enjoy a hot dinner and trip briefing. Overnight in hotel.

MEALS INCLUDED: Breakfast and snack (in-flight), Dinner

## DAY 2 | FIRST DAY ON THE SEA ICE

After breakfast, participate in an orientation from Parks Canada then meet your guides on the beach in preparation for your departure to our camp on Eclipse Sound. Travelling to our Arctic Safari Camp by qamutik (a traditional Inuit wooden sled with suspension or foam padded seats pulled behind a snowmobile), you will experience the exhilaration of gliding across the ice. The journey's time will vary depending on ice conditions but will include tea and coffee stops. Depending on ice and snow conditions, we aim to set our camp up a few km from the floe edge. Travel time will vary.

MEALS INCLUDED: Breakfast, Lunch, Dinner

**\*NOTE: Please prepare and hold onto a day pack with warm clothes for travelling to the Arctic Safari Camp because luggage will be inaccessible until arriving at the Camp.**





## DAYS 3-6 | ADVENTURES AROUND THE FLOE EDGE

During the next few days, our excursions will include trips out to the floe edge to look for wildlife. Enjoy the mild spring weather and engage in a variety of activities at the floe edge. Snorkel and kayak amongst sea ice when conditions permit.

One of the greatest highlights for many guests on this safari is the opportunity to observe a variety of Arctic wildlife in their natural habitat. Migratory birds are also in abundance, and with the stillness of the Arctic, you are able to hear the songs of the birds before you even see them. Ice conditions permitting, you may also visit the Bylot Island Migratory Bird Sanctuary, where more than 200,000 birds choose to nest each year. For birders, the earlier departures are best for this activity.

MEALS INCLUDED: Breakfast, Lunch, Dinner

## DAY 7 | LAST DAY ON THE SEA ICE

After breakfast, depart camp by qamutik and snowmobile to Pond Inlet. Enjoy your final night in Pond Inlet with a special Inuit cultural presentation. Overnight in hotel.

MEALS INCLUDED: Breakfast, Lunch, Dinner

## DAY 8 | RETURN HOME

Depart for Ottawa with the spirit of the Arctic, and a full album of memories and friendships.

MEALS INCLUDED: Breakfast, Lunch (in-flight)





## TRIP DETAIL

**LENGTH:** 8 Days / 7 Nights

**DATES:** May & June departures. See all dates

**SINGLE SUPPLEMENT\*:** 180% (of trip portion only)

\*Supplement waived if you request to share with another solo traveller of the same gender (based on space available)

**BOOKING TERMS:** CAD \$2,500 deposit per person required at time of booking. Full payment due 120 days prior to departure date.

**INSURANCE:** Due to the nature and remoteness of this trip; trip cancellation/interruption insurance is strongly recommended. To join this expedition you must obtain emergency evacuation insurance. Learn more at: <https://ss.globalrescue.com/partner/arctickingdom>

**CANCELLATION TERMS:** All requests for cancellations must be received in writing. Cancellations received up to 180 days prior to departure are refunded less an administrative fee of CAD \$1,000 per person. If cancellation is received between 179 and 120 days prior to departure, the deposit is forfeited. For cancellations received between 119 days and the departure date, all payments are forfeited.

**Full Terms & Conditions:** [please request](#)

**LOCATION:** Eclipse Sound, Pond Inlet, Nunavut

**GROUP SIZE:** 16

**CAMP CAPACITY:** 16





## DISCOVER CANADA'S HIGH ARCTIC

### POND INLET, NU

Just south of the Northwest Passage, you will find the beautiful hamlet of Pond Inlet, also called Mittimatalik in Inuktitut means “where Mittima is buried.” Mittima was an ancient person though to be buried here. The name Mittimatalik also refers to “the landing-place,” which is a rock that seagulls would rest on and fish from, demonstrating the amount of wildlife here with an interesting history.

Nestled into the Arctic Cordillera Range, this community is surrounded by scenic fiords and glaciers facing out to Bylot Island, a giant migratory bird sanctuary that welcomes thousands of returning birds each spring.

Eclipse Sound is the body of water separating Bylot Island from Baffin Island. This waterway will freeze through winter, and at the eastern edge, where the frozen channel turns into the expansive Baffin Bay, the sea-ice turns into open water that Arctic whales migrate past looking for openings in the channel to enter. What this means is that elusive Arctic whales swim right past the floe edge offering unmatched photography opportunities.





## ACCOMMODATIONS

### TENTED SAFARI CAMP

While it may appear like a basic tented camp from the outside, our Tented Safari Camp continually surprises and exceeds our guest's expectations with its roomy and warm interior. The sleep tents are large and spacious with a large entrance vestibule, ample standing room and space for all your camera gear and luggage.

The 'Tented Safari Camp' will be set on the sea ice. This allows for an authentic Arctic experience in this remote location, which provides the best opportunity for rare polar bear sightings.

The sleep tents feature steep sidewalls, 14 m<sup>2</sup> (152 ft<sup>2</sup>) of livable space and a ceiling height of more than 2 m (7'2"). There is more than enough room to ensure two guests and all their gear stays warm and dry. The large entrance vestibule creates an additional 46 square feet of storage space. All sleep tents contain two twin metal frame beds with mattresses, duvets, comforters and full-size pillows.

The insulated double walls of the tent act as a greenhouse, keeping you warm on the coldest nights. A heater is also provided to ensure you have warm, comfortable accommodation.

### SAFARI CAMP FEATURES

#### DINING TENT

We also strive to exceed your expectation with a diverse menu of delicious food. You will enjoy meals, snacks and desserts prepared by our executive chef in the central dining tent. This heated, open area tent has a family-style dining table and breakfast bar with fresh coffee and hot tea.





## BATHROOM FACILITIES

Bathrooms are shared. The heated bathroom tent includes waterless toilets and on-demand hot water sinks and showers. All bathroom toiletries such as soap, shampoo and hand cream are provided.

Each tent will also have its own small pop-up tent with a camp toilet for personal use.

## ELECTRONICS

Your camp is powered by generators that will allow you to charge your electronics before bed. Generators are turned off late at night and will be turned on again early the next morning. There is ample time to charge any electronics.

## TRIP NOTES

The intent of our Floe Edge Safari is to introduce you to the Arctic as spring transitions into summer and wildlife is more abundant. While we cannot guarantee sightings of specific Arctic animals, you can expect to find an array of natural wonders and a truly unique experience on this remarkable Arctic adventure.

This Arctic safari intends to provide you with opportunities to observe and photograph a variety of animals, and incredible icescapes and landscapes. You will also be exposed to the intriguing Inuit culture, with an opportunity to learn about some of the ancient settlements and ancestral people that inhabited the area. The Arctic has many variables that can influence travel plans, so being relaxed, patient and flexible are important attitudes. Itineraries are general guidelines and may change due to weather and unexpected conditions.





## GETTING THERE

Travel arrangements between your point of origin and Ottawa (YOW) are the responsibility of the traveller. We strongly recommend that participants travelling on reduced fare airline tickets not try to continue their journey home on the final day of the trip; as any deviation from the ticketed itinerary may result in a penalty regardless of the cause. We highly recommend that you do not plan on having any important meetings or events the day after your trip end date as we recommend planning on 'buffer time' to account for any possible delays in getting home.

## DAYLIGHT HOURS

In mid to late spring (May/June), the sun is constantly shining for 24 hours. The sun shines high above at noon, and by 10 PM it sinks low on the western horizon and continues to skim across the tops of the distant mountain ranges until it reaches the eastern horizon, where it then begins to climb higher into the sky again. The warm, soft glow of the Midnight Sun is a photographer's delight.

## WEATHER

### MAY & JUNE

Temperatures during this season range from -5°C (23°F) to +10°C (50°F). May will normally be the coldest (usually around -5°C), but the temperatures rise as the days lengthen. June typically sees temperatures approximately -1°C (30°F) to +5°C (41°F). Dressing in layers will make adjusting to the temperatures easier.





## IS THIS ADVENTURE FOR YOU?

This safari is perfect for anyone looking for a relaxed adventure. We'll be heading off the beaten track and out of the usual tourist route. You don't need to have previous Arctic experience, but you do need to have an adventurous spirit. Our expeditions are typically represented by an international range of participants. Having a patient, open-minded demeanour is important.

## LEVEL OF DIFFICULTY

Cold Temperatures: 🐻🐻🐻🐻🐻

Daily Time Spent Travelling: 🐻🐻🐻🐻🐻

There are two main factors to consider when deciding on this trip. The cold weather and the amount of time spent travelling.

This trip does take you to a location where you will then spend the day there. You will have a pop-up tent for warming up and seats as you wait for wildlife to appear.

If you think you may have difficulty spending most of the day at a location, we suggest more adventurous trips, like Spring Polar Bears & Glaciers of Baffin Island.

Guests are provided very warm clothes and jackets, but temperature is worth considering when deciding on this trip.

Of course, good health is fundamental to travel in any remote region. All participants will be required to obtain emergency medical and evacuation travel insurance.

Guests can always choose to do as little or as much as he/she would like throughout the adventure.





## SPIRIT OF ADVENTURE REQUIRED

This trip is not intended to have set itineraries or sights to be seen crossed off in a short period of time. We believe in taking things as they come, to relax and enjoy the opportunities, be it a sunny or foggy day, to appreciate where you are in the moment and fall into the lifestyle of the local people.

It is assumed that participants have the spirit within themselves to enjoy the unique solitude of the Arctic and free time provided. If this outlook is not for you, we can assist in finding an alternative Arctic trip that offers a more structured itinerary, an “observer” role versus actively participating in an adventure of discovery. Of course, good health is fundamental to travel in any remote region. All participants will be required to obtain emergency medical and evacuation travel insurance. Age should not be considered a deterrent.

## POLAR CLOTHING PACKAGE

A suggested packing list will be provided upon enrollment confirmation. We recommend that anyone travelling to the Arctic dresses in layers. The insulating outer layer is of particular importance. Regular ski jackets and pants are not suitable for the changing Arctic climate.

We realize that good quality Arctic-worthy equipment is expensive to purchase all at once, and may not be necessary for a one-time Arctic adventure. A top-of-the-line Arctic Polar Clothing Rental Package that will enhance your Arctic experience and allow you to enjoy your expedition in comfort, no matter what Mother Nature brings.

With two decades of experience in all types of Arctic weather, we know what works and what doesn't. All of our staff have depended





on the same clothing package for years of Arctic adventures, so you can rest assured you are getting the best options available.

## GOURMET MEALS

We know that no amazing Arctic experience is complete without delicious food. Our private chef manages the kitchen tent. It will be here that your chef and culinary team will prepare the day's meals, snacks and delicious desserts prepared in camp. The dining/lounge area will have a convenient buffet table where unlimited snacks and hot drinks are provided throughout the day.

The kitchen is not kosher, however, if you have special dietary needs, please advise us at time of booking.

## WHAT TO EXPECT

This Arctic expedition is designed with the intent of viewing animals in their natural habitat. However, there is more to this stunning vista of ice, land, and sea than the wildlife that inhabits it. For centuries, these creatures have shared this wilderness with Inuit people.

We encourage our trip participants to be aware and sensitive to the cultural and historical ways of Inuit, including their traditional hunting lifestyle. You may see evidence of hunting, including animal carcasses, as you wander through the communities. Examples include the stretching of seal skin for the purpose of boots or gloves, and Inuit dog teams being fed Arctic char or seal meat. While on our adventures, we may also come across an Inuit hunting party, sometimes harvesting whales at the floe edge, sometimes travelling to or returning from a hunt.

If you are open to the experience, these sights can provide a window into cultural traditions that stretch back for generations





and exist in harmony with the wild Arctic. As part of the Inuit cultural experience, you may enjoy some local food such as seal, caribou or Arctic char and you may observe how an Inuit hunts the local wildlife. This tradition dates back thousands of years. They will show you how to stalk wildlife for viewing and photography, the same techniques a hunter does.

## WHAT TO EXPECT ON A QAMUTIK RIDE

The mode of transportation to move over the ice is the traditional Inuit sledge pulled by a snowmobile called a qamutik (also spelled qamutiq or komatik). Each of the two to four persons on a qamutik is provided with a suspension or foam padded seat to sit on. We move over sea ice, and even though there have been suspension seats added to the qamutiks for a smoother ride, the later one goes in the season, the bumpier the ride could potentially be. Anyone with a history of back problems should contact your travel agent to see if this trip is for you. problems should contact Arctic Kingdom to see if this trip is for you.

## RELEVANT READING

To help you prepare for your adventure and learn more about the wildlife and regions you will be visiting, we suggest the following reading materials:

- ["The Story Of A Migrating Narwhal"](#), Mat Whitelaw
- ["Narwhal Tusk Facts: Did You Know"](#), Mat Whitelaw
- ["Where To See Narwhal"](#), Mat Whitelaw
- ["3 Incredible Whales To Spot at the Floe Edge"](#), Arctic Kingdom
- ["What Is The Floe Edge"](#), Mat Whitelaw
- ["A Day in the Life at the Floe Edge"](#), Mat Whitelaw





## WHY ARCTIC KINGDOM?

### STAFF RATIO

STAFF 

GUEST 

### MEALS | FOOD RESTRICTIONS

We know that no amazing Arctic experience is complete without delicious food. The chef will prepare the day's meals, snacks and delicious desserts. A hot lunch and beverages are provided at wildlife viewing locations. The heated dining/lounge has a family-style dining table and breakfast bar with fresh coffee and hot tea.

The kitchen is not kosher. If you have special dietary needs, please advise us at time of booking.

Arctic Kingdom is pleased to accommodate most special diets and dietary restrictions. These must be confirmed at time of booking to ensure sufficient time to procure any required items.

### LOCALLY SOURCED FOOD

Arctic Kingdom purchases the maximum amount of food as possible in the communities we operate from to support local economies. Chefs have a natural eye for local garnishes they can forage around the camp like sorrel and mushrooms that may be included in delicious meals.

### REMOTE DESTINATION

You will be above the Arctic Circle and transported to a remote, heated Tented Safari Camp on the ice. This remote location provides a pristine landscape with panoramic views of Canada's Arctic.

Located on the ice near Qikiqtarjuaq. The tented camp is completely self-sufficient and beautifully "off-the-grid."





## FULLY GUIDED TOURS

With a combination of experience and expertise, you get to experience a fully guided safari. With Inuit guides who focus on tracking wildlife, animal monitoring and transportation, and then Expedition Leaders and Camp Managers who focus on your experience.

## SOLO TRAVEL OPTIONS

We welcome solo travellers!

The whole tour is very inclusive and often accommodates solo travellers. Eat meals and travel with fellow like-minded people who are as excited as you are to be at this phenomenal location.



## 20 YEARS IN BUSINESS | ARCTIC PIONEERS | EXPERIENCED POLAR STAFF

Arctic Kingdom is the global leader in land-based travel, custom experiences and getaways in the Canadian Arctic. After 20 years of operating in this remarkable region, Arctic Kingdom has unparalleled expertise in Arctic wildlife and habitats, and unmatched access built through years of experience and relationships with Inuit communities. Based on the skills and knowledge of our expert Inuit guides, Arctic Kingdom has built one of the world's premier small-group polar bear and narwhal safaris in their natural Arctic environment. Arctic Kingdom strives to create journeys that invigorate and inspire guests.







## RESPONSIBLE TOURISM

It is our desire that the Floe Edge Safari contribute to the transformation of the economic base of this region from hunting to one that is focused on tourism. Tourism and film production can be a real boon to local communities, providing income, positive cultural exchanges, and a financial incentive to protect their natural environment.

Arctic Kingdom takes a 'total approach' to responsible tourism. Everything, from the way we plan and operate our trips to the practices of Arctic Kingdom as a company, is geared toward making a positive impact on the regions we visit. Arctic Kingdom trips are designed to allow a high degree of economic benefit to the local communities; we hire local guides and local drivers, buy local produce (whenever possible), eat local food, and use local services to ensure as much money as possible is retained within the local economy and the host communities. We are continually reassessing our trips, always ensuring that they are socially, economically, and environmentally sound.

## FAQ

With over 20 years of Arctic and expedition experience, we at Arctic Kingdom have been asked all kinds of questions. We understand that many of our guests have never partaken in an experience quite like our safaris nor have visited the Arctic before. We want to take this opportunity to make each of our guests feel comfortable and well prepared for their upcoming safari.

We've compiled a list of the top questions paired up with answers based on our knowledge and experience. Visit our FAQ page for all of your questions and answers:





All photos used on social media are real photos taken by guests and expedition leaders. Follow [#Arctickingdom](#) on our platforms to see new photos.

Enjoy our [Youtube page](#) for wildlife videos and webinars, highlighting our variety of safaris throughout the year.





Schiffs- und Flug- Expeditionen  
in Arktis und Antarktis

# Saison 2024 & 25

**Veranstalter Direkt-Angebote**

**ab-bis Zielort für individuelle  
Planungen**

**alle Abfahrten der Saison inkl.  
englischsprachiger Termine**



# Trip Details

2024

▼

2025

▼

**Price**  
**CAD \$27,500\*** (tax included)  
\*per person, based on double occupancy. Flight pricing is subject to change

**Location**  
Eclipse Sound, Pond Inlet, Nunavut

**Travel Package**  
Flights/Transfers\* from Ottawa, ON (YOW) to Pond Inlet, NU (YIO)

**International Gateway**  
Ottawa, ON (YOW)

**Group Size**  
16

**Transportation**  
Snowmobile & Qamutik

**Average Temperature**  
-2°C to +10°C (+28°F to +50°F)

**Daylight**  
24 hours

**Tentative Dates**  
May 13 - May 20, 2024  
(Sold Out - Waitlist Only)

May 21 - May 28, 2024  
(1 Space Left)

May 29 - June 05, 2024  
(1 Space Left)

June 06 - June 13, 2024  
(3 Spaces Left)



# Trip Details

2024 ▼

2025 ▼

## Price

**CAD \$29,970\*** (tax included)  
\*per person, based on double occupancy. Flight pricing is subject to change

## Location

Eclipse Sound, Pond Inlet, Nunavut

## Travel Package

Flights/Transfers\* from Ottawa, ON (YOW) to Pond Inlet, NU (YIO)

## International Gateway

Ottawa, ON (YOW)

## Group Size

16

## Transportation

Snowmobile & Qamutik

## Average Temperature

-2°C to +10°C (+28°F to +50°F)

## Daylight

24 hours

## Tentative Dates

Mid-May

(10 Spaces Available)

Late-May

(13 Spaces Available)

Early-June

(16 Spaces Available)

Mid-June

(16 Spaces Available)





## Spring Polar Clothing Package Guide



## Introduction

This polar clothing package is suggested for Arctic Kingdom trips in the late-spring and early-summer months, including the following:

- Narwhal & Polar Bear Safari
- Baffin Island Dive Safari
- Ultimate Floe Edge Explorer

## Dressing for Arctic Weather & Conditions

Temperatures and weather conditions in polar regions vary widely depending on season and location. It can even change significantly throughout the week or day. In May and June, you may experience temperatures ranging from -12°C (10°F) to 6°C (42°F), with chances of snow and rain. Even as temperatures hover just around the freezing mark, strong winds, either natural or from riding behind a snowmobile, can make temperatures feel much colder (wind chill).

Clothing is key to your comfort in the Arctic. While actual temperatures, weather conditions, and wind chill, differ by season and location, the basics of dressing for cold weather are the same. We recommend dressing in layers, adding or subtracting the layers according to your needs.

There are three essential layers:

1. Base Layer
2. Insulating Mid-Layer
3. Outer Layer

Base layers and insulating layers can be used in almost any type of weather or winter climate. The outer layer will be determined by the type of weather expected on your Arctic expedition.





## Our Spring Polar Clothing Package

Our Spring Polar Clothing Package includes top of the line brands, including Canada Goose and Outdoor Research (OR). With more than a decade of experience in all types of Arctic weather, we know what works and what doesn't. Each item included in our Polar Clothing Package has been personally tried and tested in the extreme climates of the Canadian Arctic.

The Canada Goose Expedition Parka is your first line of defense against cold or unpredictable weather. This insulated parka features a durable, water repellent, Arctic-Tech shell. Paired with waterproof shell pants and insulated rubber boots, you will be ready to face the ever-changing Arctic spring and early-summer weather.

To protect your head and hands, we recommend that you purchase a windproof hat, neck gaiter, liner gloves, and windproof gloves.

### Our Spring Polar Clothing Rental Package includes:

1. Canada Goose Expedition parka
2. Waterproof shell pants (non-insulated)
3. Insulated rubber boots
4. Waterproof insulated mitts
  - Duffle bag for your gear



## Package Pricing

For guests on Arctic Kingdom trips, the price per rental is CAD \$695 plus tax.

For all other remaining gear you may need or prefer to purchase, please visit our custom

[Arctic Kingdom Gear Shop](#)

featuring all the apparel and travel gear you need to get ready for and fully enjoy your Arctic adventure. Your purchases will be expertly handled by our online store partner, **New Headings**.

We have organized the gear you may need into sections to help with your decisions, including any accessories our guests find useful for maximizing their experience. Should you have any questions or if you are unsure of what season your trip falls into, please reach out to your Client Service Representative.

## Sizing Charts

### Men's Parka

	XS	S	M	L	XL	2XL
Chest	86-89cm 34"-35"	91-94cm 36"-37"	97-102cm 38"-40"	104-109cm 41"-43"	112-117cm 44"-46"	119-130cm 47"-51"
Waist	69-71cm 27"-28"	74-76cm 29"-30"	79-84cm 31"-33"	86-91cm 34"-36"	94-99cm 37"-39"	102-112cm 40"-44"
Hips	86-89cm 34"-35"	91-94cm 36"-37"	97-102cm 38"-40"	104-109cm 41"-43"	112-117cm 44"-46"	119-130cm 47"-51"
European Sizing	42	46	48	52	56	60

### Women's Parka

	XS	S	M	L	XL
	2	4-6	8-10	12-14	16-18
Chest	81-84cm 32"-33"	86-89cm 34"-35"	91-94cm 36"-37"	97-102cm 38"-40"	104-109cm 41"-43"
Waist	66-69cm 26"-27"	71-74cm 28"-29"	76-79cm 30"-31"	81-86cm 32"-34"	89-94cm 35"-37"
Hips	91-94cm 36"-37"	97-99cm 38"-39"	102-104cm 40"-41"	107-112cm 42"-44"	114-112cm 45"-47"
European Sizing	36	38	40	42	46



### Men's Waterproof Shell Pants

	XS	S	M	L	XL	2XL
Waist	69cm 27"	76cm 30"	83cm 32.5"	91cm 36"	99cm 39"	109cm 43"
Hips	85cm 33.5"	93cm 36.5"	99cm 39"	107cm 42"	117cm 46"	123cm 48.5"
Inseam	76cm 30"	79cm 31"	81cm 32"	84cm 33"	86cm 34"	89cm 35"

### Women's Waterproof Shell Pants

	XXS	XS	S	M	L	XL
Waist	66cm 26"	69cm 27"	72cm 28.5"	77cm 30.5"	83cm 32.5"	93cm 36.5"
Hips	86cm 34"	89cm 35"	94cm 37"	100cm 39.5"	104cm 41"	113cm 44.5"
Inseam	74cm 29"	75cm 29.5"	76cm 30"	77cm 30.5"	80cm 31.5"	83cm 32.5"

### Insulated Rubber Boots

	5	5.5	6	6.5	7	7.5	8	8.5	9	9.5	10	10.5	11	11.5	12	12.5	13
USA, Men																	
USA, Women	6.5	7	7.5	8	8.5	9	9.5	10	10.5	11	11.5	12	12.5	13	13.5	14	14.5
UK, Men	4.5	5	5.5	6	6.5	7	7.5	8	8.5	9	9.5	10	10.5	11	11.5	12	12.5
UK, Women	4	4.5	5	5.5	6	6.5	7	7.5	8	8.5	9	9.5	10	10.5	11	11.5	12
Europe	37	37.5	38	38.5	39	40	40.5	41	42	42.5	43	44	44.5	45	46	46.5	47
Japan	23	23.5	24	24.5	25	25.5	26	26.5	27	27.5	28	28.5	29	29.5	30	30.5	31

## How to Select the Best Size

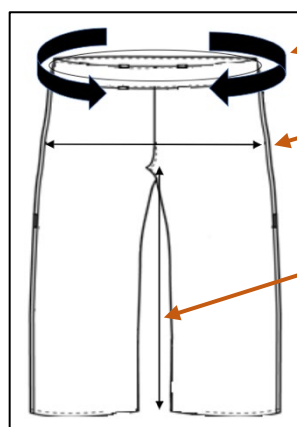
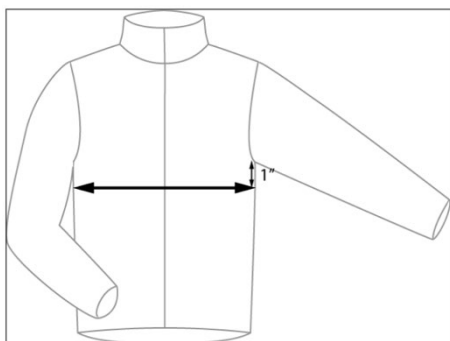
### Chest Size

- Place measuring tape 1" below your arm pit and measure the circumference around your chest

### Waist, Hip, Inseam

Keeping the tape measure a bit loose, measure the following:

- Waist - Measure the circumference around your waist (A)
- Hip - Measure 9" down from top of waist and measure your circumference (B)
- Inseam - Measure from crotch to your ankle (C)



### Boot Size

- All of our boots are sized based on **USA Men's sizing**
- Find your regular shoe size on the sizing chart.
- Determine your equivalent US men's shoe size.
- Your appropriate boot size would be one full US men's size bigger than your US men's shoe size.
  - Example: Your UK Women's shoe size is a 6. According to the size chart, your US men's shoe size is a 7. Therefore, choose a size 8 boot on your order form. (See in blue below)
- Boots are only available in full sizes; no half sizes are available. If your US men's shoe size is a half size, choose the size 1.5 times bigger.
  - Example (Red): Your shoe size is a European 42.5, which equals a US men's size 9.5. Therefore, select a size 11 boot on your order form (See in red below)

USA, Men	5	5.5	6	6.5	7	7.5	8	8.5	9	9.5	10	10.5	11	11.5	12	12.5	13
USA, Women	6.5	7	7.5	8	8.5	9	9.5	10	10.5	11	11.5	12	12.5	13	13.5	14	14.5
UK, Men	4.5	5	5.5	6	6.5	7	7.5	8	8.5	9	9.5	10	10.5	11	11.5	12	12.5
UK, Women	4	4.5	5	5.5	6	6.5	7	7.5	8	8.5	9	9.5	10	10.5	11	11.5	12
Europe	37	37.5	38	38.5	39	40	40.5	41	42	42.5	43	44	44.5	45	46	46.5	47
Japan	23	23.5	24	24.5	25	25.5	26	26.5	27	27.5	28	28.5	29	29.5	30	30.5	31



# POLAR ADVENTURES

Schiffs- und Flug- Expeditionen  
in Arktis und Antarktis

## OFFLINE-KATALOG-ANFORDERUNG

Sehr geehrte Reise-Interessenten. Vielen Dank für Ihr Interesse und den Download eines digitalen Kataloges im PDF-Format.

Gerne senden wir Ihnen zusätzlich bei weitergehendem Interesse die ausgewählten PDF-Inhalte als gedruckte Version auf dem Postweg.

Bitte nennen Sie unten den gewünschten Katalog und senden Sie dieses Formular per Post oder Fax an uns zurück.

Bitte senden Sie mir den aktuellen Katalog für folgendes Schiff/ Tour:

--

Bitte senden Sie den ausgewählten Katalog an folgende Adresse:

Vorname + Name

Telefonnummer

--	--

Strasse + Nr.

Faxnummer

--	--

PLZ + Wohnort

e-mail-Adresse

--	--

Bitte per Post an:

oder per Fax an 04131-54255

an POLARADVENTURES Schiffs- und Flug-Expeditionen in Arktis und Antarktis Heinrich-Böll-Str. 40 D-21335 Lüneburg
--

# POLAR ADVENTURES

## Schiffs- und Flug- Expeditionen in Arktis und Antarktis

**Unverbindliche Buchungsanfrage per Fax an 04131-54255 oder per Post an  
Polaradventures, Heinrich-Böll-Str. 40, D-21335 Lüneburg, Deutschland**

Bitte unterbreiten Sie mir ein unverbindliches Angebot für folgende Leistungen:

- ☐ Veranstalter-Angebot mit Insolvenzversicherung nach deutschem Reiseveranstalterrecht + Preis in EUR  
☐ Direkt-Angebot der ausländischen Reedereien (ausländ. Reiserecht + Preis in USD zum Tageskurs in EUR)

Schiffsname		
Reisenname/ -Route		
Abfahrt von - bis (tt/mm - tt/mm/jj)		
Alternative Abfahrt (tt/mm - tt/mm/jj) (falls ausgebucht)		
Kabinenkategorie		
Alternative Kabinenkategorie (falls ausgebucht)		

- ☐ Doppelkabine ☐ Doppelkabine zur Einzelnutzung ☐ Halbe Doppelkabine zur Mitbenutzung

Zubringerflüge:

Abflughafen		
Hinflugdatum (tt/mm/jj)		
Rückflugdatum (tt/mm/jj)		
bevorzugte Airline		

☐ Economy-Class ☐ Business-Class

Zusätzliche Hotelübernachtungen:

Hotelname/Übernachtungsort		
Aufenthalt von - bis (tt/mm - tt/mm/jj)		
Hotelname/Übernachtungsort		
Aufenthalt von - bis (tt/mm - tt/mm/jj)		

Reiseversicherungen:

- ☐ keine  
☐ Reiserücktrittskostenversicherung  
☐ Komplettschutz (Reiserücktritts-, Kranken-, Unfall-, Gepäck- und Notfallversicherung)

Persönliche Angaben:

1. Reiseteilnehmer Vorname, Name / Geburtsdatum		
2. Reiseteilnehmer Vorname, Name / Geburtsdatum		

Angebot bitte:

<input type="checkbox"/> per Email an (Emailadresse)		
<input type="checkbox"/> per Fax an (Nummer)		
<input type="checkbox"/> per Post an (Vorname & Name) (Straße & Nr.) (PLZ & Wohnort)		