

POLAR ADVENTURES

Schiffs- und Flug- Expeditionen
in Arktis und Antarktis



Arktis Expeditions-Seereisen

SV HILDUR SV OPAL

SV TALVERA

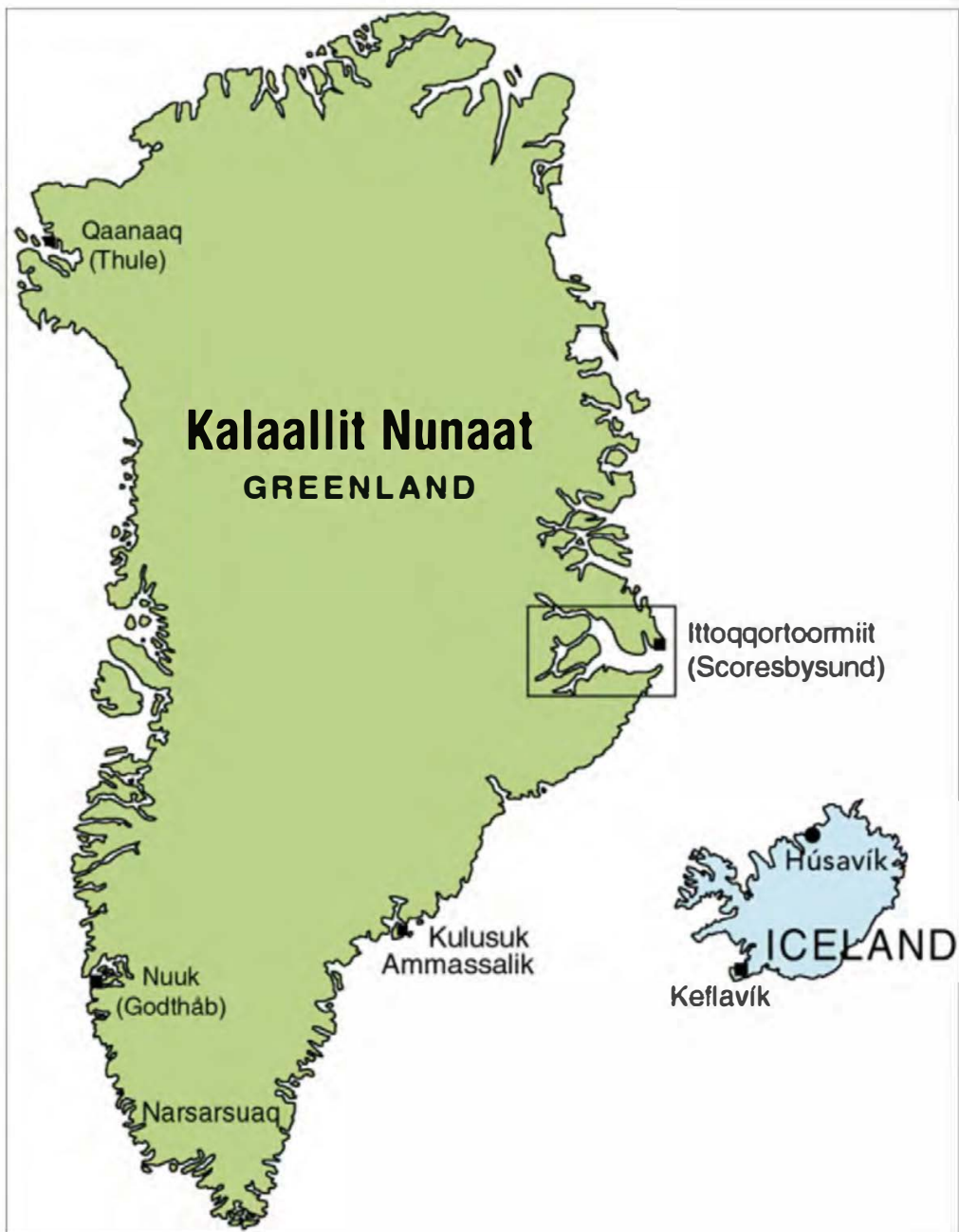
POLARADVENTURES Schiffs- und Flug-Expeditionen in Arktis und Antarktis
Reiseagentur * Heinrich-Böll-Str. 40 * D-21335 Lüneburg * Deutschland
Tel +49-4131- 223474 Fax +49-4131-54255 infos@polaradventures.de www.polaradventures.de











POLAR ADVENTURES

Schiffs- und Flug- Expeditionen
in Arktis und Antarktis

Saison Arktis 2024 & 2025

Reederei Direkt-Angebote

**ab-bis Hafen für individuelle
Planungen**

**alle Abfahrten der Saison inkl.
englischsprachiger Termine**



Greenland Sailing Expedition

Live on board a traditional sailing ship for 7 amazing days in the natural wonders of Scoresby Sund in East Greenland. Encounter the arctic landscape and wildlife in one of the most remote places in the world

This is a once-in-a-lifetime opportunity to sail in the largest and one of the most remote fjords on Earth, surrounded by untouched natural phenomena such as glaciers, icebergs and ice crusts. Far from being your everyday experience, the picturesque sceneries are unparalleled. Whether in Red Island's Iceberg city, the mountainous Øfjord, overlooking amazing archipelagos near Bear Island or scouting for wildlife in Harefjord, Greenland's spectacular landscape leaves everyone speechless.



As we sail through the unspoiled arctic landscape – or when ashore – we might come across some of Greenland's sensational wildlife in their natural habitat. Although rare, polar bears, reindeers and narwhales have been spotted as they curiously observe our passing. Other animals are more common, especially snow hares, seals and muskoxen. Regardless of whether hiking in the breathtaking arctic environment or onboard our vessels sailing through the kingdom of ice, the feeling of spotting the exceptional wildlife cannot be described.

Last but not least, we will visit Ittoqqortoormiit, one of the most isolated villages on the western hemisphere. Rarely visited by tourists, this home of roughly 450 hardy inhabitants is truly awe-inspiring, as it is possible to experience the historical and cultural roots of this traditional Inuit community.

Greenland Expedition Itinerary

Day 1 (Wednesday) – Ahoy Greenland! Let the Adventure Begin

Depart Reykjavík for a flight to Constable Point in Greenland, a small airfield west of Hurry Inlet in Jameson Land. Embark the sailboat and get an introduction and a safety briefing by the crew before sailing towards the village of Ittoqqortoormiit, one of the most isolated villages in the world*. There will be a brief visit, where passengers are able to stroll around and experience the tranquility associated with its remoteness.

Ittoqqortoormiit was founded in the 1925s by people from Ammassalik island. It is the most northerly settlement on the east coast of Greenland. The 450 inhabitants make their living mostly by subsistence hunting of seals narwhales, muskoxen and polar bears. The quaint little houses dot the rocky slopes of south Liverpool Land with magnificent views of Kap Brewster and the Volquart Boons Coast to the south.

* This is a rough schedule. If the conditions do not allow for visiting Ittoqqortoormiit on the first day, it will be done on the last day.

Day 2 (Thursday) – Iceberg Palaces & Inuit Settlement

Sail west between whole palaces of icebergs that gently drift under the influence of the currents in the Arctic waters after calving from the parent glaciers originating in the Inland Ice. Anchor at Hekla Havn, on Denmark Ø, the site of an old Inuit settlement and wintering camp of the first scientific expedition to Scoresby Sund over a hundred years ago. The day ends with a

short evening walk exploring Hekla Havn and the surrounding area.

Day 3 (Friday) – The Day of the Fjords: Massive Mountains & Granite Cliffs

Sail west through the narrow Føhnfjord with the majestic basalt mountains of Gåseland on the port side and 2000 meters high sheer granite cliffs of Milne Land on the starboard side. After being up close to the peculiar looking Red Island and even landfall at the red sandstone shore, the tour continues to the north through Rødefjord which is often filled with both larger icebergs and ice crust from icebergs that are breaking up. We will arrive in Harefjord in the late afternoon where anchors are set.

Day 4 (Saturday) – Hiking & Wildlife Scouting

Make sure to pack your hiking boots because the whole day is spent ashore in Harefjord scouting for muskoxen, snow hares, grouse, geese and other wildlife, which normally graze on the south-facing slopes. This easy to moderate approx. 6-hour hike takes us on top of a ridge where we will have lunch with a breathtaking view over Harefjord, where the terrain drops down on each side and the glacier tongues descend into the sea. Those who prefer less exercise can stroll at the coast or stay on board enjoying the view.

Day 5 (Sunday) – Setting Sails in the Majestic Øfjord

The sailing continues eastwards through the awesome Øfjord. This is one of the most spectacular parts of the trip. Terrific mountain peaks and granite walls tower 2000 meters up from the sea just like if the Cerro Torre (one of the majestic

mountains of the Southern Patagonian Ice Field in South America) and Fitzroy river (in Queensland, Australia) has been moved to the Arctic: A true feast for the eyes. Usually, the sea breeze in the Øfjord during the middle of the day allows sails to be set. A close look at some of the most amazing cliffs and a glacier front. This day ends by setting anchors in Jyttes Havn in the late afternoon.

Day 6 (Monday) – Outdoor Adventures & Cooling Down in the Sea

The day is spent hiking in and around Jyttes Havn in Bear Islands as this is possibly one of the nicest and most picturesque anchorages in Scoresby Sund. There are two options of a longer or shorter hike in the Bear Islands, or on the northernmost tip of Milne Land, a short zodiac ride away. Jyttes Havn is the place to try your skills at sea swimming at 71°N and temperatures can be as surprising as 13°C in the summertime. If conditions and time allow, we will tend a bonfire on the beach and share stories.

Day 7 (Tuesday) – Archipelagos & Icebergs: Make Sure You Charge Your Batteries

Sailing the channel between the Bear Islands and Milne Land with a breathtaking view of the spectacular archipelago. As we sail into the last evening and night of the trip it is likely that we'll be experiencing sights of the largest and the most fascinating icebergs of the journey. This provides a fantastic opportunity for photographs of the majestic and impressive icebergs that are often found in this particular area. When we wake up the next morning we are anchored at the at the airstrip in Constable Point.*

* If conditions do not allow for visiting Ittoqqortoormiit on the first day, it will be done on this day.

Day 8 (Wednesday) – Good Bye Greenland. Now: Life After Greenland!

The last morning we will enjoy a good breakfast together, write in the diary on board and share contact information with each other. Then we will disembark the sailboat for the last time and board the aircraft in Constable Point and fly back to Reykjavík, Iceland. In Iceland, the adventures of the expedition begin to sync in and your life after Greenland begins!



Included

- International flight Reykjavík – Constable Point – Reykjavík.
- Accommodation on board in made up bunks/beds with shared facilities.
- All meals on board the sailing ship.
- Services of the crew, hiking excursions (as per itinerary) and arrangements

Not included

- Airfare to and from Iceland.
- Visas or Individual travel insurance.
- Excess baggage charges.
- Laundry charges and items of personal nature.
- Alcoholic beverages (available for extra charge & to be paid upon departure with cash money).
- Optional pre or post tours in Iceland

Flight information

Reykjavík – Constable Point – Reykjavík, departure from Reykjavík Domestic Airport.

Estimated flying time: 1 hour 40 min.

Guide

- Expert in sailing & wildlife of Greenland.

Duration

- 8 days (thus 8 days & 7 nights on board).

Greenland Expedition Route Map



Departures 2024

Price: 6.800 EUR per person



Schooner Opal

12 passengers

[More info on Opal](#)

24 July – sold out
31 July – sold out
7 August – sold out
14 August – sold out
21 August – sold out
28 August – sold out
4 September – sold out



Schooner Hildur

9 passengers

[More info on Hildur](#)

14 August – AVAILABLE
21 August – AVAILABLE
28 August – sold out
4 September – sold out



Tilvera

11 passengers

[More info on Tilvera](#)

21 July – AVAILABLE (including crossing)
31 July – sold out
7 August – sold out
14 August – sold out
21 August – sold out
28 August AVAILABLE
4 September AVAILABLE
11 September – AVAILABLE ([East Greenland Extended](#))

Departures 2025

Price: To be announced

Schooner Opal

12 passengers

23 July
30 July
6 August
13 August
20 August
27 August
3 September

Schooner Hildur

9 passengers

13 August
20 August
27 August
3 September

Tilvera

11 passengers

23 July
30 July
6 August
13 August
20 August
27 August
3 September

Frequently Asked Questions (FAQ)

After collecting your luggage upon arrival in Greenland a pickup truck with an open and wide platform will transport it to the beach while we all walk together (approx. 10-minute walk). A zodiac transports us from the beach to the schooner, where the crew provides everyone with a warm overall for the tour. Upon boarding the vessel, you'll be shown to your cabin/bunk.

How do I get from the airport to the boat?

The Greenland sailing tour is not challenging unless you really want it to be. You can unwind and relax surrounded by the beautiful stunning landscape of Greenland. You will be able to do some easy to moderately difficult hikes (always accompanied by a professional guide) when ashore in various beautiful settings, and if willing, and only if, you can help the crew on board in their tasks while cruising or sailing.

How difficult is the Greenland sailing tour?

No specific preparations or skills are required for the trip itself, but a good spirit and love for the nature and adventure is a „must-bring-along“!

Do I need to bring sleeping bags and towels along?

No, we provide warm bedding, covers, blankets and a set of towels.

How is the accommodation onboard?

Please understand, space onboard is limited, also for luggage storage (hardcover luggage is not an option). You will receive an info sheet indicating your bunk once your reservation has been confirmed and booked.

We operate three different schooners:

Donna Wood: The cabins in Donna Wood have bunk beds in ordinary size.

Hildur: Hildur has three cabins with bunk beds, other bunks are in the living room area.

Opal: The cabins in Opal have bunk beds.

How is the food offered onboard and do you offer beverages?

Our full-board service includes breakfast, lunch, and dinner. We have put a lot of care in planning supplies and your meals. Occasionally we also serve a light snack during the day, and snacks are also available upon request. Ice cold water is available at all times and alcoholic beverage/liquor are for sale onboard. After you confirm your booking, a medical Information sheet will be sent to you, gathering information on your health and/or allergies.

Is there a shower onboard?

Yes, there are two hot showers onboard, which are available at all times. Please keep in mind though that water supply can be limited, therefore we will kindly ask you to adapt.

How is the accessibility onboard?

Please be aware, the staircases to living quarters have steep stairs but with good railing and parts of the ship may have low ceiling. You should also be aware, that transfer between land and our schooners are operated by zodiac (there are no harbours in the whole of Scoresby Sound area), so there is no gangway.

What should I bring with me on the Greenland tour?

- Sunglasses.
- Sun-protection and bug repellent.
- Warm clothes incl. scarf, mittens, hat and warm thermal underwear.
- Light wool sweater or fleece (2nd layer).
- Warm Jacket – Wool or fleece (3rd layer).
- Shell Jacket or/and Rain jacket with hood – Waterproof and breathable material. Gore-Tex or alternative.
- **The boat is not a catwalk. Less is more.**
- Hiking Boots – The boots should be of leather (or leather and synthetic) with a high cut to give sufficient ankle support. Preferably the sole should be soft but robust. Gore-Tex or alternative waterproof membrane is a preferable extra.
- Reusable waterbottle.
- Toothbrush.
- Optional: camera equipment – Incl. spare batteries, memory card and/or films, earplugs, small flashlight, binoculars and other personal belongings.
- It is advisable that what you wear is either waterproof or easy to dry.

Can I wash or/and dry your clothes?

Due to a shortage of water supply, we will ask you to avoid cleaning your clothes on board. If anything gets wet during the trip, the engine room is very warm and can be used as a perfect drying place.

Can I recharge batteries and use the electrical power onboard?

Power for charging batteries is available at all times (standard EU socket).

Is there phone / web access?

Cell phone signal is only available at the airport in Constable Point and in Ittoqqortoormiit.

If urgent, passengers can make a phone call with one of the ship's satellite phones or send e-mail, SMS or fax via Inmarsat (the ship's satellite communications system)

How is the climate / weather ?

You can expect temperatures between 2 and 12°C (35-54°F), but the area is also known for having very little rain. It can be windy but on clear, calm days the sun can be very strong. Due to the long-lasting high pressure over Greenland, the weather is usually very still.

Do you use the sails most of the time?

No. Due to still weathers, narrow fjords and many icebergs we use the engine most of the time when traveling in the fjord system. We will, however, take up sails when possible and time allows – and at least ones during the expedition. The crew will gladly and proudly educate you about the schooners as sailing ships.

Can I help/assist onboard?

You are more than welcome to assist at any point with whatever duties need to be done – but it is not mandatory at all.

Am I likely to be seasick?

No, you're not. However, if you tend to suffer from sea sickness, the best advice is to take sea sickness precautions. If you haven't been to sea before, it's better to be safe than sorry and take preventative measures.

The excitement of your approaching sea cruise needn't be spoiled with the fear of seasickness. Until you actually sail, there's no way to tell. Additionally, it's important to keep in mind that the sea in Scoresby Sound fjord is very calm and you are therefore less likely to get seasick.

Do I need cash and various monies currencies?

We kindly ask to pay your consumption of alcoholic beverages onboard on the last day in cash in ISK or EUR. We do not accept credit cards.

There are small shops and a supermarket in Ittoqqortoormiit. Credit cards are accepted only at the supermarket.

POLAR ADVENTURES

Schiffs- und Flug- Expeditionen
in Arktis und Antarktis

Saison Arktis 2023 & 2024

Die Schiffe

POLARADVENTURES Schiffs- und Flug-Expeditionen in Arktis und Antarktis

Reiseagentur * Heinrich-Böll-Str. 40 * D-21335 Lüneburg * Deutschland

Tel +49-4131- 223474 Fax +49-4131-54255 infos@polaradventures.de www.polaradventures.de

Schooner Hildur

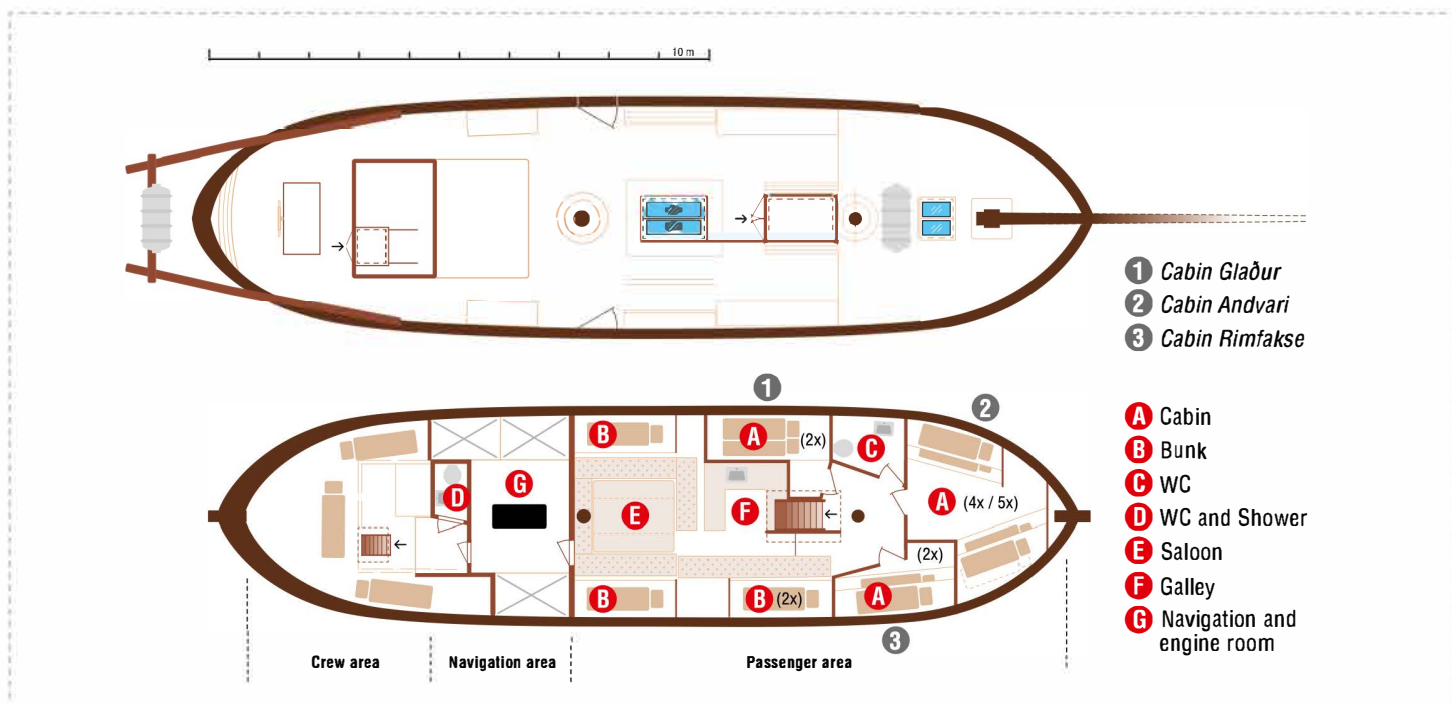


Hildur was built in Akureyri in 1974 by two shipwrights, Gunnlaugur and Trausti. Trausti and sons would later become good friends with North Sailing and help the company convert most of it's boats into passenger vessels. North Sailing owners got to know their special skills and enthusiasm for wooden boats and set a goal to later behold one of the three big wooden boats built in their shipbuilding station. It was then in the summer of 2009 that Hildur sailed into Husavik Harbour but only for a rather short visit in the local shipyard for overhaul before a 10 day journey to Denmark where she would be converted into a two masted schooner with 250 sqm of sails in the shipyard of Christian Jonsson in Egersund.

Specs

Gross tonnage:	35
LOA:	26 m (LOD 18m)
Beam:	4,8 m
Sail area:	250 sqm
Hull material:	Oak
Built, where:	Akureyri
Built/rebuilt:	1974/2010
Passenger capacity:	50
Engine:	Scania
kW/horsepower:	105/141
Port of registry:	Húsavík
Flag:	Iceland

DECKPLAN **HILDUR**



Hildur interior photos



The silent electric sailboat



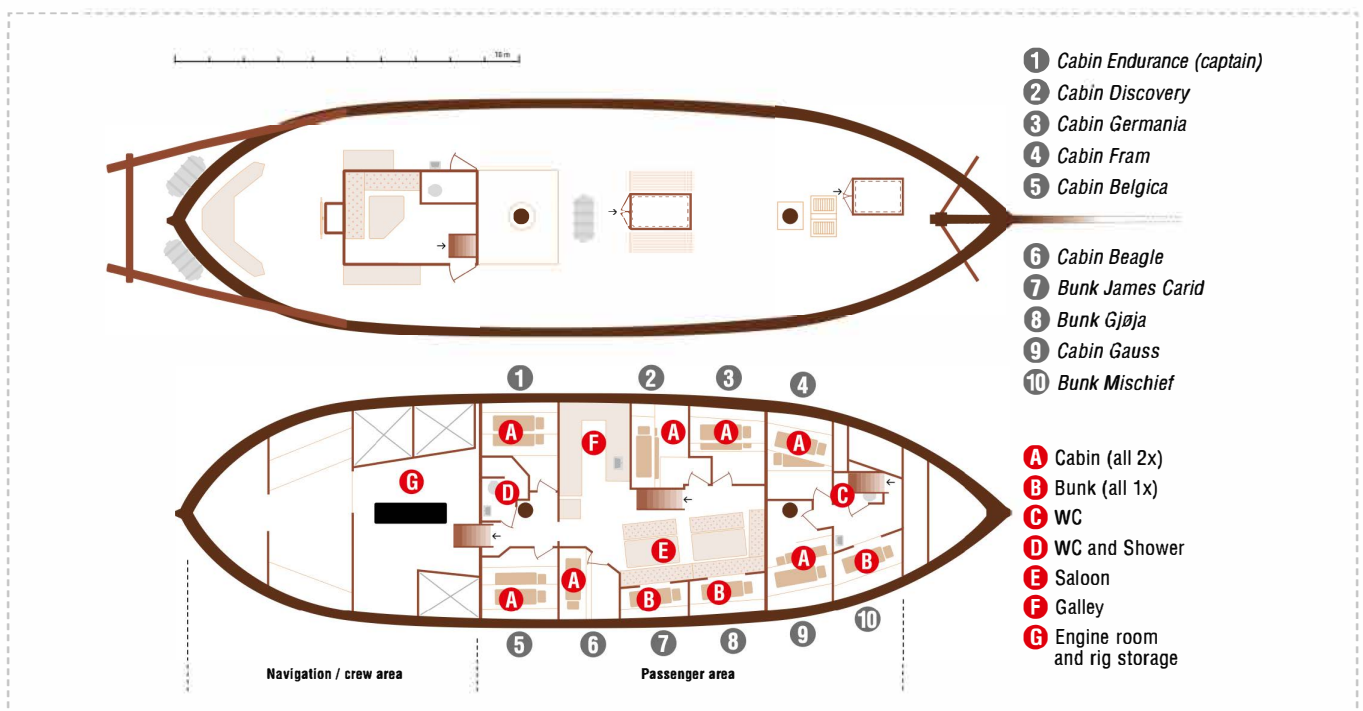
Built at the Bodenwerft in Damgarten, Germany in 1951, she served as a trawler in the Baltic- and North Sea and in the Barents Sea. In 1973 new owners started her restoration. During 8 years until 1981, Opal was converted to the elegant but seaworthy, two masted schooner she is today. She has sailed all over the world, completing several trans-Atlantic crossings, being carefully maintained through the years. Opal has remained with the same owners, until becoming part of North Sailing ´s fleet in early 2013. She has undergone restoration and had interior work done to better fit her for the new purpose as an expedition ship.

The Opal has six double/twin cabins plus crew facilities. She has three bathrooms, two showers. She comfortably fits 12 passengers, plus her crew.

Specs

Gross tonnage:	69
LOA:	33 m (LOD 24m)
Beam:	7 m
Sail area:	500 sqm (10 sails)
Hull material:	Oak
Built, where:	Damgarten, Germany
Built/rebuilt:	1951/1973–1981
Passenger capacity:	60
Engine:	Electric hybrid drive
kW:	120
Port of registry:	Húsavík
Flag:	Iceland

DECKPLAN OPAL



Opal interior photos



Donna Wood



The latest addition to the North Sailing fleet is the beautiful two mast oak ship Donna Wood built in 1918. Representing Danish shipbuilding tradition at its very best Donna Wood was originally built as a lighthouse ship but in 1990 the ship underwent massive restoration and was equipped with rigging and sails.

Donna Wood is a roomy ship with a deck saloon seating 24 and ample space below deck comfortably accommodating 12 people in 7 cabins equipped with washbasins and closets. The hallway features spacious shared shower facilities and toilets.

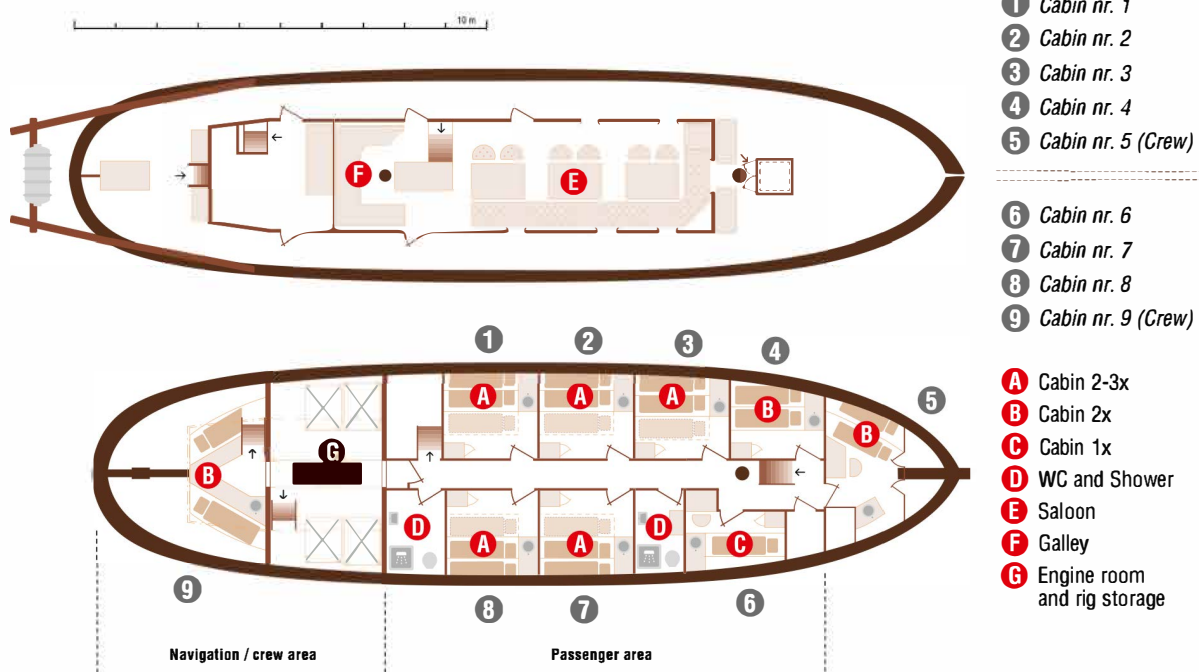
Donna Wood is the eighth ship of the North Sailing fleet, fourth in the line of sailing ships, but in addition North Sailing operates four oak wood boats in whale watching.

Donna Wood will be deployed for sailing expeditions in Iceland and in Greenland which have become increasingly popular. Last summer North Sailing operated the schooners Opal and Hildur with great success exploring the magnificent Scoresby Sound fjord in Northeast Greenland. With the addition of Donna Wood, North Sailing seeks to respond to the growing demand for sailing and adventure expeditions.

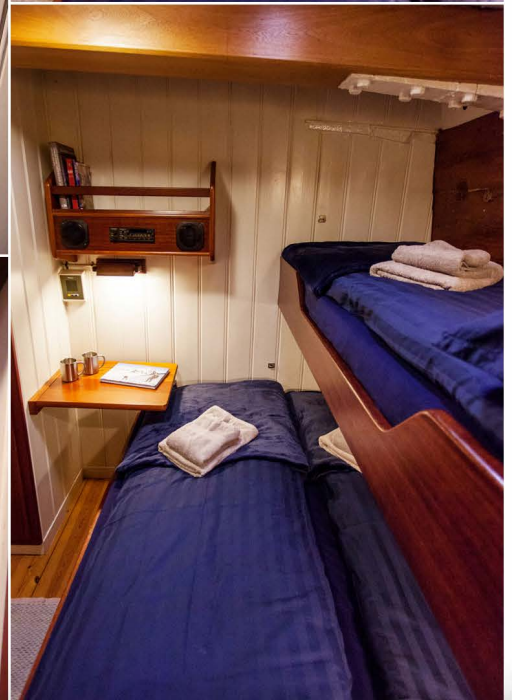
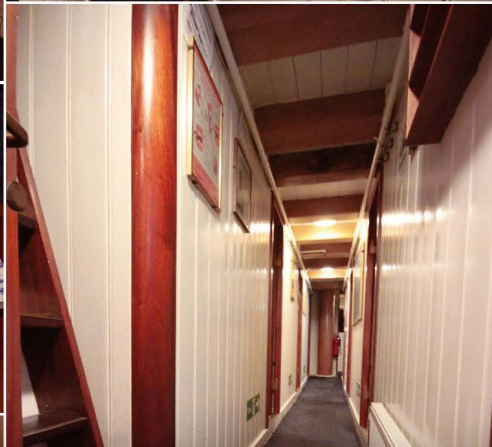
Specs

Gross tonnage:	
LOA:	31,2 m (LOD 21,5m)
Beam:	5,65 m
Sail area:	400 sqm
Hull material:	Oak
Built, where:	Denmark
Built/rebuilt:	1918/1990
Passenger capacity:	12
Engine:	Scania
kW/horsepower:	/390
Port of registry:	Copenhagen
Flag:	Denmark

DECKPLAN DONNA WOOD



Donna Wood interior photos



TILVERA

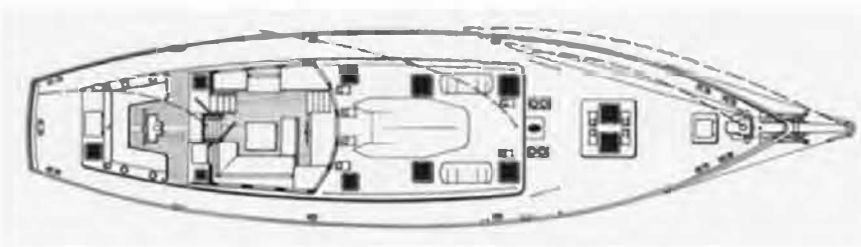
Tilvera is a wonderful steel ketch built in the Netherlands and originally owned by Heinz Wutschke & Greet Dekker. She is strong and capable to sail in all kind of weathers and oceans. She has been sailing for more than twenty years around the world, including both poles proving that she is totally seaworthy and made for adventures. She has eight comfortable cabins (there of six twin cabins for guests), an spacious saloon with an inspiring library and a charming deckhouse. Beautifully maintained and well taken care of, Tilvera is ready to sail around the world inspiring minds and hearts and serving as a home for explorers and restless minds.



Photo by Greet Dekker

Technical specifications

Mat. haul:	Steel
Length:	22 meter
Breadth	5,5 meter
Draught:	2,8 meter
Displacement:	49 ton
Sails:	240 m ² – 515 m ²
Engine Daf 825:	160 hp
1st Generator:	16 Kw
2nd Generator:	13 Kw
Guest berths:	10/11
Life rafts:	2 x 16 people
Life jackets:	16
Sailing area:	World wide



We are tight to the sea...



Belén is a marine scientist that has dedicated the last ten years of her life on studying the oceans. She has been leading projects in sustainable tourism, whale research, underwater acoustic and citizen science. Belén also works as a wildlife guide and sailor, and has sailed in several places around the world including both poles. She is the founder of "[Ocean Missions](#)", a non-profit organization in Húsavík, Iceland, that aims to inspire people to protect the oceans by an excellent combination of science, education and sailing. Now she is getting her captain licence at [Enkhuizen Sailing School](#) to sail around the world.

Heimir is from Húsavík, Iceland. He is an explorer by heart and sailor by soul. He has been a captain for more than 20 years on whale watching trips and expeditions, primarily in the Arctic regions. He is the main captain of the beautiful hybrid electric [Schooner Opa](#) and manager in the family company [North Sailing](#). Now his captain licence allows him to sail worldwide.



POLAR ADVENTURES

Schiffs- und Flug- Expeditionen
in Arktis und Antarktis

OFFLINE-KATALOG-ANFORDERUNG

Sehr geehrte Reise-Interessenten. Vielen Dank für Ihr Interesse und den Download eines digitalen Kataloges im PDF-Format.

Gerne senden wir Ihnen zusätzlich bei weitergehendem Interesse die ausgewählten PDF-Inhalte als gedruckte Version auf dem Postweg.

Bitte nennen Sie unten den gewünschten Katalog und senden Sie dieses Formular per Post oder Fax an uns zurück.

Bitte senden Sie mir den aktuellen Katalog für folgendes Schiff/ Tour:

--

Bitte senden Sie den ausgewählten Katalog an folgende Adresse:

Vorname + Name

Telefonnummer

--	--

Strasse + Nr.

Faxnummer

--	--

PLZ + Wohnort

e-mail-Adresse

--	--

Bitte per Post an:

oder per Fax an 04131-54255

an POLARADVENTURES Schiffs- und Flug-Expeditionen in Arktis und Antarktis Heinrich-Böll-Str. 40 D-21335 Lüneburg
--

POLAR ADVENTURES

Schiffs- und Flug- Expeditionen in Arktis und Antarktis

**Unverbindliche Buchungsanfrage per Fax an 04131-54255 oder per Post an
Polaradventures, Heinrich-Böll-Str. 40, D-21335 Lüneburg, Deutschland**

Bitte unterbreiten Sie mir ein unverbindliches Angebot für folgende Leistungen:

- ☐ Veranstalter-Angebot mit Insolvenzversicherung nach deutschem Reiseveranstalterrecht + Preis in EUR
☐ Direkt-Angebot der ausländischen Reedereien (ausländ. Reiserecht + Preis in USD zum Tageskurs in EUR)

Schiffsname		
Reisename/ -Route		
Abfahrt von - bis (tt/mm - tt/mm/jj)		
Alternative Abfahrt (tt/mm - tt/mm/jj) (falls ausgebucht)		

Kabinenkategorie	
Alternative Kabinenkategorie (falls ausgebucht)	

- ☐ Doppelkabine ☐ Doppelkabine zur Einzelnutzung ☐ Halbe Doppelkabine zur Mitbenutzung

Zubringerflüge:

Abflughafen	
Hinflugdatum (tt/mm/jj)	
Rückflugdatum (tt/mm/jj)	
bevorzugte Airline	

- ☐ Economy-Class ☐ Business-Class

Zusätzliche Hotelübernachtungen:

Hotelname/Übernachtungsort		
Aufenthalt von - bis (tt/mm - tt/mm/jj)		
Hotelname/Übernachtungsort		
Aufenthalt von - bis (tt/mm - tt/mm/jj)		

Reiseversicherungen:

- ☐ keine
☐ Reiserücktrittskostenversicherung
☐ Komplettschutz (Reiserücktritts-, Kranken-, Unfall-, Gepäck- und Notfallversicherung)

Persönliche Angaben:

1. Reiseteilnehmer Vorname, Name / Geburtsdatum		
2. Reiseteilnehmer Vorname, Name / Geburtsdatum		

Angebot bitte:

<input type="checkbox"/> per Email an (Emailadresse)	
<input type="checkbox"/> per Fax an (Nummer)	
<input type="checkbox"/> per Post an (Vorname & Name) (Straße & Nr.) (PLZ & Wohnort)	

POLARADVENTURES Schiffs- und Flug-Expeditionen in Arktis und Antarktis

Reiseagentur * Heinrich-Böll-Str. 40 * D-21335 Lüneburg * Deutschland

Tel +49-4131- 223474 Fax +49-4131-54255 infos@polaradventures.de www.polaradventures.de