

POLAR ADVENTURES

Schiffs- und Flug- Expeditionen
in Arktis und Antarktis



Arktis Expeditionen

POLARBÄREN-BEOBACHTUNG

ARCTIC SAFARI CAMP

Frühjahr

Nunavut (Kanada)

POLARADVENTURES Schiffs- und Flug-Expeditionen in Arktis und Antarktis
Reiseagentur * Heinrich-Böll-Str. 40 * D-21335 Lüneburg * Deutschland
Tel +49-4131- 223474 Fax +49-4131-54255 infos@polaradventures.de www.polaradventures.de

POLAR ADVENTURES

Schiffs- und Flug- Expeditionen
in Arktis und Antarktis

Saison 2024 & 25

Direkt-Angebote

**ab-bis Winnipeg (Kanada)
für individuelle Planungen**

SPRING POLAR BEARS & ICEBERGS OF BAFFIN



ARCTIC KINGDOM



DESIGNED FOR EXCLUSIVITY & THE ADVENTURE OF A LIFETIME

Journey to one of the most incredible spots in the world to view polar bears amidst the snowy icebergs.

Travel to the Arctic island of Qikiqtarjuaq, off the eastern coast of Baffin Island, Nunavut. Our photo safari brings you into the heart of the Arctic in early spring, where travellers seldom get to experience the wonders of the north as the winter wonderland shows signs of longer days and the metamorphosis of the Spring thaw on this Arctic world.

Spend your days travelling in traditional Inuit qamutiks getting breathtaking photos of iconic Arctic wildlife as you glide across the ice of the Arctic Ocean as you look for splendid wildlife viewing opportunities. Surrounded by snow-capped mountains and soaring icebergs, view polar bears up close in undisturbed splendour as they venture on to the sea ice and climb majestic icebergs. Take in vast landscapes, get the opportunity to view and photograph unique wildlife, and possibly enjoy the beauty of the Northern Lights at night after gourmet dinners.

Perfect for professional and keen amateur photographers looking for rare wildlife photography opportunities, this is an authentic Arctic adventure.

HIGHLIGHTS

- Experience the exclusivity of the true Arctic with mother polar bears and cubs in early spring
- Stay in our Tented Safari Camp, set on approximately 2.5 meters (8 feet) of solid ice (or more)



- Capture unique and stunning photographs of polar bears, and possibly cubs, as the polar bear's lounge on icebergs and the sea ice
- Take in stunningly vast landscapes and panoramic views of soaring icebergs and mountains in the Arctic
- Get the chance to experience the Northern Lights at night in all its glory in the Arctic

ITINERARY

This safari is perfect for professional and keen amateur photographers looking for rare wildlife photography opportunities, seeing polar bears on icebergs and an authentic Arctic adventure.

In the Arctic, no two trips are the same. The goal of our itineraries is to maximize your experience in this remarkable location, but it's important to understand that we have your safety and best interests in mind. Itineraries may shift because of weather conditions. It's also key to appreciate that animals are wild, and they appear on their own, and there is no guaranteeing encounters. We do use our experience in the region and knowledge of wildlife behaviour to provide the best experience possible.

DAY 1 | ARRIVE IN QIKIQTARJUAQ, NUNAVUT

Depart Ottawa International Airport for Qikiqtarjuaq. Transfer to a local hotel for a hot dinner.

MEALS INCLUDED: Breakfast and snack (in-flight), Dinner

DAY 2 | YOUR ADVENTURE BEGINS

After breakfast travel to camp by snowmobile and qamutik



(a traditional Inuit wooden sled with suspension or foam padded seats pulled behind a snowmobile). We move over sea ice, and even though there have been suspension seats added to the qamutiks for a smoother ride, the later one goes in the season, the bumpier the ride could potentially be, you will experience the exhilaration of gliding across the ice. . Get your first glimpse of deep glacial carved fiords, icebergs frozen into the ice forming towering pillars, and chances of spotting wildlife on the way to camp. Arrive in camp before dinner to get settled in and enjoy a tour of the facilities to get you comfortable right away.

MEALS INCLUDED: Breakfast, Lunch, Dinner

DAYS 3 – 7 | IN CAMP

A photographer's paradise! Enjoy full-day explorations of the majestic High Arctic wilderness by snowmobile and qamutik, as Inuit guides use traditional expertise to locate and help you safely view polar bears, close-up. Weather and snow conditions determine the exact route. Enjoy hot lunches served on the land and gourmet comfort food dinners at camp. Schedules are determined by wildlife and our guests. Enjoy the Northern Lights and great company at night.

MEALS INCLUDED: Breakfast, Lunch, Dinner

DAY 8 | DEPART FROM CAMP

After a hot breakfast, capture a few last memories and photographs. Return to Qikiqtarjuaq and overnight in a local hotel.

MEALS INCLUDED: Breakfast, Lunch, Dinner



DAY 9 | DEPART FOR HOME

Fly from Qikiqtarjuaq to Iqaluit, with views of mountain peaks and ancient glaciers. Then from Iqaluit, you will continue to Ottawa for your journey home.

MEALS INCLUDED: Breakfast, Snack and Dinner (in-flight)

DISCOVER CANADA'S HIGH ARCTIC

QIKIQTARJUAQ, NUNAVUT

Qikiqtarjuaq, meaning “the big island” in Inuktitut, is a hamlet community nestled among the Arctic Cordillera Mountain range and off the eastern coast of Baffin Island. “Qik”, as it’s often referred to, is renowned for the sheer number of icebergs passing through and their bowhead whale and polar bear populations.

This friendly community lies above the Arctic Circle and the residents are almost entirely Inuit. All of the Inuit guides on our trip are from Qik and know this area and the wildlife very well. Qik is also the eastern gateway to Auyuittuq National Park, one of Canada’s most breathtaking parks known for its towering granite mountain peaks.

ACCOMMODATIONS

TENTED SAFARI CAMP ON ICE

While it may appear like a basic tented camp from the outside, our Tented Safari Camp continually surprises and exceeds our guest’s expectations with its roomy and warm interior. The sleep tents are large and spacious with a large entrance vestibule, ample standing room and space for all your camera gear and luggage.

The ‘Tented Safari Camp’ will be set on the sea ice. This allows for an authentic Arctic experience in this remote location, which provides the best opportunity for rare polar bear sightings.



The sleep tents feature steep sidewalls, 14 m² (152 ft²) of livable space and a ceiling height of more than 2 m (7 ft 2 in). There is more than enough room to ensure two guests and all their gear stays warm and dry. The large entrance vestibule creates an additional 4.3 m² (46 ft²) of storage space. All sleep tents contain two twin metal frame beds with mattresses, duvets, comforters and full-size pillows.

The insulated double walls of the tent act as a greenhouse, keeping you warm on the coldest nights. A heater is also provided to ensure you have warm, comfortable accommodation.

DINING TENT

We also strive to exceed your expectation with a diverse menu of delicious food. You will enjoy meals, snacks and desserts prepared by our executive chef in the central dining tent. This heated, open area tent has a family style dining table and breakfast bar with fresh coffee and hot tea.

BATHROOM FACILITIES

Bathrooms are shared. The heated bathroom tent includes waterless toilets and on-demand hot water sinks and showers. All bathroom toiletries such as soap, shampoo and hand cream are provided.

ELECTRONICS

Your camp is powered by generators that will allow you to charge your electronics before bed. Generators are turned off late at night and will be turned on again early the next morning. There is ample time to charge any electronics.



TRIP NOTES

The intent of our Spring Polar Bear and Icebergs of Baffin Safari is to introduce photographers and adventurers to the Arctic in early spring. This seldom-visited region is bursting with raw beauty, unique wildlife and landscape photography opportunities. While we cannot guarantee sightings of specific Arctic animals, you can expect to find an array of natural wonders and a truly unique experience on this exciting Arctic adventure.

During this time, the Qikiqtarjuaq region is home to polar bears and their cubs. This Arctic safari will provide you with opportunities to observe polar bears in their natural habitat, out on the ice.

The Arctic has many variables that can influence travel plans. Being relaxed, patient and flexible are important attitudes. Itineraries are general guidelines and may change due to weather and unexpected conditions.

GETTING THERE

Travel arrangements between your point of origin and Ottawa (YOW) are the responsibility of the traveller. We strongly recommend that participants travelling on reduced fare airline tickets continue their journey home from their gateway airport, the day following the final day of the trip. Weather conditions are unpredictable, and any deviation from a ticketed itinerary will result in a penalty regardless of the cause. We highly recommend that you plan on 'buffer time' to account for any possible delays in getting home.



IS THIS ADVENTURE FOR YOU?

This safari is perfect for anyone looking to see and photograph unique wildlife, icebergs and breathtaking landscapes. It is designed for amateur and professional photographers interested in authentic Arctic landscapes to photograph wildlife. It will be an adventure as we will be heading off the beaten track, beyond the usual tourist route and you will become among the first to explore this amazing region.



Weather conditions can be more extreme on this trip compared to other Arctic Kingdom safaris. While you don't need to have previous Arctic experience, an adventurous spirit will ensure you have a great time. Our expeditions are typically represented by a range of international participants. Having a laid back, open minded, and patient demeanour is important.



LEVEL OF DIFFICULTY

COLD TEMPERATURES:

DAILY TIME SPENT TRAVELLING:

There are two main factors to consider when deciding on this trip. The cold weather and the amount of time spent travelling.

This trip does not take you to one location to spend the day, but instead, you will be touring the landscape in search of wildlife for long days in Spring weather and temperatures.

If you think you may have difficulty spending most of the day inside the qamutik, we suggest more accommodating trips.

Guests are provided very warm clothes and jackets, but the temperature is worth considering when deciding on this trip.

Of course, good health is fundamental to travel in any remote



region. All participants will be required to obtain emergency medical and evacuation travel insurance.

While one can choose to do as little or as much as he/she would like throughout the adventure, guests seeking a more relaxed trip might enjoy our Polar Bears and Glaciers of Baffin Island safari, held in the summer in the same area.

SPIRIT OF ADVENTURE REQUIRED

On this expedition, the itinerary of each day will be determined by wildlife and the weather. There may be days with plenty of opportunities for wildlife photography, but there will also be days that require waiting to get the perfect shot, and there may be days spent in camp due to weather.

It is assumed that participants have the spirit of adventure within themselves to enjoy the unique solitude of the Arctic and free time provided. If this outlook is not for you, we can assist in finding an alternative Arctic trip that offers a more structured itinerary.

POLAR RENTAL CLOTHING PACKAGE

With almost two decades of experience in all types of Arctic weather, we have seen what works and what doesn't. Arctic Kingdom has assembled a top-of-the-line clothing package available for rent that will enhance your Arctic experience and allow you to enjoy your Arctic expedition in comfort, no matter what Mother Nature brings.

All of our staff have depended on the same clothing package for years of Arctic adventures, so you can rest assured you are getting the best options available. We realize that good quality Arctic-worthy equipment is expensive to purchase all at once and may not be necessary for a one-time Arctic adventure. Our Arctic



Clothing Rental Package will ensure you are comfortable, warm, and dry for your Arctic expedition.

Please email info@arctickingdom.com for more details.

GOURMET MEALS

We know that no amazing Arctic experience is complete without delicious food. Our private chef manages the kitchen tent. It will be here that your chef and culinary team will prepare the day's meals, snacks and delicious desserts. The dining/lounge area has a convenient buffet table where snacks and hot drinks are provided. The kitchen is not kosher or halal. If you have special dietary needs, please advise us at time of booking.

DAYLIGHT HOURS

In March and April, the days are beginning to get longer. In March you can expect between 10 to 13 hours of daylight and in April you can expect approximately 13 to 16 hours of daylight.

WEATHER

MARCH & APRIL

While cold, temperatures during this season range they are rising. For March and April, average temperatures range from -40 to -20°C (-40 to -4°F). You can expect significant snow during this time.

WHAT TO EXPECT

This Arctic photo safari is designed for viewing and photographing animals in their natural habitat. We are pleased to collaborate with Inuit, who welcome guests to their traditional lands and continue to rely on the land for their survival.



We encourage our trip participants to be sensitive to the cultural and historical traditions of Inuit, including their traditional hunting lifestyle. You may see evidence of hunting as you wander through the communities. Examples include the stretching of sealskin to make boots or mittens, and Inuit dog teams being fed Arctic char or seal meat. While on our adventures, we may also come across an Inuit hunting party, as they have full hunting rights in this region. These sights can provide a window into cultural traditions that stretch back for generations and exist in harmony with the wild Arctic.

RELEVANT READING

To help you prepare for your adventure and learn more about the wildlife and regions you will be visiting, we suggest the following reading materials:

- “A Naturalist’s Guide to the Arctic”, E.C. Pielou • “Polar Bears: Natural History of Threatened Species”, Ian Sterling
- “Polar Bears: A Complete Guide to their Biology and Behaviour”, Derocher & Lynch
- [“The Arctic Circle & North Pole: What Defines Them”](#), Mat Whitelaw
- [“3 Personal Touches That Make Arctic Kingdom Trips Special”](#), Mat Whitelaw
- [“8 Tips for Arctic Wildlife Photography”](#), Arctic Kingdom
- [“People & Polar Bear Photobombing”](#), Mat Whitelaw
- [“Arctic Wildlife Behaviour: Photographing Wild Personalities”](#), Mat Whitelaw



WHY ARCTIC KINGDOM?

STAFF RATIO

STAFF 
GUEST 

MEALS | FOOD RESTRICTIONS

We know that no amazing Arctic experience is complete without delicious food. The chef will prepare the day's meals, snacks and delicious desserts. A hot lunch and beverages are provided at wildlife viewing locations. The heated dining/lounge has a family-style dining table and breakfast bar with fresh coffee and hot tea.

The kitchen is not kosher. If you have special dietary needs, please advise us at time of booking.

Arctic Kingdom is pleased to accommodate most special diets and dietary restrictions. These must be confirmed at time of booking to ensure sufficient time to procure any required items.

LOCALLY SOURCED FOOD

Arctic Kingdom purchases the maximum amount of food as possible in the communities we operate from to support local economies. Chefs have a natural eye for local garnishes they can forage around the camp like sorrel and mushrooms that may be included in delicious meals.

REMOTE DESTINATION

You will be above the Arctic Circle and transported to a remote, heated Tented Safari Camp on the ice. This remote location provides a pristine landscape with panoramic views of Canada's Arctic.

Located on the ice near Qikiqtarjuaq. The tented camp is completely self-sufficient and beautifully "off-the-grid."





SMALL GROUP SIZES

We choose to operate small group size tours because it provides remarkable experiences for our guests and a reduced ecological footprint. This ensures that everyone has space at locations for photos and there is always space for you and your tripod to get into fantastic positions.

FULLY GUIDED TOURS

With a combination of experience and expertise, you get to experience a fully guided safari. With Inuit guides who focus on tracking wildlife, animal monitoring and transportation, and then Expedition Leaders and Camp Managers who focus on your experience.



SOLO TRAVEL OPTIONS

We welcome solo travellers!

The whole tour is very inclusive and often accommodates solo travellers. Eat meals and travel with fellow like-minded people who are as excited as you are to be at this phenomenal location.

20 YEARS IN BUSINESS | ARCTIC PIONEERS | EXPERIENCED POLAR STAFF

Arctic Kingdom is the global leader in land-based travel, custom experiences and getaways in the Canadian Arctic. After 20 years of operating in this remarkable region, Arctic Kingdom has unparalleled expertise in Arctic wildlife and habitats, and unmatched access built through years of experience and relationships with Inuit communities. Based on the skills and knowledge of our expert Inuit guides, Arctic Kingdom has built one of the world's premier small-group polar bear and narwhal safaris in their natural Arctic environment. Arctic Kingdom strives to create journeys that invigorate and inspire guests.





RESPONSIBLE TOURISM

Arctic Kingdom seeks to ensure that all of our trips will contribute to the economy of the region. Tourism and film production can be a real boon to local communities, providing income, positive cultural exchanges, and bring focus to their natural environment.

We have a 'total approach' to responsible tourism. Everything, from the way we plan and operate our trips to the practices of Arctic Kingdom as a company, is geared toward making a positive impact on the regions we visit. Arctic Kingdom trips are designed to allow a high degree of economic benefit to the local communities; we hire local guides and local drivers, buy local produce (whenever possible, eat local food, and use local services, thus ensuring that as much money as possible is retained within the local economy and the host communities. We are continually reassessing our trips, trying at all times to ensure that they are socially, economically, and environmentally sound.

FAQ

With over 20 years of Arctic and expedition experience, we at Arctic Kingdom have been asked all kinds of questions. We understand that many of our guests have never partaken in an experience quite like our safaris nor have visited the Arctic before. We want to take this opportunity to make each of our guests feel comfortable and well prepared for their upcoming safari.

We've compiled a list of the top questions paired up with answers based on our knowledge and experience. Visit our FAQ page for all of your questions and answers:



SPEAK TO AN ARCTIC TRAVEL
ADVISOR TODAY TO PLAN YOUR
ADVENTURE

LET'S BE FRIENDS

Are you looking for more exciting photos and videos of the Arctic and the iconic animals that make this place so special?

Explore our social media platforms and add us as a friend for more inspiring Arctic content.



All photos used on social media are real photos taken by guests and expedition leaders. Follow [#Arctickingdom](#) on our platforms to see new photos.

Enjoy our [Youtube page](#) for wildlife videos and webinars, highlighting our variety of safaris throughout the year.

Trip Details

2024



2025



Price

CAD \$27,400* (tax included)

*per person, based on double occupancy. Flight pricing is subject to change

Location

Qikiqtarjuaq, Nunavut

Length

9 days/ 8 nights

Travel Package

Flights/Transfers* from
Ottawa, ON (YOW) to
Qikiqtarjuaq (YVM)

International gateway

Ottawa, ON (YOW)

Group size

12

Transportation

Snowmobile & Qamutik

Average temperature

-40°C to -20°C (-40°F to
-4°F)

Daylight

11 hours

Tentative Dates

March 18 - March 26, 2024
(Reserved)

March 26 - April 03, 2024
Waitlist Upon Request

April 6 - April 14, 2024
(Reserved)

April 14 - April 22, 2024
(Reserved)

Trip Details

2024



2025



Price

CAD \$33,110 (Tax Included)

*per person, based on double occupancy. *Flight pricing is subject to change

Location

Qikiqtarjuaq, Nunavut

Travel Package

Flights/Transfers* from Ottawa, ON (YOW) to Qikiqtarjuaq (YVM)

International Gateway

Ottawa, ON (YOW)

Group Size

12

Transportation

Snowmobile & Qamutik

Average Temperature

-40°C to -20°C

Daylight

11 hours

Tentative Dates

Late March - Late April 2025
Dates to be confirmed

Departure 1
(Reserved)

Departure 2
(Reserved)

Departure 3
(6 Spaces Available)

Departure 4
(Reserved)





Winter Polar Clothing Package Guide



Introduction

This polar clothing package is suggested for Arctic Kingdom trips in the fall, winter and early spring months, including the following:

- Spring Polar Bears & Icebergs of Baffin Photo Safari
- Polar Bear Mother & Newborn Cubs Photo Safari
- Polar Bear Migration Fly-In Photo Safari

Dressing for Arctic Weather & Conditions

Temperatures and weather conditions in polar regions varies widely depending on season and location. It can even change significantly throughout the week or day. In March and April, you may experience temperatures as cold as -40°C (-40°F), and in October and November average temperatures range from -5°C to -20°C (41°F to -4°F), with good chances of snow . Strong winds, either natural or from riding behind a snowmobile, can make temperatures feel much colder (wind chill).

Clothing is key to your comfort in the Arctic. While actual temperatures, weather conditions, and wind chill, differ by season and location, the basics of dressing for cold weather are the same. We recommend dressing in layers, adding or subtracting the layers according to your needs.

There are three essential layers:

1. Base Layer
2. Insulating Mid-Layer
3. Outer Layer

Base layers and insulating layers can be used in almost any type of weather or winter climate. The outer layer will be determined by the type of weather expected on your Arctic expedition.



Our Winter Polar Clothing Package

Our Winter Polar Clothing Package includes top of the line brands, including Canada Goose and Outdoor Research (OR). With more than a decade of experience in all types of Arctic weather, we know what works and what doesn't. Each item included in our Polar Clothing Package has been personally tried and tested in the extreme climates of the Canadian Arctic.

The Canada Goose Expedition Parka is your first line of defense against cold or unpredictable weather. This insulated parka features a durable, water repellent, Arctic-Tech shell. Paired with Canada Goose insulated winter pants and winter boots rated to -100°C (-148°F), you will be ready to face the elements.

To protect your head and hands, we recommend that you purchase a windproof hat, balaclava, liner gloves, windproof gloves, and snow goggles.

Our Winter Polar Clothing Package includes:

1. Canada Goose Expedition parka
2. Canada Goose down-filled snow pants
3. Winter boots
4. Waterproof insulated mitts
 - Duffle bag for carrying gear

1.



2.



3.



4.



Package Pricing

For guests on Arctic Kingdom trips, the price per rental is CAD \$695 plus tax.

featuring all the apparel and travel gear you need to get ready for and fully enjoy your Arctic adventure. Your purchases will be expertly handled by our online store partner, **New Headings**.

We have organized the gear you may need into sections to help with your decisions, including any accessories our guests find useful for maximizing their experience. Should you have any questions or if you are unsure of what season your trip falls into, please reach out to your Client Service Representative.

Sizing Charts

Men's Parka & Pants

	XS	S	M	L	XL	2XL
Chest	86-89cm 34"-35"	91-94cm 36"-37"	97-102cm 38"-40"	104-109cm 41"-43"	112-117cm 44"-46"	119-130cm 47"-51"
Waist	69-71cm 27"-28"	74-76cm 29"-30"	79-84cm 31"-33"	86-91cm 34"-36"	94-99cm 37"-39"	102-112cm 40"-44"
Hips	86-89cm 34"-35"	91-94cm 36"-37"	97-102cm 38"-40"	104-109cm 41"-43"	112-117cm 44"-46"	119-130cm 47"-51"
European	42	46	48	52	56	60

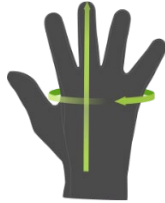
Women's Parka & Pants

	XS	S	M	L	XL
	2	4-6	8-10	12-14	16-18
Chest	81-84cm 32"-33"	86-89cm 34"-35"	91-94cm 36"-37"	97-102cm 38"-40"	104-109cm 41"-43"
Waist	66-69cm 26"-27"	71-74cm 28"-29"	76-79cm 30"-31"	81-86cm 32"-34"	89-94cm 35"-37"
Hips	91-94cm 36"-37"	97-99cm 38"-39"	102-104cm 40"-41"	107-112cm 42"-44"	114-112cm 45"-47"
European	36	38	40	42	46

Winter Boots

USA, Men	5	5.5	6	6.5	7	7.5	8	8.5	9	9.5	10	10.5	11	11.5	12	12.5	13
USA, Women	6.5	7	7.5	8	8.5	9	9.5	10	10.5	11	11.5	12	12.5	13	13.5	14	14.5
UK, Men	4.5	5	5.5	6	6.5	7	7.5	8	8.5	9	9.5	10	10.5	11	11.5	12	12.5
UK, Women	4	4.5	5	5.5	6	6.5	7	7.5	8	8.5	9	9.5	10	10.5	11	11.5	12
Europe	37	37.5	38	38.5	39	40	40.5	41	42	42.5	43	44	44.5	45	46	46.5	47
Japan	23	23.5	24	24.5	25	25.5	26	26.5	27	27.5	28	28.5	29	29.5	30	30.5	31

Waterproof Insulated Mitt

	S/7	M/8	L/9	XL/10	HOW TO MEASURE
Circumference	17.8-19.7cm 7.0-7.75"	20.3-21.6cm 8.0-8.5"	22.8-24.1cm 9.0-9.5"	24.1-25.4cm 9.5-10.0"	<p>Measure around a flat hand at the knuckles, do not include your thumb. Measure your hand length from the base of your palm to the end of your middle finger. Use the larger of the two measurements to select your glove size.</p> 
Length	16.5-17.8cm 6.5-7.0"	19.7-20.3cm 7.75-8.0"	21.6-22.8cm 8.5-9.0"	22.8-24.1cm 9.0-9.5"	

How to Select the Best Size

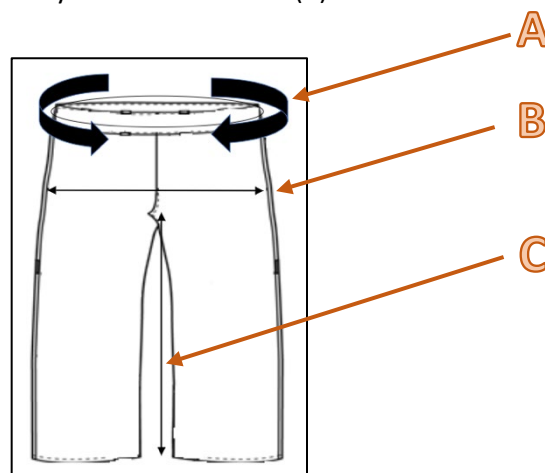
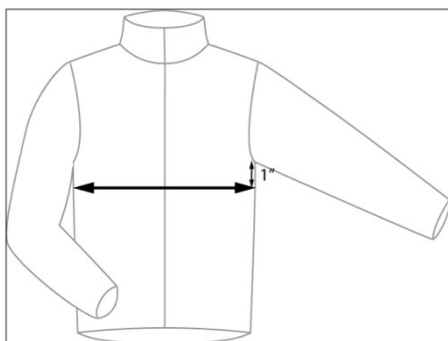
Chest Size

- Place measuring tape 1" below your arm pit and measure the circumference around your chest

Waist, Hip, Inseam

Keeping the tape measure a bit loose, measure the following:

- Waist - Measure the circumference around your waist (A)
- Hip - Measure 9" down from top of waist and measure your circumference (B)
- Inseam - Measure from crotch to your ankle (C)



Boot Size

- All of our boots are sized based on **USA Men's sizing**
- Find your regular shoe size on the sizing chart.
- Determine your equivalent US men's shoe size.
- Your appropriate boot size would be one full US men's size bigger than your US men's shoe size.
 - Example: Your UK Women's shoe size is a 6. According to the size chart, your US men's shoe size is a 7. Therefore, choose a size 8 boot on your order form. (See in blue below)
- Boots are only available in full sizes; half sizes are not available. If your US men's shoe size is a half size, choose the size 1.5 times bigger.
 - Example: Your shoe size is a European 42.5, which equals a US men's size 9.5. Therefore, select a size 11 boot on your order form (See in red below)

USA, Men	5	5.5	6	6.5	7	7.5	8	8.5	9	9.5	10	10.5	11	11.5	12	12.5	13
USA, Women	6.5	7	7.5	8	8.5	9	9.5	10	10.5	11	11.5	12	12.5	13	13.5	14	14.5
UK, Men	4.5	5	5.5	6	6.5	7	7.5	8	8.5	9	9.5	10	10.5	11	11.5	12	12.5
UK, Women	4	4.5	5	5.5	6	6.5	7	7.5	8	8.5	9	9.5	10	10.5	11	11.5	12
Europe	37	37.5	38	38.5	39	40	40.5	41	42	42.5	43	44	44.5	45	46	46.5	47
Japan	23	23.5	24	24.5	25	25.5	26	26.5	27	27.5	28	28.5	29	29.5	30	30.5	31

POLAR ADVENTURES

Schiffs- und Flug- Expeditionen
in Arktis und Antarktis

OFFLINE-KATALOG-ANFORDERUNG

Sehr geehrte Reise-Interessenten. Vielen Dank für Ihr Interesse und den Download eines digitalen Kataloges im PDF-Format.

Gerne senden wir Ihnen zusätzlich bei weitergehendem Interesse die ausgewählten PDF-Inhalte als gedruckte Version auf dem Postweg.

Bitte nennen Sie unten den gewünschten Katalog und senden Sie dieses Formular per Post oder Fax an uns zurück.

Bitte senden Sie mir den aktuellen Katalog für folgendes Schiff/ Tour:

--

Bitte senden Sie den ausgewählten Katalog an folgende Adresse:

Vorname + Name

Telefonnummer

--	--

Strasse + Nr.

Faxnummer

--	--

PLZ + Wohnort

e-mail-Adresse

--	--

Bitte per Post an:

oder per Fax an 04131-54255

an POLARADVENTURES Schiffs- und Flug-Expeditionen in Arktis und Antarktis Heinrich-Böll-Str. 40 D-21335 Lüneburg
--

POLAR ADVENTURES

Schiffs- und Flug- Expeditionen in Arktis und Antarktis

**Unverbindliche Buchungsanfrage per Fax an 04131-54255 oder per Post an
Polaradventures, Heinrich-Böll-Str. 40, D-21335 Lüneburg, Deutschland**

Bitte unterbreiten Sie mir ein unverbindliches Angebot für folgende Leistungen:

- ☐ Veranstalter-Angebot mit Insolvenzversicherung nach deutschem Reiseveranstalterrecht + Preis in EUR
☐ Direkt-Angebot der ausländischen Reedereien (ausländ. Reiserecht + Preis in USD zum Tageskurs in EUR)

Schiffsname		
Reisenname/ -Route		
Abfahrt von - bis (tt/mm - tt/mm/jj)		
Alternative Abfahrt (tt/mm - tt/mm/jj) (falls ausgebucht)		
Kabinenkategorie		
Alternative Kabinenkategorie (falls ausgebucht)		

- ☐ Doppelkabine ☐ Doppelkabine zur Einzelnutzung ☐ Halbe Doppelkabine zur Mitbenutzung

Zubringerflüge:

Abflughafen		
Hinflugdatum (tt/mm/jj)		
Rückflugdatum (tt/mm/jj)		
bevorzugte Airline		

- ☐ Economy-Class ☐ Business-Class

Zusätzliche Hotelübernachtungen:

Hotelname/Übernachtungsort		
Aufenthalt von - bis (tt/mm - tt/mm/jj)		
Hotelname/Übernachtungsort		
Aufenthalt von - bis (tt/mm - tt/mm/jj)		

Reiseversicherungen:

- ☐ keine
☐ Reiserücktrittskostenversicherung
☐ Komplettschutz (Reiserücktritts-, Kranken-, Unfall-, Gepäck- und Notfallversicherung)

Persönliche Angaben:

1. Reiseteilnehmer Vorname, Name / Geburtsdatum		
2. Reiseteilnehmer Vorname, Name / Geburtsdatum		

Angebot bitte:

<input type="checkbox"/> per Email an (Emailadresse)		
<input type="checkbox"/> per Fax an (Nummer)		
<input type="checkbox"/> per Post an (Vorname & Name) (Straße & Nr.)		
(PLZ & Wohnort)		

POLAR ADVENTURES

Schiffs- und Flug- Expeditionen
in Arktis und Antarktis

Saison 2024 & 25

Direkt-Angebote

**ab-bis Winnipeg (Kanada)
für individuelle Planungen**