

POLAR ADVENTURES

Schiffs- und Flug- Expeditionen
in Arktis und Antarktis



Arktis Expeditionen
POLARBÄREN-BEOBACHTUNG
NANUK POLAR BEAR LODGE
&
SEAL RIVER HERITAGE LODGE
Herbst / Manitoba (Kanada)

POLAR ADVENTURES

Schiffs- und Flug- Expeditionen
in Arktis und Antarktis

Saison 2023 & 24

Direkt-Angebote

**ab-bis Kanada für individuelle
Planungen**

**alle Abfahrten der Saison inkl.
englischsprachiger Termine**

POLAR BEAR PHOTO SAFARI



October - November



Nanuk Polar Bear Lodge



8 DAY PACKAGE OVERVIEW

Building on the success of our Seal River photo safari, this package is another must-do for photographers. Polar bears, wolves, and a host of other Arctic wildlife, all amidst wintry landscapes, lend themselves to spectacular photos. Pristine northern skies provide excellent provide aurora viewing opportunities to round out the adventure.

HIGHLIGHTS

- Daily, guided hikes across the tundra to view polar bears and other Arctic wildlife, up-close-and-personal, in their natural habitat.
- Indulging your taste buds with our tundra-inspired cuisine, complemented by select Canadian wines.
- Sky gazing! Our geographical location beneath the Aurora Oval offers the opportunity to enjoy the greatest light show on earth from within the lodge or out in our secure compound.
- Educational evening presentations by our lodge managers or naturalist guides about our Arctic ecosystems, landscape and lifestyle.
- Sunrises, sunsets and blue hour—our photo safaris give you ample opportunity to photograph the wildlife and landscapes of the Hudson Bay coast during the best light.

ITINERARY

DAY 1 - ANTICIPATION BUILDS DURING YOUR OVERNIGHT STAY IN WINNIPEG

Arrive in Winnipeg where you will enjoy a relaxing stay at our choice hotel, The Grand by Lakeview at the Winnipeg Airport. Your winter gear fitting and collection will take place at 5 pm prior to meeting the rest of your group at an orientation dinner hosted by a Churchill Wild representative.

DAY 2 - THE ADVENTURE BEGINS!

Arrive in Churchill by air where one of our expert staff will meet you at the airport and provide you with instructions of the morning transfer. You will then be transferred by fixed wing aircraft to Nanuk Polar Bear Lodge. This exciting 60-minute flight takes you over Wapusk National Park as well as the historic York Factory. Keep a sharp eye en-route for wildlife including the 'Great Ice Bears'.

Upon arrival, your hosts will provide a tour of the Lodge and get you settled into your room. A thorough orientation on travelling in polar bear country will be provided prior to any outings. Then it's time to assemble your cameras, hard drives, and tripods and start shooting.

DAY 3 TO 6 - NATURE TREKKING, POLAR BEARS AND MAGNIFICENT PHOTOGRAPHY

Each morning after a hot breakfast, your guides will outline a plan for the day's excursions. Note that to maximize photography time and opportunities, your daily schedule may be adjusted. Our Nanuk Polar Bear Lodge is a wildly rugged and remote location catering to the photographer willing to spend long hours in the field getting up close and personal, at ground level, with Arctic wildlife. The shoreline location of the lodge is ideal for photographing bears on snow and ice, and on clear nights offers excellent chances for northern lights photography.

After appetizers and another one of our signature meals, evenings are spent near the fireplace downloading images, sharing the day's adventures, or taking in an informative lecture or slide show.

Bedtime is at your leisure and you can rest easy knowing you won't miss out on anything. Our staff monitor the compound and skies and will rouse you if the aurora or a nocturnal polar bear make an appearance.

DAY 7 - BACK TO WINNIPEG

After another hearty Lodge breakfast, we will begin air transfers back to Churchill. Have your cameras ready for the return flight as it affords excellent opportunities for great aerial shots.

Back in Churchill, you'll spend the day with one of our tour guides exploring the town and surrounding area and learning about its rich history as a seaport and ex-military base. Your tour will include stops such as the Parks Canada exhibit, the Itsanitaq Museum, and the Polar Bear Jail. Along the way, your guide will point out murals that were commissioned in 2016 as part of the SeaWalls mural festival. Before a group dinner, your guide will give you free time to shop for last-minute souvenirs at the unique gift stores in Churchill.

Your flight south to Winnipeg will take place this evening. Upon arrival, collect your bags, head out of the arrivals doors and back to The Grand Hotel.

DAY 8 - HOMEWARD BOUND

After a restful sleep you will pack your bags in preparation for your flight home.



ABOUT NANUK POLAR BEAR LODGE

Situated next to pristine Arctic waters on Hudson Bay, with Canada's Boreal Forest as its backyard, sits Nanuk Polar Bear Lodge, one of the National Geographic Unique Lodges of the World. The diverse ecosystem surrounding this cozy wilderness lodge is home to Canadian icons such as polar bears, black bears, wolves, and moose.

From the safety of the fence surrounding the Lodge, view the northern lights or get up-close-and-personal with the polar bears and other wildlife that meander past, as curious about you as you are about them.

Nanuk's eight guestrooms with en-suite bathrooms are housed in two guest wings connected to the main dining room/lounge area, each with a private sitting area that overlooks the Bay.

After a long day trekking the tundra, kick back in front of our lounge's fireplace and enjoy an informative presentation by our guides, or simply relax and enjoy conversations with new friends.

YOUR ADVENTURE INCLUDES: Your safari includes all air and ground transfers between Winnipeg and our lodge, winter pants, boots and parka and accommodations.

- Day 1: Dinner
- Day 2 to 7: Breakfast, Lunch, Dinner
- Day 8: None

Prices are subject to taxes of 8.5%.

Single guests can sign up to share a room with another person of the same gender at the regular rate per person based on double occupancy.

2023 Dates



8 DAY TRIPS: October 25 – November 1 and November 11 – 18, 2023

Dates	Lodge	Availability	
October 25 - November 1, 2023	Nanuk Polar Bear Lodge	TWO ROOMS AVAILABLE	<input type="text"/>
October 30 - November 5, 2023	Nanuk Polar Bear Lodge	ONE ROOM AND ONE FEMALE SHARE AVAILABLE	<input type="text"/>
November 3 -9, 2023	Nanuk Polar Bear Lodge	LIMITED AVAILABILITY	<input type="text"/>
November 7 - 13, 2023	Nanuk Polar Bear Lodge	LIMITED AVAILABILITY	<input type="text"/>
November 11 - 18, 2023	Nanuk Polar Bear Lodge	SOLD OUT	<input type="text"/>

2023 Rates

<p>Price (per person)</p> <p>\$15,195 CAD (7 day)</p> <p>\$16,595 CAD (8 day)</p> <p>+ taxes and gratuity</p>	<p>Single Private Room</p> <p>\$28,195 CAD(7 day)</p> <p>\$30,695 CAD(8 day)</p> <p>+ taxes and gratuity</p>	<p>Children</p> <p>\$13,695 CAD (7 day)</p> <p>\$14,995 CAD (8 day)</p> <p>+ taxes and gratuity</p>
---	--	---

2024 Dates



8 DAY TRIPS: October 25 – November 1 and November 11 – 18, 2024

Dates	Lodge	Availability	
October 25 - November 1, 2024	Nanuk Polar Bear Lodge	AVAILABLE	<input type="text"/>
October 30 - November 5, 2024	Nanuk Polar Bear Lodge	AVAILABLE	<input type="text"/>
November 3 - 9, 2024	Nanuk Polar Bear Lodge	AVAILABLE	<input type="text"/>
November 7 - 13, 2024	Nanuk Polar Bear Lodge	AVAILABLE	<input type="text"/>
November 11 - 18, 2024	Nanuk Polar Bear Lodge	SOLD OUT	<input type="text"/>

2024 Rates

Price (per person)	Single Private Room	Children
\$15,995 CAD (7 day) \$17,495 CAD (8 day)	\$29,595 CAD(7 day) \$32,395 CAD(8 day)	\$14,395 CAD (7 day) \$15,795 CAD (8 day)
+ taxes and gratuity	+ taxes and gratuity	+ taxes and gratuity

2025 Dates

Churchill Wild reserves the right to change any published 2025 Rates via increase or decrease. Maximum 5% increase over quoted rates. No increase will be applied if invoice is paid in full.



8 DAY TRIPS: October 25 – November 1 and November 11 – 18, 2024

Dates	Lodge	Availability	
October 25 - November 1, 2025	Nanuk Polar Bear Lodge	AVAILABLE	<input type="text"/>
October 30 - November 5, 2025	Nanuk Polar Bear Lodge	AVAILABLE	<input type="text"/>
November 3 - 9, 2025	Nanuk Polar Bear Lodge	AVAILABLE	<input type="text"/>
November 7 - 13, 2025	Nanuk Polar Bear Lodge	AVAILABLE	<input type="text"/>
November 11 - 18, 2025	Nanuk Polar Bear Lodge	THREE ROOMS AVAILABLE	<input type="text"/>

2025 Rates

<p><i>Price (per person)</i></p> <p>\$16,795 CAD (7 day) \$18,395 CAD (8 day)</p> <p>+ taxes and gratuity</p>	<p><i>Single Private Room</i></p> <p>\$31,095 CAD(7 day) \$34,095 CAD(8 day)</p> <p>+ taxes and gratuity</p>	<p><i>Children</i></p> <p>\$15,095 CAD (7 day) \$16,595 CAD (8 day)</p> <p>+ taxes and gratuity</p>
---	--	---

Prices are subject to taxes of 8.5%. Children from ages 8 to 12 qualify for the child rate.

* Single guests can sign up to share a room with another person of the same gender at the regular rate per person based on double occupancy. If a single guest prefers to have a private room option we also have a single private room rate as listed above. This rate guarantees a private room at the Lodge as well as at the hotels required within the package.

Inclusions

- Roundtrip airfare between Winnipeg and Churchill, Manitoba
- Roundtrip airfare between Churchill and Nanuk Polar Bear Lodge
- Two nights' accommodations in Winnipeg
- Four/five nights' lodge accommodations
- All meals, excursions and guide services while in Churchill and at the Lodge
- Winter gear*

*The winter gear we provide is designed to fit guests from child to adult. Boot sizes larger than a men's size 13 or a very small child are customized sizes that we do not provide. Additionally, guests over 6'4" may be required to bring their own gear as we may not have clothing sizes to fit.

Not Included

- Taxes and gratuities

NANUK POLAR BEAR LODGE

WHERE POLAR BEARS MEET BLACK BEARS

Situated next to pristine Arctic waters on Hudson Bay with Canada's Boreal Forest as its backyard sits Nanuk Polar Bear Lodge, our most remote wilderness ecolodge.

The diverse ecosystem surrounding Nanuk is home to wildlife such as polar bears, black bears, wolves, and moose. Keep your eyes open for these and other Canadian icons during your daily treks out from the lodge!

From the safety of the fence surrounding the Lodge, view the northern lights or get up-close-and-personal with the polar bears and other wildlife that meander past, as curious about you as you are about them.

Relax in the cozy sitting area outside your guestroom or curl up in front of the fire in our main lounge overlooking the Bay. After a long day of walking with wildlife, you'll enjoy the casual atmosphere as you relax and enjoy conversations with fellow adventurers.



Location Specifics

250 KM SOUTH OF CHURCHILL BY PLANE



Highlights:

- Walking safaris and low-impact ATV tours to view polar bears, wolves, moose, black bears and more
- Northern lights viewing
- Photography tours (select departures)
- Polar bear den emergence expedition (March)
- Wellness retreats (September)
- Fly-fishing (September)
- Informative presentations about our wildlife, wilderness, and history
- Tundra-inspired meals prepared by on-site chefs



Features



Map + Location

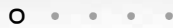


Photo Gallery

FEATURES



- › Eight guestrooms (queen, king, twin and family rooms), each with their own ensuite washroom
- › Cozy common area with fireplace
- › Fenced compound surrounding the lodge
- › Outdoor viewing tower and decks
- › Library
- › Gift shop
- › Full-service meals
- › 24h electricity via solar power, natural gas, and wood heat
- › Radio/Telephone
- › Satellite wi-fi



Features

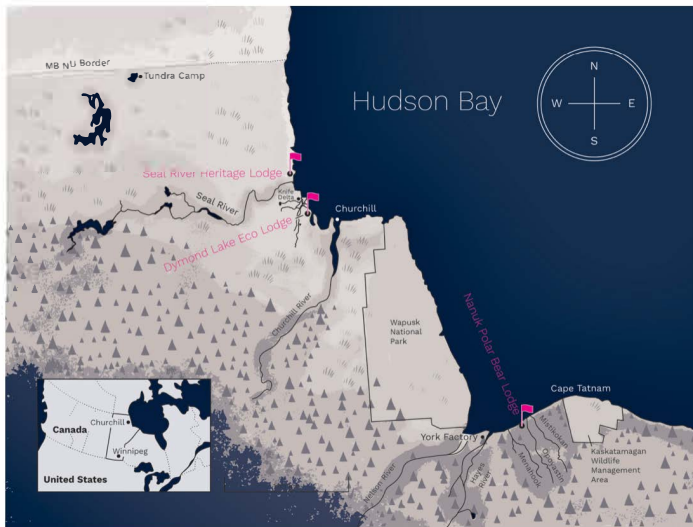


Map + Location



Photo Gallery

MAP + LOCATION



Nanuk Polar Bear Lodge is located 250 km southeast of Churchill, Manitoba on the Hudson Bay coast near the historic York Factory.

Nanuk Polar Bear Lodge overlooks the Arctic Ocean, has the Boreal Forest as its backyard, and is located along the Mississippi Migratory Flyway.

[VIEW ON GOOGLE MAPS](#)

PHOTO GALLERY



POLAR BEAR PHOTO SAFARI



October - November



Seal River Heritage Lodge



PACKAGE OVERVIEW

This safari is a must-do for professional and aspiring photographers. Photographic subjects include polar bears, Arctic fox and Arctic hare while stunning sea ice adds to the experience. The landscape changes daily as ice starts to form along the shoreline, and early morning light reflecting off the freshly fallen snow makes for beautiful images. Anticipating the northern lights adds to the adventure.

HIGHLIGHTS

- Daily, guided hikes across the tundra to view polar bears and other Arctic wildlife, up-close-and-personal, in their natural habitat.
- Indulging your taste buds with our tundra-inspired cuisine, complemented by select Canadian wines.
- Sky gazing! Our geographical location beneath the Aurora Oval offers the opportunity to enjoy the greatest light show on earth from within the lodge or out in our secure compound.
- Educational evening presentations by our lodge managers or naturalist guides about our Arctic ecosystems, landscape and lifestyle.
- Sunrises, sunsets and blue hour—our photo safaris give you ample opportunity to photograph the wildlife and landscapes of the Hudson Bay coast during the best light.

ITINERARY

DAY 1: ANTICIPATION BUILDS DURING YOUR OVERNIGHT STAY IN WINNIPEG

Arrive in Winnipeg where you will enjoy a relaxing stay at our choice hotel, The Grand by Lakeview at the Winnipeg Airport. Your winter gear fitting and collection will take place at 5 pm prior to meeting the rest of your group at an orientation dinner hosted by a Churchill Wild representative.

DAY 2 - THE ADVENTURE BEGINS!

Arrive in Churchill by air where our expediter will meet you at the airport. You will then be transferred by fixed wing aircraft to Seal River Heritage Lodge. This exciting flight takes you out over the historic Churchill River, and then northwest up the rugged Hudson Bay coast. Keep a sharp eye en-route for wildlife including the 'Great Ice Bears'.

Upon arrival, your hosts will provide a tour of the Lodge and get you settled into your room. A thorough orientation on travelling in polar bear country will be provided prior to your first outings.

DAY 3 TO 5 - NATURE TREKKING, POLAR BEARS AND MAGNIFICENT PHOTOGRAPHY

Each morning your guides will outline a plan for the day's excursion, and after a hearty breakfast, you'll head out, cameras in hand, in search of wildlife. This safari caters to the wildlife photographer dedicated to documenting Arctic wildlife, up-close-and-personal, so mealtimes will often be adjusted to take advantage of the encounter taking place. Your photos will have stunning backdrops with the sea and/or snowy landscapes surrounding the Lodge.

Scroll through the day's photos during appetizer hour before enjoying one of our signature dinners. Then, top up your wine glass and head to the lounge, cozy up in front of the fireplace and enjoy a presentation by one of our team members.

Bedtime is at your leisure and you can rest easy knowing you won't miss out on anything. Our staff monitor the compound and skies and will rouse you if the aurora or a nocturnal polar bear make an appearance.

DAY 6 - BACK TO WINNIPEG

After another hearty Lodge breakfast, we will begin air transfers back to Churchill. Have your cameras ready for the return flight as it affords excellent opportunities for great aerial shots.

Back in Churchill, you'll spend the day with one of our tour guides exploring the town and surrounding, learning about its rich history as a seaport and ex-military base. Your tour will include stops such as the Parks Canada exhibit, the Itsanitaq Museum, and the Polar Bear Jail. Along the way, your guide will point out murals that were commissioned in 2016 as part of the SeaWalls mural festival. Before a group dinner, your guide will give you free time to shop for last-minute souvenirs at the unique gift stores in Churchill.

Your flight south to Winnipeg will take place this evening. Upon arrival, collect your bags, head out of the arrivals doors and back to The Grand Hotel.

DAY 7 - HOMEWARD BOUND

After a restful sleep you will pack your bags in preparation for your flight home.



ABOUT SEAL RIVER HERITAGE LODGE

Perched on the rugged coast of Hudson Bay lies Seal River Heritage Lodge, a veritable oasis on the tundra and one of the National Geographic Unique Lodges of the World. Located near the Seal River Estuary, this property is in a prime location for observing polar bears as they wander the coast during summer and fall, waiting for the Bay to freeze, and for viewing beluga whales in July and August.

The fenced-in compound, viewing platforms and tower lend themselves to unique photography opportunities for northern lights and the wildlife that approach to check out the sights, sounds and smells of the Lodge.

Seal River has eight, double guestrooms in a quiet guest wing, each with an en-suite bathroom.

Our cozy lounge, complete with fireplace and large picture windows overlooking the Bay, is the perfect place to relax with a glass of wine, sharing photos or talking with new friends.

YOUR ADVENTURE INCLUDES: Your safari includes all air and ground transfers between Winnipeg and our lodge, winter pants, boots and parka and accommodations.

- Day 1: Dinner
- Day 2 to 6: Breakfast, Lunch, Dinner
- Day 7: None

Prices are subject to taxes of 8.5%.

Single guests can sign up to share a room with another person of the same gender at the regular rate per person based on double occupancy.

2023 Dates



Dates	Lodge	Availability
October 21 - 27, 2023	Seal River Heritage Lodge	LIMITED AVAILABILITY
October 25 - 31, 2023	Seal River Heritage Lodge	LIMITED AVAILABILITY
October 29 - November 4, 2023	Seal River Heritage Lodge	AVAILABLE
November 2 - 8, 2023	Seal River Heritage Lodge	LIMITED AVAILABILITY
November 6 - 12, 2023	Seal River Heritage Lodge	Shoot the Light – Charles Glatzer \$16,695 CAD 3 rooms available
November 10 - 16, 2023	Seal River Heritage Lodge	FULL LODGE BOOKING AVAILABLE

2023 Rates

Price (per person)
\$15,195 CAD
+ taxes and gratuity

Single Private Room
\$28,195 CAD
+ taxes and gratuity

Children
\$13,695 CAD
+ taxes and gratuity

2024 Dates



Dates	Lodge	Availability
October 21 - 27, 2024	Seal River Heritage Lodge	AVAILABLE
October 25 - 31, 2024	Seal River Heritage Lodge	AVAILABLE
October 29 - November 4, 2024	Seal River Heritage Lodge	SOLD OUT
November 2 - 8, 2024	Seal River Heritage Lodge	SOLD OUT
November 6 - 13, 2024	Seal River Heritage Lodge	SOLD OUT
November 11 - 17, 2024	Seal River Heritage Lodge	AVAILABLE
November 15 - 21, 2024	Seal River Heritage Lodge	AVAILABLE

2024 Rates

Price (per person)

\$15,995 CAD

+ taxes and gratuity

Single Private Room

\$29,595 CAD

+ taxes and gratuity

Children

\$14,395 CAD

+ taxes and gratuity

2025 Dates

Churchill Wild reserves the right to change any published 2025 Rates via increase or decrease.
Maximum 5% increase over quoted rates. No increase will be applied if invoice is paid in full.



Dates	Lodge	Availability
October 21 - 27, 2025	Seal River Heritage Lodge	AVAILABLE
October 25 - 31, 2025	Seal River Heritage Lodge	AVAILABLE
October 29 - November 4, 2025	Seal River Heritage Lodge	AVAILABLE
November 2 - 8, 2025	Seal River Heritage Lodge	AVAILABLE
November 6 - 13, 2025	Seal River Heritage Lodge	SOLD OUT
November 11 - 17, 2025	Seal River Heritage Lodge	AVAILABLE
November 15 - 21, 2025	Seal River Heritage Lodge	AVAILABLE

2025 Rates

Price (per person)

\$16,795 CAD

+ taxes and gratuity

Single Private Room

\$31,095 CAD

+ taxes and gratuity

Children

\$15,095 CAD

+ taxes and gratuity

Prices are subject to taxes of 8.5%. Children from ages 8 to 12 qualify for the child rate.

*Single guests can sign up to share a room with another person of the same gender at the regular rate per person based on double occupancy. If a single guest prefers to have a private room option we also have a single private room rate as listed above. This rate guarantees a private room at the Lodge as well as at the hotels required within the package.

Inclusions

- Roundtrip airfare between Winnipeg and Churchill, Manitoba
- Roundtrip airfare between Churchill and Seal River Heritage Lodge
- Two nights' accommodations in Winnipeg
- Four nights' lodge accommodations
- All meals, excursions and guide services while in Churchill and at the Lodge
- Winter gear*

*The winter gear we provide is designed to fit guests from child to adult. Boot sizes larger than a men's size 13 or a very small child are customized sizes that we do not provide. Additionally, guests over 6'4" may be required to bring their own gear as we may not have clothing sizes to fit.

Not Included

- Taxes and gratuities
-



WALK WITH POLAR BEARS AT THE EDGE OF THE ARCTIC

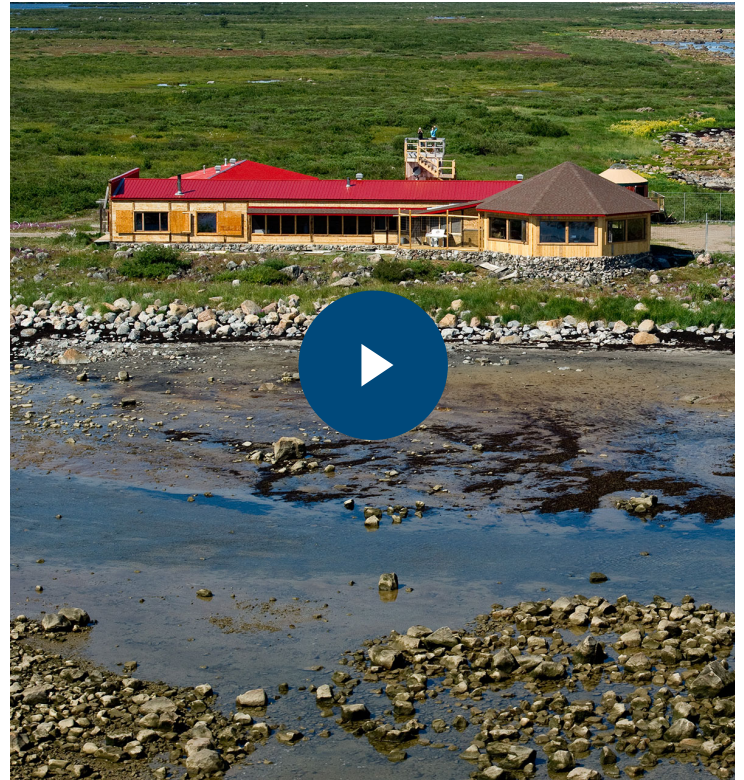
Perched on the rugged coast of Hudson

Bay lies Seal River Heritage Lodge, one of the early members in the National Geographic Unique Lodges of the World collection.

This lodge is in a prime location for observing polar bears as they wander the coast during summer and fall waiting for the Bay to freeze. Its location near the Seal River Estuary also makes it ideal for viewing beluga whales in July and August.

Our fenced-in compound, viewing platforms and tower lend themselves to unique photography opportunities for northern lights and the wildlife that approach to check out the sights, sounds and smells of the Lodge.

After a day of trekking the tundra, relax in our cozy lounge, watching for wildlife through expansive picture windows, sharing photos or talking with new friends.



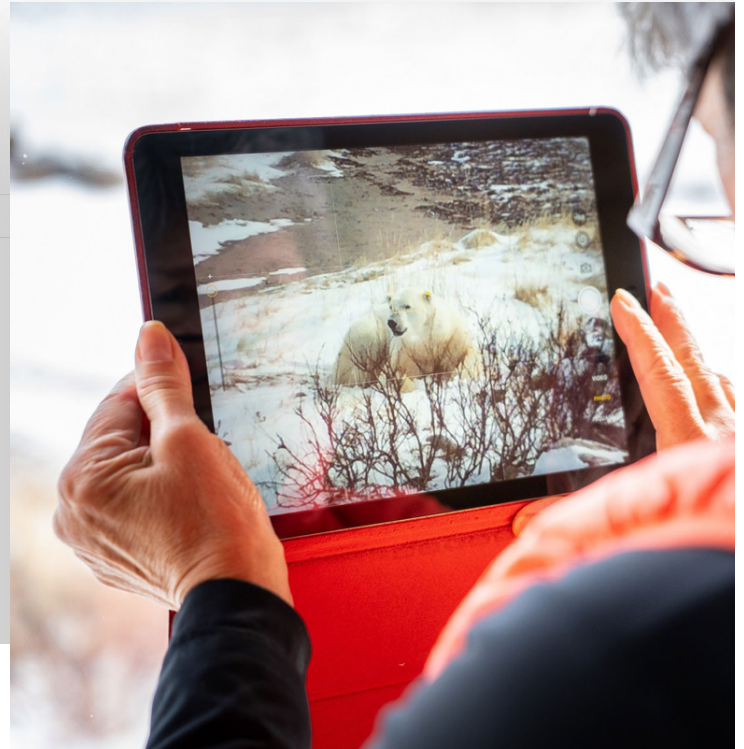
Highlights:

- Walking safaris to view polar bears, sik-sik, Arctic hare, Arctic fox, and more
- Marine tours to view beluga whales
- Northern lights viewing
- Photography tours (select departures)
- Floe edge expedition (April)
- Informative presentations about our wildlife, wilderness, and history
- Tundra-inspired meals prepared by on-site chefs
- Ecolodge accommodations with all the comforts of home – [Learn more.](#)

Location Specifics

60 KM NORTH OF CHURCHILL BY
PLANE

59° 09' 09.87" N / 94° 46' 54.87 " W





Features



Map + Location



Photo Gallery

FEATURES



- › Eight guestrooms (queen, king, twin and family rooms), each with their own ensuite washroom
- › Cozy common area with fireplace
- › Fenced compound surrounding the lodge
- › Outdoor viewing tower and decks
- › Library
- › Gift shop
- › Full-service meals
- › 24h electricity via solar power, natural gas, and wood heat
- › Radio/Telephone
- › Satellite wi-fi



Features

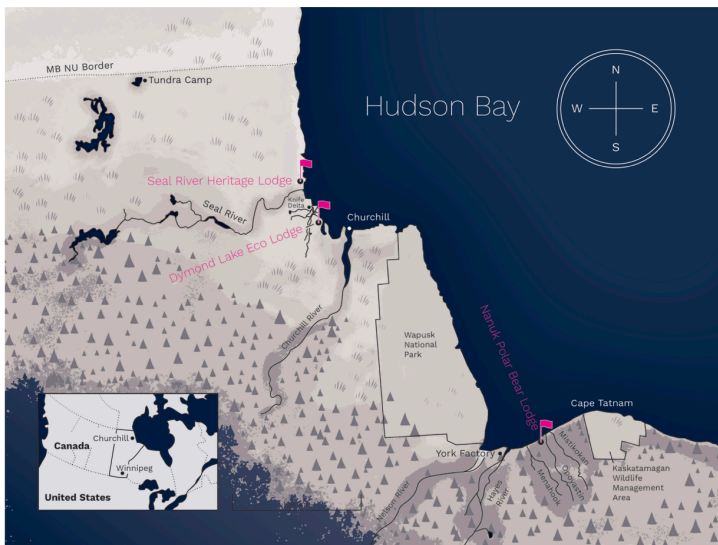


Map + Location



Photo Gallery

MAP + LOCATION

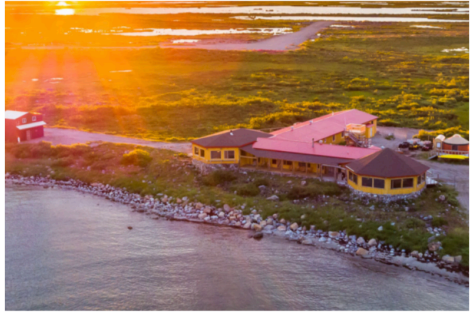


Seal River Heritage Lodge is located 60 km and 30 minutes north of Churchill by plane, deep in the heart of polar bear territory.

Ideally situated on the shores of Hudson Bay near the Seal River estuary, where thousands of beluga whales gather every summer, Seal River Heritage Lodge is home to our Birds, Bears and Belugas adventure, a Canadian Signature Experience that takes place in July and August, as well as to our Polar Bear Photo Safari in October and November and our Arctic Safari in September.

[VIEW ON GOOGLE MAPS](#)

PHOTO GALLERY





Schiffs- und Flug- Expeditionen
in Arktis und Antarktis

weitere Touren von Churchill Wild

Details auf Anfrage

Direkt-Angebote

**ab-bis Kanada für individuelle
Planungen**

**alle Abfahrten der Saison inkl.
englischsprachiger Termine**



CHURCHILL WILD

Arctic Safari Guide



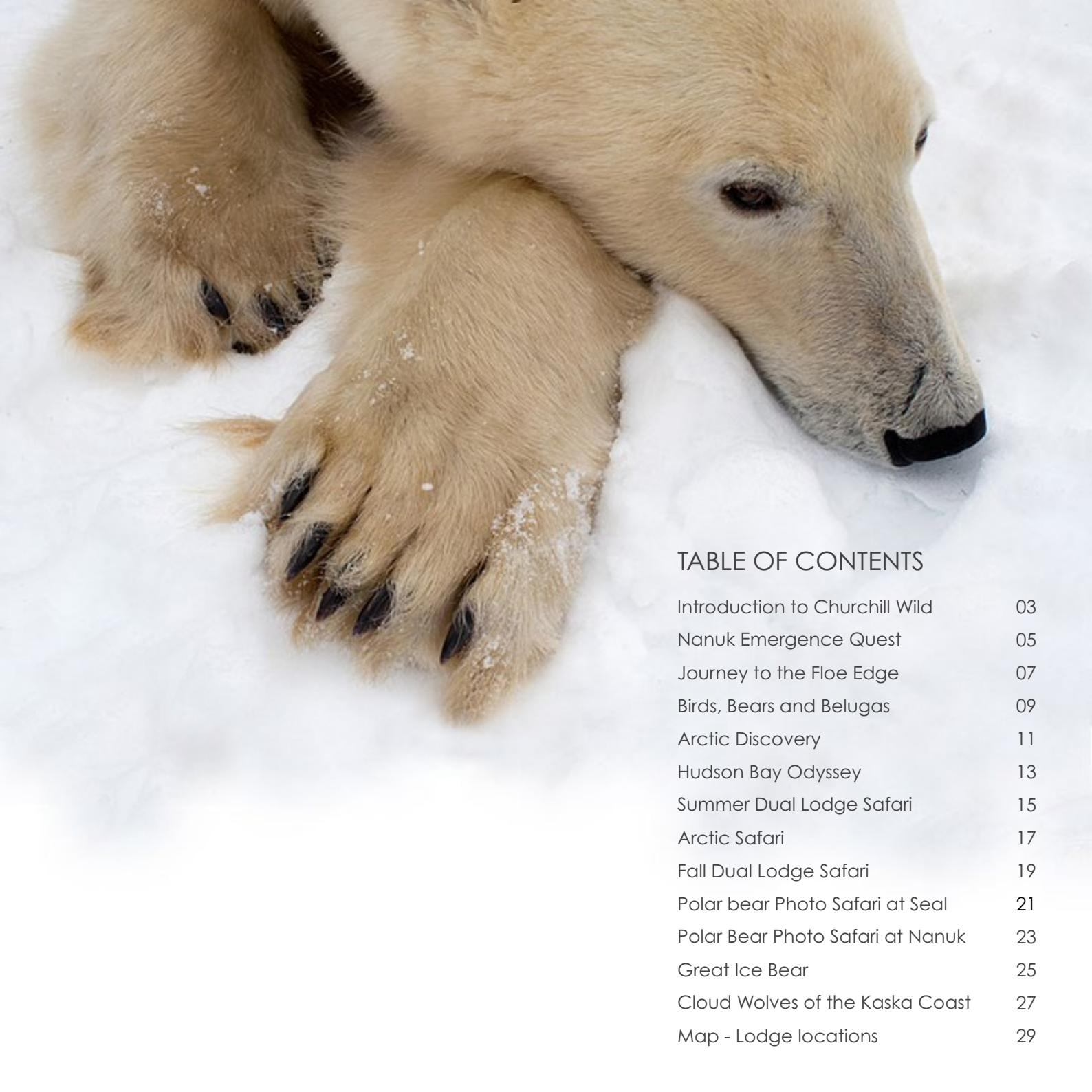


TABLE OF CONTENTS

Introduction to Churchill Wild	03
Nanuk Emergence Quest	05
Journey to the Floe Edge	07
Birds, Bears and Belugas	09
Arctic Discovery	11
Hudson Bay Odyssey	13
Summer Dual Lodge Safari	15
Arctic Safari	17
Fall Dual Lodge Safari	19
Polar bear Photo Safari at Seal	21
Polar Bear Photo Safari at Nanuk	23
Great Ice Bear	25
Cloud Wolves of the Kaska Coast	27
Map - Lodge locations	29

THE WILDEST PLACE ON EARTH

If you've ever dreamt of flying over the spectacular Arctic tundra to a remote lodge, walking the Hudson Bay coastline in small groups to view polar bears, and returning to your lodge to unwind by a fireplace before dining on delicious fare...Churchill Wild is your dream come true.

Here, among the wilds of northern Manitoba you'll find diversity of wildlife, the brilliance of the northern lights, and stunning vistas.

Each of the safaris in our portfolio is designed to delight your senses and take you on a profound and unforgettable journey into the Arctic wilderness.





HERE'S WHAT TRULY SETS CHURCHILL WILD APART:

Canada's Most Exclusive Polar Bear Ecolodges

- Churchill Wild is the only company on the planet specializing in ground level walking tours through the polar bear inhabited remote regions of Arctic Canada. We provide access that presents wildlife enthusiasts and photographers with the opportunity of a lifetime amid these stars of the Arctic.
- We offer exclusive access to unique polar bear viewing experiences in both summer & the traditional fall season. We have a 99% success rate in polar bear sightings by land and sea.
- Churchill Wild is family owned and operated, evident in the care we put into every detail of your experience. With over 100 years of Arctic travel experience in the family, no one knows the Hudson Bay coast and surrounding regions like we do.
- Beyond incredible polar bears we have exclusive areas for other wildlife viewing including beluga whales, wolves, moose, black bears, Arctic fox and more.
- Churchill Wild's culinary experience is second to none, featuring a menu of tundra-inspired cuisine pulled from the pages of the best-selling cookbook series *Blueberries & Polar Bears*, penned by our matriarch, Helen Webber, and her best friend Marie Woolsey.



NANUK EMERGENCE QUEST

Nanuk Polar Bear Lodge



NANUK EMERGENCE QUEST

The goal of this expedition is to find and observe female polar bears and their newborn cubs in the area of Cape Tatnum on Manitoba's Hudson Bay coast. This experience is undoubtedly the most rugged of our adventures and not for the faint of heart or weak of knee as the physical participation level is very high.

This coastline has the highest concentration of moose in the province and a very strong "attending" wolf population. Foxes, wolverine and pine marten also frequent the coast and might be seen. Aurora borealis sightings are some of the best in the world here, so be prepared for a few sleepless nights!


Other activities may include igloo building, wolf howls, soapstone carving and snowshoeing expeditions.

Package includes return airfare from Winnipeg to Thompson or Churchill and Nanuk Polar Bear Lodge, eleven nights at the lodge and two nights in Winnipeg. All meals, excursions, and guide services while in Churchill and at the Lodge. *Winter gear is included.

*The winter gear we provide is designed to fit guests from child to adult. Boot sizes larger than a men's size 13 or a very small child are customized sizes that we do not provide. Additionally, guests over 6'4" may be required to bring their own gear as we may not have clothing sizes to fit.

 February - March

 Length: 14 days, 13 nights

 Price: \$17,895 CAD pp + tax



JOURNEY TO THE FLOE EDGE

Seal River Heritage Lodge



JOURNEY TO THE FLOE EDGE

This rugged, small-group expedition will engage and challenge all your senses as you explore the floe edge where land fast ice meets the open waters of Hudson Bay. Witness the evolution of the sea ice as the tide ebbs and flows, shifting and breaking down towering ridges.

The Arctic is a destination that conjures up images of long sunny days, icy landscapes, and endless sunsets. It's a place so untamed, so boundless, and so alluring that your inner explorer can't help but be awakened. Hop in a sea kayak and glide through the frigid waters, navigating around ice floes and ridges. Take a fat-tire bike for a ride along the floe edge or settle into a dogsled for an authentic Arctic experience.

As you stand at the threshold of open water, you may even experience the visual phenomenon known as a Fata morgana. This very rare type of mirage occurs when light rays bend when passing through the space where cool ocean water meets the warmer air above.

Limited to 12 intrepid guests this package includes return airfare from Winnipeg to Churchill and Seal River Heritage Lodge, seven nights at the lodge and two nights in Winnipeg. All meals, excursions, and guide services while in Churchill and at the Lodge.

*The winter gear we provide is designed to fit guests from child to adult. Boot sizes larger than a men's size 13 or a very small child are customized sizes that we do not provide. Additionally, guests over 6'4" may be required to bring their own gear as we may not have clothing sizes to fit.

 April - May

 Length: 10 days, 9 nights

 Price: \$17,295 CAD pp + tax



BIRDS, BEARS & BELUGAS

Seal River Heritage Lodge




BIRDS, BEARS & BELUGAS

Birds, Bears & Belugas has become recognized as the most diverse wildlife viewing program in Canada. Your adventure takes place at our exclusive fly-in ecolodge, Seal River Heritage Lodge in the heart of Arctic summer.


With a backdrop of tundra alive with flora and fauna, this summertime adventure combines the thrill of seeing and hearing beluga whales and the adrenaline rush of ground-level polar bear viewing. Migratory and shorebirds peppering the sky and coastline provide a serene reminder that you cannot get any closer to nature than this.

A short boat ride from the Lodge brings you to the Seal River Estuary where beluga whales calve each summer. This, coupled with polar bears and the wide range of other wildlife in the area, make the 8-day Birds, Bears & Belugas Adventure one of the most adventure-rich experiences offered anywhere in the world.

Package includes return airfare from Winnipeg to Churchill and Seal River Heritage Lodge, five nights at the lodge and two nights in Winnipeg. All meals, excursions, and guide services while in Churchill and at the Lodge.

 July - August

 Length: 8 days, 7 nights

 Price: \$14,895 CAD pp + tax



ARCTIC DISCOVERY
Nanuk Polar Bear Lodge



ARCTIC DISCOVERY


Arctic Discovery is your immersion into one of the planet's last untamed wilderness areas. Our Nanuk Polar Bear Lodge boasts unrivaled access to polar bears and their coastal habitat. This area's diverse and abundant wildlife combined with untouched terrain make Arctic Discovery one of our most loved trips.

Your safari experience starts in Winnipeg where you'll be introduced to the regions that you'll soon explore at the Manitoba Museum's artfully curated Arctic Gallery.


Churchill is the location of your first wildlife encounter! Here, you'll have your first encounter with one of the many uniquely adapted mammals of the Arctic ecosystem, the beluga whale. Family pods will regard you curiously, and sing and chatter, while you float among them in your kayak at the mouth of the Churchill River.

You'll be transported to Nanuk Polar Bear Lodge deep in the heart of polar bear country. While at Nanuk, you'll enjoy coastal exploration to the tidal flats and Hudson Bay shoreline using a combination of people power (walking!) and our specially outfitted all-terrain vehicles. This safari will leave you with a deep appreciation for this stunning region, rich with history, wildlife, and breathtaking scenery.

Package includes return airfare from Winnipeg to Churchill and Nanuk Polar Bear Lodge, two nights in Winnipeg, two nights in Churchill, and four nights at the lodge. All meals, excursions, and guide services while in Churchill and at the Lodge.

 July - August

 Length: 9 days, 8 nights

 Price: \$14,895 CAD pp + tax



HUDSON BAY ODYSSEY

Nanuk Polar Bear Lodge



HUDSON BAY ODYSSEY


This exclusive adventure will take place on the coast of Hudson Bay, within the Kaskatamagan Wildlife Management Area at Nanuk Polar Bear Lodge. This property is situated in an ultra-remote location, near observed denning sites.

A two-hour plane journey north of Winnipeg takes you to an area so remote it hasn't changed in thousands of years. During your breathtaking flight you will fly over the Northern Taiga Forest and follow the mighty Nelson River to the plains and tidal flats of Hudson Bay where beluga whales make their summer home.

You will also pass over York Factory, a trading post that was permanently established in 1684 by Governor George Geyer of the Hudson's Bay Company. This was the beginning of Canada's fur trade history.

Nanuk's location is in an area of diverse and abundant wildlife and daily excursions may have you photographing polar bears, black bears, wolves, moose or one of many migratory birds that frequent the area.

Package includes return airfare from Winnipeg to Churchill and Nanuk Polar Bear Lodge, two nights in Winnipeg and four nights at the lodge. All meals, excursions, and guide services while in Churchill and at the Lodge.

 August - September

 Length: 7 days, 6 nights

 Price: \$13,295 CAD pp + tax



SUMMER DUAL LODGE SAFARI

Seal River Heritage Lodge & Nanuk Polar Bear Lodge



SUMMER DUAL LODGE SAFARI

Two lodges, two times the wildlife encounters! Immerse yourself in the beauty and diversity of the western Hudson Bay with our Summer Dual Lodge Safari. This one-of-a-kind safari includes four nights at Seal River Heritage Lodge for time with belugas and your first access to polar bears and finishes with four nights at Nanuk Polar Bear Lodge.

The summer months are a beautiful time on the Canadian tundra and traveling to two of our remote wilderness lodges will help you develop an appreciation for the distinctly unique terrain along the coastline. This incredible adventure will give you access to all that this diverse ecosystem has to offer which includes polar bears, black bears, beluga whales, wolves, moose, and a host of other wildlife.

Watch a polar bear wander through a field of a grass or go for a dip in the Hudson Bay! Stand beneath the Arctic sky and await the northern lights! This trip will be full of surreal and extraordinary experiences sure to stay with you long after you leave.

Package includes return airfare from Winnipeg to Churchill and the lodges, two nights in Winnipeg and eight nights at the lodges. All meals, excursions, and guide services while in Churchill and at the Lodge.



August - September



Length: 11 days, 10 nights



Price: \$20,995 CAD pp + tax



ARCTIC SAFARI

Seal River Heritage Lodge & Tundra Camp



ARCTIC SAFARI

Our Arctic Safari covers 20,000 km² of northern terrain and is filled with endless photo opportunities and exclusive experiences. Enjoy Seal River Heritage Lodge and expedition camping at our cozy Tundra Camp as we pamper you with world class service, guides, accommodations, and cuisine—truly the adventure of a lifetime.


Our National Geographic Creative photographer, Jad, will help you capture the incredible beauty and diversity of this wild Arctic region. The remoteness and logistical considerations of this safari make it an experience that only a handful of guests have the chance to partake in each year.

Your days will be focused on wildlife encounters and interpretive hikes across the rugged and colourful tundra terrain. In addition to the famed polar bear, keep your eyes open for wolves, Arctic fox, sik-siks, Arctic hare and hopefully northern lights!

Package includes return airfare from Winnipeg to Churchill and Seal River Heritage Lodge, two nights in Winnipeg, two nights at tundra camp, four nights at the lodge. All meals, excursions, and guide services while in Churchill and at the lodge.

 September

 Length: 9 days, 8 nights

 Price: \$17,095 CAD pp + tax



FALL DUAL LODGE SAFARI

Seal River Heritage Lodge & Nanuk Polar Bear Lodge



FALL DUAL LODGE SAFARI

On the Fall Dual Lodge Safari you'll have access to two populations of polar bears, wolves, moose, and more, as well as opportunities for spectacular northern lights photography.

You'll traverse more than 300 km of the rugged Hudson Bay coast during your adventure and spend eight nights total at two of our rustic luxurious ecolodges. Seal River Heritage Lodge and Nanuk Polar Bear Lodge are located on vastly different landscapes giving you a comprehensive education of the Hudson Bay ecosystem. You could find yourself in fall colours, or with snow on the ground, or somewhere in between.

Explore the area on foot or hop on one of our custom-built Tundra Rhinos for a different perspective. After a long day of trekking the tundra, relax by the fire and enjoy informative evening presentations on the local wildlife and culture from your naturalist guides. Fuel your adventure with tundra-inspired cuisine complete with wine pairings and mouth-watering desserts.


The photography opportunities in the Canadian Arctic are endless and this program is great for amateur and aspiring photographers. The diversity of the wildlife and stunning landscapes are sure to take your breath away.

Package includes return airfare from Winnipeg to Churchill and the lodges, two nights in Winnipeg and eight nights at the lodges. All meals, excursions, and guide services while in Churchill and at the Lodge.

*The winter gear we provide is designed to fit guests from child to adult. Boot sizes larger than a men's size 13 or a very small child are customized sizes that we do not provide. Additionally, guests over 6'4" may be required to bring their own gear as we may not have clothing sizes to fit.

 October

 Length: 11 days, 10 nights

 Price: \$22,095 CAD pp + tax



POLAR BEAR PHOTO SAFARI

Seal River Heritage Lodge



POLAR BEAR PHOTO SAFARI

Seal River Heritage Lodge

For nature loving photographers, this trip has it all: aerial tours, iconic northern wildlife, ample ground-level photography opportunities and phenomenal lighting.

There is something about the Arctic backdrop that brings photographers back time and again, dazzled by the experience of capturing polar bears on the snow during the day and shooting the transfixing northern lights at night.

Seal River Lodge is perched on an outcrop overlooking Hudson Bay and the sea ice formations seen here make for spectacular photo opportunities—with or without wildlife. Even though you'll be in polar bear country, a myriad of other Arctic animals such as Arctic fox and Arctic hare are on full display against this stunning backdrop. Like the famous tundra-inspired meals we serve, our Polar Bear Photo Safari has all the ingredients to make a lasting impression.

Package includes return airfare from Winnipeg to Churchill and Seal River Lodge, two nights in Winnipeg and four nights at the lodge. All meals, excursions, and guide services while in Churchill and at the Lodge.

*The winter gear we provide is designed to fit guests from child to adult. Boot sizes larger than a men's size 13 or a very small child are customized sizes that we do not provide. Additionally, guests over 6'4" may be required to bring their own gear as we may not have clothing sizes to fit.

 October - November

 Length: 7 days, 6 nights

 Price: \$15,195 CAD pp + tax



POLAR BEAR PHOTO SAFARI

Nanuk Polar Bear Lodge



POLAR BEAR PHOTO SAFARI

Nanuk Polar Bear Lodge

Following a similar itinerary as our Photo Safari at Seal River Lodge, this trip takes place along the southern shores of Hudson Bay and has many of the same elements: aerial tours, iconic northern wildlife, ample ground-level photography opportunities and phenomenal lighting.

Nanuk Lodge is on the edge of the boreal forest and offers a different breathtaking vista each time you look up. Even though you'll be in polar bear country, a myriad of other Arctic animals such as wolves, moose, and Arctic fox guest star on this safari. Like the famous tundra-inspired meals we serve, our Polar Bear Photo Safari has all the ingredients to make a lasting impression.

The frosty, snow-covered trees and willows create a beautiful backdrop for photography and the remoteness of this property inspire a deep connection to nature. Daytime wildlife encounters and the chance for aurora photography make this trip a favourite for photographers.

Both packages include return airfare from Winnipeg to Churchill and Nanuk Polar Bear Lodge. All meals, excursions, and guide services while in Churchill and at the Lodge.

*The winter gear we provide is designed to fit guests from child to adult. Boot sizes larger than a men's size 13 or a very small child are customized sizes that we do not provide. Additionally, guests over 6'4" may be required to bring their own gear as we may not have clothing sizes to fit.

 October - November

 Length: 7 days, 6 nights

 Price: \$15,195 CAD pp + tax

This package includes two nights in Winnipeg and four nights at the lodge.

 October - November

 Length: 8 days, 7 nights

 Price: \$16,595 CAD pp + tax

This package includes two nights in Winnipeg and five nights at the lodge.



GREAT ICE BEAR

Dymond Lake Ecolodge



GREAT ICE BEAR

The traditional polar bear season encompasses the months of October and November. During this time, the polar bears congregate on the coast in large numbers while waiting for the Hudson Bay to freeze. This allows them passage onto the Bay where they will feast on seals until the spring. Our Great Ice Bear Adventure takes place during this period of abundance.

Churchill Wild's mandate is to introduce people to the wonders of the Arctic with minimal environmental impact so the exploration of the coastline will be done almost entirely on foot. The animals appreciate this! Churchill is your starting point - home to less than 900 people but during bear season the population explodes. You'll be one of the few to escape those crowds with your journey to Dymond Lake Ecolodge.


You will fly 30 km north of Churchill to this exclusive polar bear lodge along the Hudson Bay coastline. Our remote location allows for a much wider range of wildlife viewing than would be possible in the town-based tours. Beyond the majestic ice bears, you may also see wolves, moose, Arctic foxes, ptarmigans (a furry-footed grouse), and snowy owls, to name a few. After your time at the Lodge you will be transferred back to Churchill to for a private Tundra Buggy® tour where you'll enjoy more time with the beautiful white bears.

Package includes return airfare from Winnipeg to Churchill and Dymond Lake Lodge, two nights in Winnipeg, three nights at the lodge and one night in Churchill. All meals, excursions, and guide services while in Churchill and at the Lodge.

*The winter gear we provide is designed to fit guests from child to adult. Boot sizes larger than a men's size 13 or a very small child are customized sizes that we do not provide. Additionally, guests over 6'4" may be required to bring their own gear as we may not have clothing sizes to fit.

 October - November

 Length: 7 days, 6 nights

 Price: \$14,395 CAD pp + tax



CLOUD WOLVES OF THE KASKA COAST

Nanuk Polar Bear Lodge



CLOUD WOLVES OF THE KASKA COAST

Answer the call of the wild wolves on our newest program and discover the thrill of tracking, watching, photographing, and studying these enigmatic creatures.

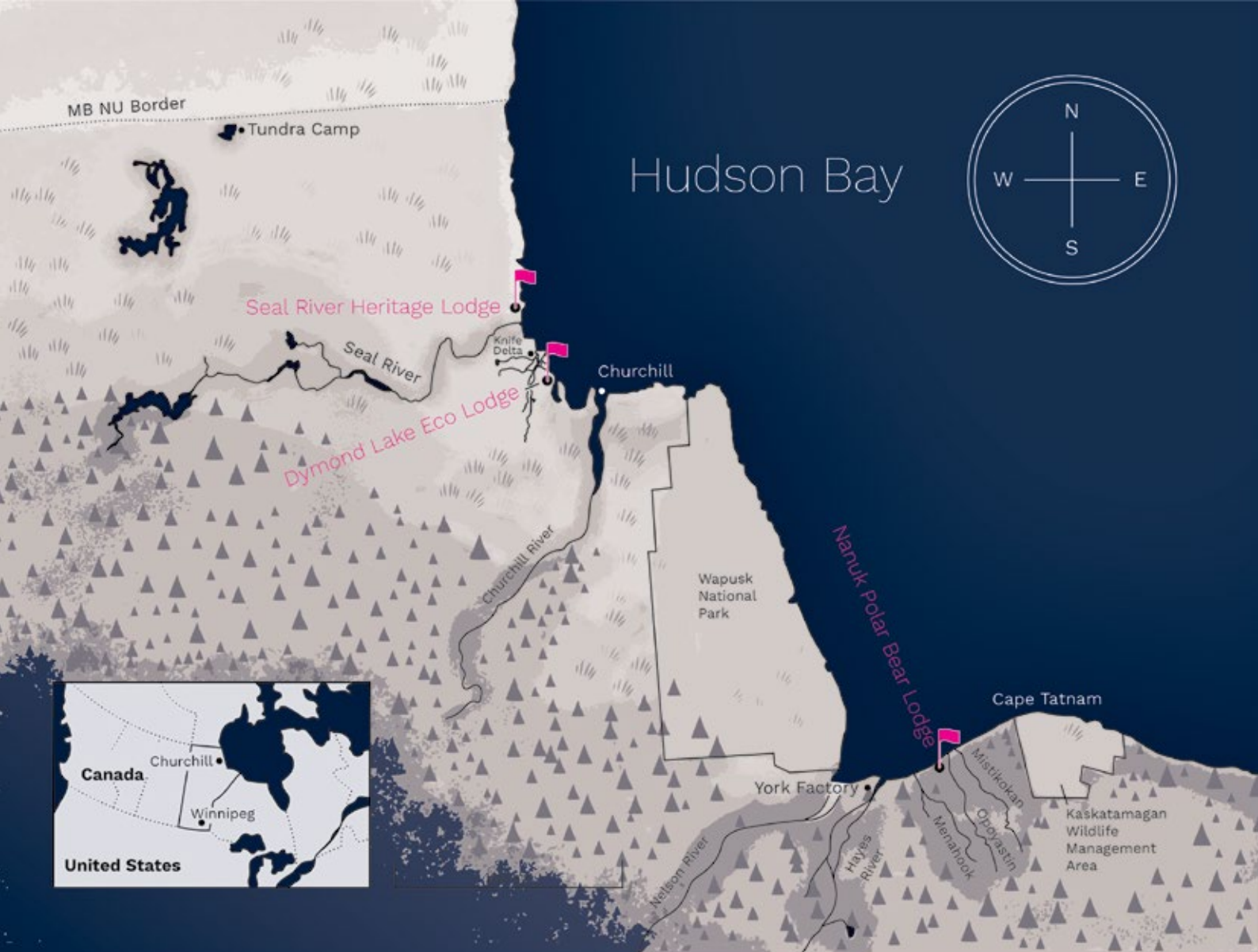
Whether you're a wolf lover dreaming of seeing and hearing them in the wild, a photographer chasing National Geographic-worthy images, or a naturalist craving field experience—or all three!—our nine-day cloud wolves expedition will take you on an unforgettable journey.

Our base is the beautiful Nanuk Polar Bear Lodge in the heart of the Kaska Coast of southern Hudson Bay, an uninhabited wilderness ten times the size of Yellowstone National Park. Far from civilization and never hunted, the resident packs of cloud wolves (*Canis lupus nubilus*) have no fear of humans, making for encounters and photography unrivalled anywhere else in the world.

Package includes return airfare from Winnipeg to Churchill and Nanuk Polar Bear Lodge, two nights in Winnipeg and seven nights at the lodge. All meals, excursions, and guide services while in Churchill and at the Lodge.

*The winter gear we provide is designed to fit guests from child to adult. Boot sizes larger than a men's size 13 or a very small child are customized sizes that we do not provide. Additionally, guests over 6'4" may be required to bring their own gear as we may not have clothing sizes to fit.

-  March & November
-  Length: 10 days, 9 nights
-  Price: \$20,995 CAD pp + tax



CHURCHILL WILD

THE WORLD'S NEXT GREAT SAFARI™



UNIQUE LODGES
OF THE WORLD™



POLAR ADVENTURES

Schiffs- und Flug- Expeditionen
in Arktis und Antarktis

OFFLINE-KATALOG-ANFORDERUNG

Sehr geehrte Reise-Interessenten. Vielen Dank für Ihr Interesse und den Download eines digitalen Kataloges im PDF-Format.

Gerne senden wir Ihnen zusätzlich bei weitergehendem Interesse die ausgewählten PDF-Inhalte als gedruckte Version auf dem Postweg.

Bitte nennen Sie unten den gewünschten Katalog und senden Sie dieses Formular per Post oder Fax an uns zurück.

Bitte senden Sie mir den aktuellen Katalog für folgendes Schiff/ Tour:

--

Bitte senden Sie den ausgewählten Katalog an folgende Adresse:

Vorname + Name

Telefonnummer

--	--

Strasse + Nr.

Faxnummer

--	--

PLZ + Wohnort

e-mail-Adresse

--	--

Bitte per Post an:

oder per Fax an 04131-54255

an POLARADVENTURES Schiffs- und Flug-Expeditionen in Arktis und Antarktis Heinrich-Böll-Str. 40 D-21335 Lüneburg
--

POLAR ADVENTURES

Schiffs- und Flug- Expeditionen in Arktis und Antarktis

**Unverbindliche Buchungsanfrage per Fax an 04131-54255 oder per Post an
Polaradventures, Heinrich-Böll-Str. 40, D-21335 Lüneburg, Deutschland**

Bitte unterbreiten Sie mir ein unverbindliches Angebot für folgende Leistungen:

- ☐ Veranstalter-Angebot mit Insolvenzversicherung nach deutschem Reiseveranstalterrecht + Preis in EUR
☐ Direkt-Angebot der ausländischen Reedereien (ausländ. Reiserecht + Preis in USD zum Tageskurs in EUR)

Schiffsname		
Reisename/ -Route		
Abfahrt von - bis (tt/mm - tt/mm/jj)		
Alternative Abfahrt (tt/mm - tt/mm/jj) (falls ausgebucht)		
Kabinenkategorie		
Alternative Kabinenkategorie (falls ausgebucht)		

- ☐ Doppelkabine ☐ Doppelkabine zur Einzelnutzung ☐ Halbe Doppelkabine zur Mitbenutzung

Zubringerflüge:

Abflughafen		
Hinflugdatum (tt/mm/jj)		
Rückflugdatum (tt/mm/jj)		
bevorzugte Airline		

☐ Economy-Class ☐ Business-Class

Zusätzliche Hotelübernachtungen:

Hotelname/Übernachtungsort		
Aufenthalt von - bis (tt/mm - tt/mm/jj)		
Hotelname/Übernachtungsort		
Aufenthalt von - bis (tt/mm - tt/mm/jj)		

Reiseversicherungen:

- ☐ keine
☐ Reiserücktrittskostenversicherung
☐ Komplettschutz (Reiserücktritts-, Kranken-, Unfall-, Gepäck- und Notfallversicherung)

Persönliche Angaben:

1. Reiseteilnehmer Vorname, Name / Geburtsdatum		
2. Reiseteilnehmer Vorname, Name / Geburtsdatum		

Angebot bitte:

<input type="checkbox"/> per Email an (Emailadresse)		
<input type="checkbox"/> per Fax an (Nummer)		
<input type="checkbox"/> per Post an (Vorname & Name) (Straße & Nr.) (PLZ & Wohnort)		