

POLAR ADVENTURES

Schiffs- und Flug- Expeditionen
in Arktis und Antarktis



Arktis Expeditionen POLARBÄREN-BEOBACHTUNG WATCHEE LODGE Winter Manitoba (Kanada)

POLARADVENTURES Schiffs- und Flug-Expeditionen in Arktis und Antarktis
Reiseagentur * Heinrich-Böll-Str. 40 * D-21335 Lüneburg * Deutschland
Tel +49-4131- 223474 Fax +49-4131-54255 infos@polaradventures.de www.polaradventures.de

POLAR ADVENTURES

Schiffs- und Flug- Expeditionen
in Arktis und Antarktis

Saison 2024 & 25

Direkt-Angebote

**ab-bis Winnipeg (Kanada)
für individuelle Planungen**



Wat'chee Lodge

Wat'chee Lodge ist eine wunderschön restaurierte Marinekommunikationsstation, die sich 300 Fuß hoch auf einem alten Strandwall befindet, 40 Meilen südlich von Churchill, MB. Kanada.

Die Hütte ist ein weltberühmtes Reiseziel für den abenteuerlustigen Naturforscher, den begeisterten Fotografen und all die Urlauber, die die erstklassigen Reisemöglichkeiten in der kanadischen Subantarktis erleben wollen.

Wat'chee bedeutet in der Sprache der Cree „ein Hügel bedeckt mit Bäumen mitten in der Tundra“. Wie eine Insel umgeben von der Tundra liegt die Wat'chee Lodge mitten im weltgrößten Gebiet, in dem Eisbären in Eishöhlen ihre Jungen zur Welt bringen, direkt angrenzend an den Wapusk National Park.

Von der Wat'chee Lodge hat man einen weiten Blick auf die gewaltigen Hudson Bay Ebenen, die sich bis zur Küste der Hudson Bay erstrecken, mit einseitigen Fichtenbäumen, Tundra Eishügeln, kleinen Seen und mit Weiden gesäumten Flösschen. Dies ist der Lebensraum des Moorschneehuhns, des Cape Churchill, von Karibuherden, dem Wolf, dem Polarfuchs und des Eisbären – dem größten Landraubtier der Welt.



Services der Wat'chee Lodge

Genießen Sie das einmalige Erlebnis, ein Schneehaus zu bauen oder mit Schneeschuhen eine Wanderung zu unternehmen. Probieren Sie unsere leckeren, traditionellen Gerichte der Aborigines – Karibu, Schneehuhn und Bannockbrot. Das Abendprogramm besteht aus Präsentationen über die Kultur der Aborigines, ebenso wie Slide Shows und Videos über das Churchill Gebiet. Wenn der Himmel klar ist, können Sie dem glanzvollen Lichterspiel der Polarlichter beiwohnen.

Die Tage auf der Hütte verbringen Sie damit, wild lebende Tiere der Umgebung aufzuspüren – Karibus, Schneehühner und Füchse – und natürlich den berühmten Eisbären! Die Reiseführer der Hütte sind Einheimische der arktischen Gebiete und sie besitzen Fachwissen wie kein anderer. Gäste der Wat'chee Lodge können diese unvergessliche Erfahrung in sicherer Umgebung in vollen Zügen genießen.

Wat'chee Lodge liegt 40 Meilen südlich von Churchill, MB. Kanada.

Lat: 58.73N, Lon: 94.05



Besucher können von Winnipeg nach Churchill fliegen und dann mit dem Zug zum nahegelegenen Chesnaye fahren; dort wird eine beheizte, moderne Pistenraupe bereitstehen, um Sie zur Tundra und bis zur Wat'chee Lodge zu transportieren.

Reisende, die das Abenteuer suchen oder mehr von der Landschaft mitten in der Provinz erleben möchten, können auch mit dem Zug von Winnipeg nach Chesnaye fahren.

Über unsere Eisbären (*Ursus maritimus*)

Biologen zufolge gibt es ungefähr 22.000 bis 25.000 Eisbären auf der Welt, was sie zu einer bedrohten (aber noch nicht zu einer vom Aussterben bedrohten) Spezies macht. Mehr als 60% der Eisbär-Population lebt in Kanada und Wat'chee Lodge liegt mitten im weltgrößten Gebiet, in dem Eisbären in Eishöhlen ihre Jungen zur Welt bringen, direkt angrenzend an den Wapusk National Park.

Die Wat'chee Lodge war lange Zeit ein begehrtes und sorgfältig gehütetes Geheimnis von Naturforschern und Fotografen wilder Tiere aus der ganzen Welt, doch die Wat'chee Lodge heißt auch Abenteuerer und Reisende herzlich willkommen. Die Reiseführer der Hütte sind Einheimische der arktischen Gebiete und sie besitzen Fachwissen wie kein anderer. Gäste der Wat'chee Lodge können diese unvergessliche Erfahrung in sicherer Umgebung in vollen Zügen genießen.



Sie haben uns gewarnt: „...dies ist nicht Churchill im Oktober. Es ist härter. Es ist unsicherer. Es ist auch der einzige Ort auf Erden, an dem man Eisbärenmütter mit ihren frisch geborenen Jungen beobachten kann. Und es war jahrelang ein streng gehütetes Geheimnis von Fotografen wilder Tiere.“

POLAR BEAR MOTHER & NEWBORN CUBS



ARCTIC KINGDOM



DESIGNED FOR EXCLUSIVITY & THE ADVENTURE OF A LIFETIME

Polar Bear Mother & Newborn Cubs Photo Safari takes you into one of the world's largest polar bear denning areas, Wapusk National Park, for one of the most rarely-seen wildlife experiences. This lodge-based photo safari offers an exclusive opportunity to be one of a select few to see polar bear cubs and their mothers in their natural environment, at a close range.

Other wildlife viewing opportunities may include Arctic fox, Arctic hare, ptarmigan, and chances of migrating caribou.

Enjoy shimmering Northern Lights at night, after days of observing and photographing precious moments between polar bear mothers and cubs as they explore this winter wonderland.

Watch as cubs emerge from snowy maternity dens and temporary shelters as they prepare to explore their new world. Capture cubs jumping on patient mothers and playing with their siblings. Witness intimate moments as the tiny cubs cuddle up to their mother for a nap.

Manitoba's Wapusk (Cree for "white bear") National Park is one of the few places on earth where people can witness newborn polar bear cubs explore their snowy world for the first time.



HIGHLIGHTS

- Be one of only a few dozen photographers and guests annually to see newborn polar bear cubs emerge from their den.
- Witness shimmering and awe-inspiring northern lights at night.
- Enjoy the chance of other iconic wildlife like Arctic fox, Arctic hare or caribou freely walking by.
- Unique tracked, heated vehicles offer unprecedented, comfortable access to the polar bear denning habitat located within Wapusk National Park.
- The Newborn Polar Bear Cub Lodge is a refurbished former naval communications base situated on top of an old beach ridge located about 60km (40 miles) south of Churchill.

ITINERARY

DAY 1 | ARRIVE IN WINNIPEG

Arrive in Winnipeg, Manitoba and transfer to an airport hotel. Once settled into your hotel, join your Arctic Kingdom Expedition Leader and become acquainted with your travel companions. Clothing swap out will be at 7 PM followed by a briefing at 8 PM served with complimentary appetizers and a drink.

DAY 2 | YOUR ADVENTURE BEGINS

This adventure begins with a morning flight to Churchill, Manitoba. On arrival, enjoy lunch at a local restaurant. Following lunch, you will visit the Parks Canada Visitor Centre and Polar Bears International, for educational talks about Wapusk National Park and the Polar Bears you will encounter. Group dinner to



follow. After dinner, transfer to the train station where you will board the evening train to Chesnaye, then transfer to the Newborn Polar Bear Cub Lodge, assisted by your expedition Leader.

[DAYS 3-10 | AT THE LODGE](#)

Spend these days witnessing the grace and majesty of mother polar bears in their natural habitat while their cubs tumble and explore. On snowmobiles, guides will scout the polar bear's dens in advance. When they find their dens, they radio the location to our heated, tracked vans offering unprecedented and comfortable access to denning habitats. On some days, we'll enjoy visits to known denning locations, while on other days, we may seek new, unknown dens. Travel time from the lodge to the dens will vary, but you can generally expect a 20 to 60 minute or more drive. Wildlife viewing, including caribou and ptarmigan, is also possible. Enjoy hot dinners at the lodge, and if the conditions are right, watch the dancing Northern Lights at night.

[Day 11 | DEPART FROM LODGE](#)

Transfer back to Churchill where you will receive a town tour followed by a group lunch. If time permits before your flight to Winnipeg, you will travel to the Northern Studies Centre, where you will partake in a tour of their state of the art eco-friendly facility. Snacks, souvenir shopping and/or dinner to follow depending on flight departure time to Winnipeg. Transfer to the airport to fly to Winnipeg and overnight at a hotel.



ACCOMMODATIONS

NEWBORN POLAR BEAR CUB LODGE

A refurbished naval communications base, the Newborn Polar Bear Cub Lodge stands 300 feet on top of an old beach ridge, located just south of Churchill, MB, Canada.

Nestled in the middle of the tundra, with the nearest neighbour being 64km (40 miles) away, the lodge is as self-sufficient as it is “off the grid”. This rustic lodge provides some of the world’s best access to mother and newborn polar bear cubs.

Single, double and quad rooms are available. If you are travelling with a group of four, you may request a quad room. While we do our best to accommodate, room requests are not guaranteed. The lodge is generally at capacity at this time of the year.

NOTE: The lodge can accommodate up to 24 guests, so your group and Arctic Kingdom Expedition Leader will be sharing the lodge with other guests and guides.

FEATURES:

- Some single rooms available, but most are shared by up to four people with bunk beds.
- Wood burning fireplace in the central lounge.
- A sauna is available, but a shower is not.
- Power provided by onsite generators.
- Internet is available, but very limited and not guaranteed.



TRIP NOTES

The intent of our Polar Bear Mother and Newborn Cubs Photo Safari is to offer you the opportunity to capture the magical and rare sight of newborn polar bear cubs emerging from their dens for the very first time. You'll have a chance to witness heartwarming moments between mother polar bear and cubs and humorous ones as you watch the cubs peek their heads out of the snow, frolic with each other, and stumble along in the snow as they begin to explore their new world. While sightings are not guaranteed due to the unpredictable nature of wildlife and weather, this is one of the most reliable place in the world to see newborn polar bear cubs, so our chance of seeing the bears is very good.

The Arctic has many variables that can influence any travel plans. Being relaxed, patient, and flexible are important attitudes to have. Itineraries are general guidelines and may change due to weather and unexpected conditions.

GETTING THERE

Travel arrangements between your point of origin and Winnipeg (YWG) are the responsibility of the traveller. We strongly recommend that participants travelling on reduced fare airline tickets not try to continue their journey home on the final day of the trip as any deviation from a ticketed itinerary will result in a penalty regardless of the cause. We highly recommend that you do not plan on having any important meetings or events the day after your trip end date and we recommend planning on 'buffer time' to account for any possible delays in getting home.



IS THIS ADVENTURE FOR YOU?

This safari is perfect for anyone looking for a relaxed adventure. You don't need to have previous Arctic experience, but you do need to have an adventurous spirit. While this is not a strenuous adventure, be prepared for very cold temperatures and unpredictable weather. Our expeditions are typically represented by a range of international participants. Having a laid back, open-minded and patient demeanor is important.

LEVEL OF DIFFICULTY

One can choose to do as little or as much as he/she would like throughout the adventure, you should be able to walk unassisted.

SPIRIT OF ADVENTURE REQUIRED

Arctic Kingdom trips are not intended to have set itineraries or sights to be seen and crossed off in a short period of time. We believe in taking things as they come, to relax and enjoy the opportunities, be it a sunny or foggy day, to appreciate where you are in the moment, and fall into the lifestyle of the local people.

It is assumed that participants have the spirit within themselves to enjoy the unique solitude of the Arctic and free time provided. If this outlook is not for you we can assist in finding an alternative Arctic trip that offers a more structured itinerary and "observer" role versus actively participating in an adventure of discovery. Good health is fundamental to travel in any remote region. All participants will be required to obtain emergency medical and evacuation travel insurance. Age should not be considered a deterrent.



POLAR CLOTHING PACKAGE

A recommended clothing packing list will be provided upon registration. We recommend that anyone travelling to the Arctic dresses in layers. The insulating outer layer is of particular importance. Regular ski jackets and pants are not suitable for this Arctic climate.

We realize that good quality Arctic-worthy equipment is expensive to purchase all at once, and may not be necessary for a one-time Arctic adventure. Arctic Kingdom has a top-of-the-line Arctic Polar Clothing Rental Package that will enhance your Arctic experience and allow you to enjoy your expedition in comfort, no matter what Mother Nature brings.

With more than a decade of experience in all types of Arctic weather, we know what works and what doesn't. All of our staff have depended on the same clothing package for years of Arctic adventures, so you can rest assured you are getting the best options available.

MEALS

We know that no amazing Arctic experience is complete without delicious food. The lodge chef will prepare the day's meals, snacks and delicious desserts- buffet style. A hot lunch and beverages are provided while viewing den sites. The dining/lounge area will have a convenient buffet table where unlimited snacks and hot drinks are provided throughout the day.

The kitchen is not kosher. If you have special dietary needs, please advise us at time of booking.



DAYLIGHT HOURS

You can expect approximately 11 hours of full daylight at this time of year.

WEATHER

FEBRUARY/MARCH

The weather in March can be variable. Expect to experience cold temperatures ranging from -40°C to -20°C (-40°F to -4°F).

WHAT TO EXPECT

This Arctic safari is designed around viewing and photographing polar bears along with a variety of other Arctic wildlife we may encounter. There may be an opportunity to see polar bear mothers and cubs as they emerge from their den, however, there may also be days when polar bears may not be spotted. During these times, you can enjoy walks out on the frozen tundra in search of other Arctic wildlife. Our treks also provide an excellent opportunity to photograph the stunning landscapes and impressive natural setting.

FAQ

With over 20 years of Arctic and expedition experience, we at Arctic Kingdom have been asked all kinds of questions. We understand that many of our guests have never partaken in an experience quite like our safaris nor have visited the Arctic before. We want to take this opportunity to make each of our guests feel comfortable and well prepared for their upcoming safari.

We've compiled a list of the top questions paired up with answers based on our knowledge and experience. Visit our FAQ page for all of your questions and answers



RESPONSIBLE TOURISM

Arctic Kingdom takes a 'total approach' to responsible tourism. Everything, from the way we plan and operate our trips to the practices of Arctic Kingdom as a company, is geared toward making a positive impact on the regions we visit. Arctic Kingdom trips are designed to allow a high degree of economic benefit to the local communities; we hire local guides and local drivers, eat local food, and use local services to ensure as much money as possible is retained within the local economy and the host communities. We are continually reassessing our trips, always ensuring that they are socially, economically, and environmentally sound.

[SPEAK TO AN ARCTIC TRAVEL
ADVISOR TODAY TO PLAN YOUR
ADVENTURE](#)

Trip Details

2024



2025



Price

CAD \$30,680 (tax included)
*per person, based on double occupancy. Flight pricing is subject to change

Location

Wapusk National Park,
Manitoba

Travel Package

Flights/Transfers from
Winnipeg, MB (YWG) to
Churchill, MB (YYQ)

Final Dates

February 26 - March 8, 2024
(Sold Out - Waitlist Only)

International Gateway

Winnipeg, MB (YWG)

Group Size

9 (Lodge capacity: 24)

Transportation

Vans on tracks, train

Average Temperature

-40°C to -20°C (-40°F to
-4°F)

Daylight

11 hours

Trip Details

2024



2025



Price

CAD \$30,680 *per person,
based on double occupancy

12-day/11-night Itinerary

Safari/Flight pricing is subject
to change based on final
flight and itinerary
confirmation

Location

Wapusk National Park,
Manitoba

Travel Package

Flights/Transfers from
Winnipeg, MB (YWG) to
Churchill, MB (YYQ)

International Gateway

Winnipeg, MB (YWG)

Tentative Dates

Late February to Early March
Dates to be confirmed

2025 Early Registration
(Inquire for details)

Group Size

9 (Lodge capacity: 24)

Transportation

Vans on tracks, train

Average Temperature

-40°C to -20°C (-40°F to
-4°F)

Daylight

11 hours



Winter Polar Clothing Package Guide



Introduction

This polar clothing package is suggested for Arctic Kingdom trips in the fall, winter and early spring months, including the following:

- Spring Polar Bears & Icebergs of Baffin Photo Safari
- Polar Bear Mother & Newborn Cubs Photo Safari
- Polar Bear Migration Fly-In Photo Safari

Dressing for Arctic Weather & Conditions

Temperatures and weather conditions in polar regions varies widely depending on season and location. It can even change significantly throughout the week or day. In March and April, you may experience temperatures as cold as -40°C (-40°F), and in October and November average temperatures range from -5°C to -20°C (41°F to -4°F), with good chances of snow. Strong winds, either natural or from riding behind a snowmobile, can make temperatures feel much colder (wind chill).

Clothing is key to your comfort in the Arctic. While actual temperatures, weather conditions, and wind chill, differ by season and location, the basics of dressing for cold weather are the same. We recommend dressing in layers, adding or subtracting the layers according to your needs.

There are three essential layers:

1. Base Layer
2. Insulating Mid-Layer
3. Outer Layer

Base layers and insulating layers can be used in almost any type of weather or winter climate. The outer layer will be determined by the type of weather expected on your Arctic expedition.



Our Winter Polar Clothing Package

Our Winter Polar Clothing Package includes top of the line brands, including Canada Goose and Outdoor Research (OR). With more than a decade of experience in all types of Arctic weather, we know what works and what doesn't. Each item included in our Polar Clothing Package has been personally tried and tested in the extreme climates of the Canadian Arctic.

The Canada Goose Expedition Parka is your first line of defense against cold or unpredictable weather. This insulated parka features a durable, water repellent, Arctic-Tech shell. Paired with Canada Goose insulated winter pants and winter boots rated to -100°C (-148°F), you will be ready to face the elements.

To protect your head and hands, we recommend that you purchase a windproof hat, balaclava, liner gloves, windproof gloves, and snow goggles.

Our Winter Polar Clothing Package includes:

1. Canada Goose Expedition parka
2. Canada Goose down-filled snow pants
3. Winter boots
4. Waterproof insulated mitts
 - Duffle bag for carrying gear

1.



2.



3.



4.



Package Pricing

For guests on Arctic Kingdom trips, the price per rental is CAD \$695 plus tax.

featuring all the apparel and travel gear you need to get ready for and fully enjoy your Arctic adventure. Your purchases will be expertly handled by our online store partner, **New Headings**.

We have organized the gear you may need into sections to help with your decisions, including any accessories our guests find useful for maximizing their experience. Should you have any questions or if you are unsure of what season your trip falls into, please reach out to your Client Service Representative.

Sizing Charts

Men's Parka & Pants

	XS	S	M	L	XL	2XL
Chest	86-89cm 34"-35"	91-94cm 36"-37"	97-102cm 38"-40"	104-109cm 41"-43"	112-117cm 44"-46"	119-130cm 47"-51"
Waist	69-71cm 27"-28"	74-76cm 29"-30"	79-84cm 31"-33"	86-91cm 34"-36"	94-99cm 37"-39"	102-112cm 40"-44"
Hips	86-89cm 34"-35"	91-94cm 36"-37"	97-102cm 38"-40"	104-109cm 41"-43"	112-117cm 44"-46"	119-130cm 47"-51"
European	42	46	48	52	56	60

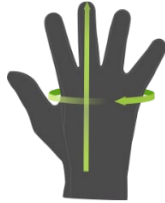
Women's Parka & Pants

	XS	S	M	L	XL
	2	4-6	8-10	12-14	16-18
Chest	81-84cm 32"-33"	86-89cm 34"-35"	91-94cm 36"-37"	97-102cm 38"-40"	104-109cm 41"-43"
Waist	66-69cm 26"-27"	71-74cm 28"-29"	76-79cm 30"-31"	81-86cm 32"-34"	89-94cm 35"-37"
Hips	91-94cm 36"-37"	97-99cm 38"-39"	102-104cm 40"-41"	107-112cm 42"-44"	114-112cm 45"-47"
European	36	38	40	42	46

Winter Boots

USA, Men	5	5.5	6	6.5	7	7.5	8	8.5	9	9.5	10	10.5	11	11.5	12	12.5	13
USA, Women	6.5	7	7.5	8	8.5	9	9.5	10	10.5	11	11.5	12	12.5	13	13.5	14	14.5
UK, Men	4.5	5	5.5	6	6.5	7	7.5	8	8.5	9	9.5	10	10.5	11	11.5	12	12.5
UK, Women	4	4.5	5	5.5	6	6.5	7	7.5	8	8.5	9	9.5	10	10.5	11	11.5	12
Europe	37	37.5	38	38.5	39	40	40.5	41	42	42.5	43	44	44.5	45	46	46.5	47
Japan	23	23.5	24	24.5	25	25.5	26	26.5	27	27.5	28	28.5	29	29.5	30	30.5	31

Waterproof Insulated Mitt

	S/7	M/8	L/9	XL/10	HOW TO MEASURE
Circumference	17.8-19.7cm 7.0-7.75"	20.3-21.6cm 8.0-8.5"	22.8-24.1cm 9.0-9.5"	24.1-25.4cm 9.5-10.0"	<p>Measure around a flat hand at the knuckles, do not include your thumb. Measure your hand length from the base of your palm to the end of your middle finger. Use the larger of the two measurements to select your glove size.</p> 
Length	16.5-17.8cm 6.5-7.0"	19.7-20.3cm 7.75-8.0"	21.6-22.8cm 8.5-9.0"	22.8-24.1cm 9.0-9.5"	

How to Select the Best Size

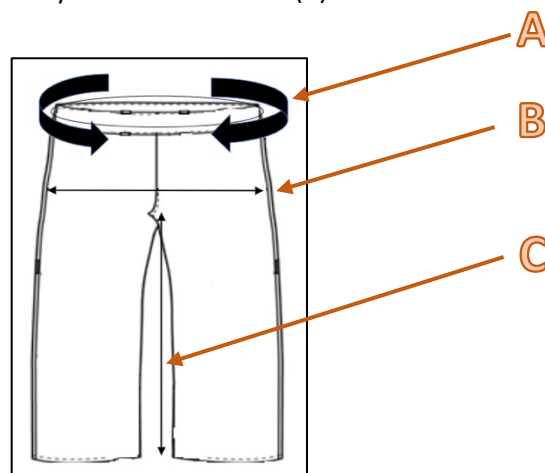
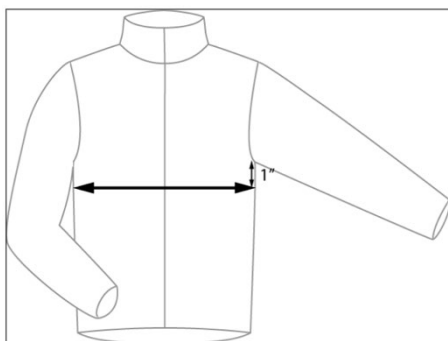
Chest Size

- Place measuring tape 1" below your arm pit and measure the circumference around your chest

Waist, Hip, Inseam

Keeping the tape measure a bit loose, measure the following:

- Waist - Measure the circumference around your waist (A)
- Hip - Measure 9" down from top of waist and measure your circumference (B)
- Inseam - Measure from crotch to your ankle (C)



Boot Size

- All of our boots are sized based on **USA Men's sizing**
- Find your regular shoe size on the sizing chart.
- Determine your equivalent US men's shoe size.
- Your appropriate boot size would be one full US men's size bigger than your US men's shoe size.
 - Example: Your UK Women's shoe size is a 6. According to the size chart, your US men's shoe size is a 7. Therefore, choose a size 8 boot on your order form. (See in blue below)
- Boots are only available in full sizes; half sizes are not available. If your US men's shoe size is a half size, choose the size 1.5 times bigger.
 - Example: Your shoe size is a European 42.5, which equals a US men's size 9.5. Therefore, select a size 11 boot on your order form (See in red below)

USA, Men	5	5.5	6	6.5	7	7.5	8	8.5	9	9.5	10	10.5	11	11.5	12	12.5	13
USA, Women	6.5	7	7.5	8	8.5	9	9.5	10	10.5	11	11.5	12	12.5	13	13.5	14	14.5
UK, Men	4.5	5	5.5	6	6.5	7	7.5	8	8.5	9	9.5	10	10.5	11	11.5	12	12.5
UK, Women	4	4.5	5	5.5	6	6.5	7	7.5	8	8.5	9	9.5	10	10.5	11	11.5	12
Europe	37	37.5	38	38.5	39	40	40.5	41	42	42.5	43	44	44.5	45	46	46.5	47
Japan	23	23.5	24	24.5	25	25.5	26	26.5	27	27.5	28	28.5	29	29.5	30	30.5	31

POLAR ADVENTURES

Schiffs- und Flug- Expeditionen
in Arktis und Antarktis

OFFLINE-KATALOG-ANFORDERUNG

Sehr geehrte Reise-Interessenten. Vielen Dank für Ihr Interesse und den Download eines digitalen Kataloges im PDF-Format.

Gerne senden wir Ihnen zusätzlich bei weitergehendem Interesse die ausgewählten PDF-Inhalte als gedruckte Version auf dem Postweg.

Bitte nennen Sie unten den gewünschten Katalog und senden Sie dieses Formular per Post oder Fax an uns zurück.

Bitte senden Sie mir den aktuellen Katalog für folgendes Schiff/ Tour:

--

Bitte senden Sie den ausgewählten Katalog an folgende Adresse:

Vorname + Name

Telefonnummer

--	--

Strasse + Nr.

Faxnummer

--	--

PLZ + Wohnort

e-mail-Adresse

--	--

Bitte per Post an:

oder per Fax an 04131-54255

an POLARADVENTURES Schiffs- und Flug-Expeditionen in Arktis und Antarktis Heinrich-Böll-Str. 40 D-21335 Lüneburg
--

POLAR ADVENTURES

Schiffs- und Flug- Expeditionen in Arktis und Antarktis

**Unverbindliche Buchungsanfrage per Fax an 04131-54255 oder per Post an
Polaradventures, Heinrich-Böll-Str. 40, D-21335 Lüneburg, Deutschland**

Bitte unterbreiten Sie mir ein unverbindliches Angebot für folgende Leistungen:

- ☐ Veranstalter-Angebot mit Insolvenzversicherung nach deutschem Reiseveranstalterrecht + Preis in EUR
☐ Direkt-Angebot der ausländischen Reedereien (ausländ. Reiserecht + Preis in USD zum Tageskurs in EUR)

Schiffsname	
Reisename/ -Route	
Abfahrt von - bis (tt/mm - tt/mm/jj)	
Alternative Abfahrt (tt/mm - tt/mm/jj) (falls ausgebucht)	
Kabinenkategorie	
Alternative Kabinenkategorie (falls ausgebucht)	

- ☐ Doppelkabine ☐ Doppelkabine zur Einzelnutzung ☐ Halbe Doppelkabine zur Mitbenutzung

Zubringerflüge:

Abflughafen	
Hinflugdatum (tt/mm/jj)	
Rückflugdatum (tt/mm/jj)	
bevorzugte Airline	

- ☐ Economy-Class ☐ Business-Class

Zusätzliche Hotelübernachtungen:

Hotelname/Übernachtungsort	
Aufenthalt von - bis (tt/mm - tt/mm/jj)	
Hotelname/Übernachtungsort	
Aufenthalt von - bis (tt/mm - tt/mm/jj)	

Reiseversicherungen:

- ☐ keine
☐ Reiserücktrittskostenversicherung
☐ Komplettschutz (Reiserücktritts-, Kranken-, Unfall-, Gepäck- und Notfallversicherung)

Persönliche Angaben:

1. Reiseteilnehmer Vorname, Name / Geburtsdatum	
2. Reiseteilnehmer Vorname, Name / Geburtsdatum	

Angebot bitte:

<input type="checkbox"/> per Email an (Emailadresse)	
<input type="checkbox"/> per Fax an (Nummer)	
<input type="checkbox"/> per Post an (Vorname & Name) (Straße & Nr.) (PLZ & Wohnort)	

POLARADVENTURES Schiffs- und Flug-Expeditionen in Arktis und Antarktis

Reiseagentur * Heinrich-Böll-Str. 40 * D-21335 Lüneburg * Deutschland

Tel +49-4131- 223474 Fax +49-4131-54255 infos@polaradventures.de www.polaradventures.de

POLAR ADVENTURES

Schiffs- und Flug- Expeditionen
in Arktis und Antarktis

Saison 2024 & 25

Direkt-Angebote

**ab-bis Winnipeg (Kanada)
für individuelle Planungen**