

POLAR ADVENTURES

Schiffs- und Flug- Expeditionen
in Arktis und Antarktis



Arktis

Expeditions-Kreuzfahrten

MV Villa

POLARADVENTURES Schiffs- und Flug-Expeditionen in Arktis und Antarktis

Heinrich-Böll-Str. 40 * D-21335 Lüneburg * Deutschland

Tel +49-4131- 223474 Fax +49-4131-54255 infos@polaradventures.de www.polaradventures.de

POLAR ADVENTURES

Schiffs- und Flug- Expeditionen
in Arktis und Antarktis

Saison Arktis Sommer 2024

Reederei Direkt-Angebote

**ab-bis Hafen für individuelle
Planungen**

**alle Abfahrten der Saison inkl.
englischsprachiger Termine**

2024 Svalbard Adventure: 8 days

From 68 500 NOK

Per guest



13 - 20 July 2024

Svalbard is the Norwegian archipelago between mainland Norway and the North Pole. It was discovered by Willem Barentsz in 1596 and is approximately 600 miles (965 kilometres) from the North Pole and 400 miles (644 kilometres) north of Norway. With a land area of 24,721 mi² or 39,784 km² and with 60% of the land covered in ice, Svalbard is considered the largest wilderness area in Europe. Spread across four settlements (Longyearbyen being the largest), it has a population of 2,600.

Expedition mode begins as soon as we depart Longyearbyen – your Expedition Leader and Captain will determine the route based on wildlife, weather, and ice conditions. MV Villa is an excellent platform for photographing the stunning scenery as we sail towards the pack ice in search of seabirds, seals, whales, and, of course, the King of the Arctic... the polar bear.

Join your Expedition Guides on Zodiac cruises and on shore landings to explore, view wildlife and visit historic sites. With a maximum group size of 12 guests, we can mobilize quickly and easily take advantage of any wildlife-viewing opportunities that present themselves ashore or in the Zodiacs. This enables us to easily maximize your Svalbard experience!

DAY 1: LONGYEARBYEN

Meet your dedicated expedition team and crew at the dock in Longyearbyen at 16:00hrs, where you will embark MV Villa and make yourself at home. After you are settled in your cabin, we will conduct the mandatory safety briefing before we sail out from Adventfjorden into Isfjorden. Enjoy the open decks before a welcome dinner is served in the dining room. Your adventure has just begun!

DAY 2-7: EXPLORE THE ARCHIPELAGO

We will be in full expedition mode, exploring the archipelago and taking advantage of all that Svalbard has to offer. Weather and ice conditions will determine the route and your Expedition Leader will keep you updated on the plan throughout your days onboard. On the final day we return to Longyearbyen to celebrate our shared adventures and dock for the night.

Below is an example of what an expedition can look like.

Adventfjorden: As we leave Longyearbyen we will travel through Isfjorden and explore a side fjord before sailing north during the night.

Northwest Corner: Sail through the northwest corner of Spitsbergen and explore with Zodiacs and landings.

Explore the Pack Ice: Search for wildlife and find that perfect spot for a polar plunge!

Hinlopen Strait: The strait that separate east from west of the Svalbard archipelago offers an abundance of hikes, bird cliffs, and spectacular scenery.

Liefdefjorden: We will explore deep into the fjord of love and might reach the mighty Monaco glacier.

Kongsfjorden: Hiking, glacier cruising, wildlife watching or visiting some of the historic sites of Svalbard are all possibilities here.

Isfjorden: Explore the fjord delta throughout the day and arrive into Longyearbyen in the evening.

DAY 8: LONGYEARBYEN

Enjoy a final breakfast together as we arrive to Longyearbyen, our final destination where we bid you farewell for disembarkation.

INCLUDED:

Expedition activities (Zodiac cruises, shore landings, hikes)

Professional guides with lectures and hands-on, in-field tutorials

Breakfast, lunch and dinner (welcome day is dinner only; final day is breakfast only)

Welcome cocktail; wine with the farewell dinner

Daily cabin housekeeping and turn-down service

EXCLUDED:

Travel to and from starting point in Longyearbyen, Svalbard

Taxes, levies, insurance, VISA fee, immigration duties or other travel services (where applicable)

Personal items such as expedition clothing

Alcoholic beverages

Crew gratuities

Solo Traveller?

(Our single supplement rate is x 1.8).

DEPARTURE:

13 July 2024

Valid days for arrival: Mon, Tue, Wed, Thu, Fri, Sat, Sun

[← Show all packages](#)

Step 1 of 3 - Choose room type for 2024 Svalbard Adventure: 8 days

You have searched for Sat 13 Jul - Sat 20 Jul, 7 nights, 1 room, 2 guests

You have searched for

Arrival date

Saturday
13
July

Check-out

Saturday
20
July

Number of nights:
Number of rooms:

7 nights
1 room 2 guests

[New search](#) ▾



ARNESEN

Located on Deck 1 with views over the forward wooden deck.
Shared bathroom.

[More information](#) ▸

Bunk bed 7.4 m² Max 2 pers.

137 000 NOK
for 7 nights 2 adults

[Choose](#) ▸



ANDRÉE

Located on Deck 1 with views over the forward wooden deck.
Shared bathroom.

[More information](#) ▸

Bunk bed 8.8 m² Max 2 pers.

137 000 NOK
for 7 nights 2 adults

[Choose](#) ▸

2024 Svalbard Adventure: 8 days

13 - 20 July 2024 Svalbard is the Norwegian archipelago between mainland No...

[More information](#) ▸



[← Show all packages](#)

Step 1 of 3 - Choose room type for 2024 Svalbard Adventure: 8 days

You have searched for Sat 13 Jul - Sat 20 Jul, 7 nights, 1 room, 1 guest

You have searched for

Arrival date

Saturday
13
July

Check-out

Saturday
20
July

Number of nights:

7 nights

Number of rooms:


1 room 1 guest

New search

▼



2024 Svalbard Adventure: 8 days
13 - 20 July 2024 Svalbard is the Norwegian archipelago between mainland No...
[More information >](#)



ARNESEN

Located on Deck 1 with views over the forward wooden deck. Shared bathroom.

[More information >](#)


Bunk bed

7.4 m2

Max 2 pers.

68 500 NOK
for 7 nights 1 adults

Choose >



ANDRÉE

Located on Deck 1 with views over the forward wooden deck. Shared bathroom.

[More information >](#)

Bunk bed

8.8 m2

Max 2 pers.

68 500 NOK
for 7 nights 1 adults

Choose >

2024 Ultimate Svalbard: 11 days

From 97 000 NOK

Per guest



24 August - 3 September 2024

Svalbard is the Norwegian archipelago between mainland Norway and the North Pole. It was discovered by Willem Barentsz in 1596 and is approximately 600 miles (965 kilometres) from the North Pole and 400 miles (644 kilometres) north of Norway. With a land area of 24,721 mi² or 39,784 km² and with 60% of the land covered in ice, Svalbard is considered the largest wilderness area in Europe. Spread across four settlements (Longyearbyen being the largest), it has a population of 2,600.

Expedition mode begins as soon as we depart Longyearbyen – your Expedition Leader and Captain will determine the route based on wildlife, weather, and ice conditions. MV Villa is an excellent platform for photographing the stunning scenery as we sail towards the pack ice in search of seabirds, seals, whales, and, of course, the King of the Arctic... the polar bear.

Join your Expedition Guides on Zodiac cruises and on shore landings to explore, view wildlife and visit historic sites. With a maximum group size of 12 guests, we can mobilize quickly and easily take advantage of any wildlife-viewing opportunities that present themselves ashore or in the Zodiacs. This enables us to easily maximize your Svalbard experience!

DAY 1: LONGYEARBYEN

Meet your dedicated expedition team and crew at the dock in Longyearbyen at 16:00hrs, where you will embark MV Villa and make yourself at home. After you are settled in your cabin, we will conduct the mandatory safety briefing before we sail out from Adventfjorden into Isfjorden. Enjoy the open decks before a welcome dinner is served in the dining room. Your adventure has just begun!

DAY 2-10: EXPLORE THE ARCHIPELAGO

We will be in full expedition mode, exploring the archipelago and taking advantage of all that Svalbard has to offer. Weather and ice conditions will determine the route and your Expedition Leader will keep you updated on the plan throughout your days onboard. On the final day we return to Longyearbyen to celebrate our shared adventures and dock for the night.

Below is an example of what an expedition can look like.

Adventfjorden: As we leave Longyearbyen we will travel through Isfjorden and explore a side fjord before sailing north during the night.

Northwest Corner: Sail through the northwest corner of Spitsbergen, named after its sharp mountain peaks, and explore with Zodiacs and landings.

Seven Islands: The northern most land mass in Svalbard which is an exciting group of islands that never disappoints. Close to the pack ice, they serve as a gateway for wildlife living in the ice.

Explore the Pack Ice: Depending on the distance to the ice edge, we might sail towards the North Pole pack ice and search for wildlife.

White Island: The most easterly island on Svalbard is White island. An ice cap covers most of the island and the few exposed places are home to polar bears and walrus. We hope to Zodiac cruise this amazing island that became the last resting place of the Swedish explorer Salomon August Andrée who tried to cross the North Pole in a hydrogen balloon.

Bråsvellbreen & Hinlopen Strait: Sail along the ice wall of the third largest ice cap in the world hoping to get close to the famous Bråsvellbreen with its majestic waterfalls. We continue into Hinlopen Strait that separates the west island from the North Austland. Hinlopen offers beautiful hiking and Zodiac cruising affording you endless opportunities.

Liefdefjorden: We will explore deep into the fjord of love and might reach the mighty Monaco glacier. The side fjords and small groups of islands offers a perfect stop for a hike or a Zodiac cruise that will impress even the most experienced adventurer.

Raudfjorden & Magdalenafjorden: On our way west the stunning Raudfjorden might be a good place for an outing. Beaches and glaciers make up for a perfect scenery in our continuous search for wildlife. One of the most scenic fjords is Magdalenafjorden, where walrus often inhabit in the small bays.

Kongsfjorden: Known as the Kings fjord, any visitor will soon know why. At the end the mighty Kings glacier stands, next to is the mountain peaks known as the tree crowns (Svea, Nora and Dana) considered by many as some of the most beautiful of mountain peaks. Kongs fjord offer beautiful hiking in lush terrain where we might come across reindeer, ptarmigan or the arctic fox.

Isfjorden: Explore some of Isfjordens many side fjords. A fjord delta that despite it's the closest to human civilization in Svalbard it is home to great wildlife. The warm waters of the Gulf stream make the vegetation lush and we will spend the day Zodiac cruising the glacier fronts, hike the hills that are old ocean floors known to be one of the most dense dinosaur fossil ground in the world.

DAY 11: LONGYEARBYEN

Enjoy a final breakfast together as we arrive to Longyearbyen, our final destination where we bid you farewell for disembarkation.

INCLUDED:

Expedition activities (Zodiac cruises, shore landings, hikes)

Professional guides with lectures and hands-on, in-field tutorials

Breakfast, lunch and dinner (welcome day is dinner only; final day is breakfast only)

Welcome cocktail; wine with the farewell dinner

Daily cabin housekeeping and turn-down service

EXCLUDED:

Travel to and from starting point in Longyearbyen, Svalbard

Taxes, levies, insurance, VISA fee, immigration duties or other travel services (where applicable)

Personal items such as expedition clothing

Alcoholic beverages

Crew gratuities

Solo Traveller?

(Our single supplement rate is x 1.8).

DEPARTURE:

24 August 2024

Valid days for arrival: Mon, Tue, Wed, Thu, Fri, Sat, Sun

[← Show all packages](#)

Step 1 of 3 - Choose room type for 2024 Ultimate Svalbard: 11 days

You have searched for Sat 24 Aug - Tue 3 Sep, 10 nights, 1 room, 2 guests

You have searched for

Arrival date	Check-out
Saturday 24 August	Tuesday 3 September

Number of nights: 10 nights
Number of rooms: 1 room 2 guests
[New search](#) ▾



2024 Ultimate Svalbard: 11 days
24 August - 3 September 2024 Svalbard is the Norwegian archipelago betwee...
[More information](#) >



NANSEN

Our largest suite is located on Deck 2 with views over the forward wooden deck. With two single beds, a sofa and private bathroom you will be very comfortable retiring for the evening after a day full of adventures!
[More information](#) >

Single bed 12 m2 Max 2 pers.

238 000 NOK
for 10 nights 2 adults

[Choose](#) >



BOYD

Located on Deck 2 with port side sea view. Shared bathroom.
[More information](#) >

Bunk bed 7.5 m2 Max 2 pers.

194 000 NOK
for 10 nights 2 adults

[Choose](#) >



ARNESEN

Located on Deck 1 with views over the forward wooden deck. Shared bathroom.
[More information](#) >

Bunk bed 7.4 m2 Max 2 pers.

194 000 NOK
for 10 nights 2 adults

[Choose](#) >



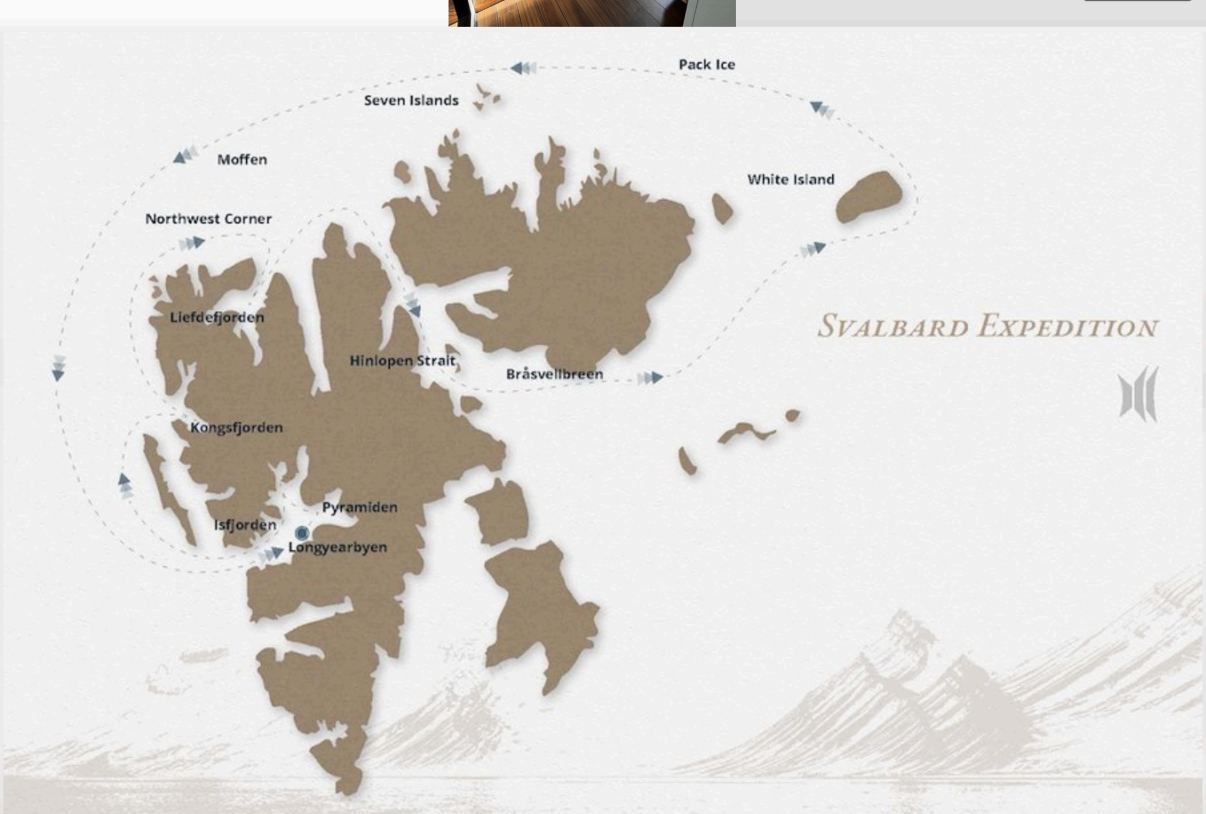
ANDRÉE

Located on Deck 1 with views over the forward wooden deck. Shared bathroom.
[More information](#) >

Bunk bed 8.8 m2 Max 2 pers.

194 000 NOK
for 10 nights 2 adults

[Choose](#) >



[← Show all packages](#)

Step 1 of 3 - Choose room type for 2024 Ultimate Svalbard: 11 days

You have searched for Sat 24 Aug - Tue 3 Sep, 10 nights, 1 room, 1 guest

You have searched for

Arrival date

Saturday
24
August

Check-out

Tuesday
3
September

Number of nights:

10 nights

Number of rooms:

1 room 1 guest

New search

▼



2024 Ultimate Svalbard: 11 days
24 August - 3 September 2024 Svalbard is the Norwegian archipelago between...
[More information >](#)



NANSEN

Our largest suite is located on Deck 2 with views over the forward wooden deck. With two single beds, a sofa and private bathroom you will be very comfortable retiring for the evening after a day full of adventures!

[More information >](#)

Single bed 12 m2 Max 2 pers.

119 000 NOK
for 10 nights 1 adults

Choose >



BOYD

Located on Deck 2 with port side sea view. Shared bathroom.

[More information >](#)

Bunk bed 7.5 m2 Max 2 pers.

97 000 NOK
for 10 nights 1 adults

Choose >



ARNESEN

Located on Deck 1 with views over the forward wooden deck. Shared bathroom.

[More information >](#)

Bunk bed 7.4 m2 Max 2 pers.

97 000 NOK
for 10 nights 1 adults

Choose >



ANDRÉE

Located on Deck 1 with views over the forward wooden deck. Shared bathroom.

[More information >](#)

Bunk bed 8.8 m2 Max 2 pers.

97 000 NOK
for 10 nights 1 adults

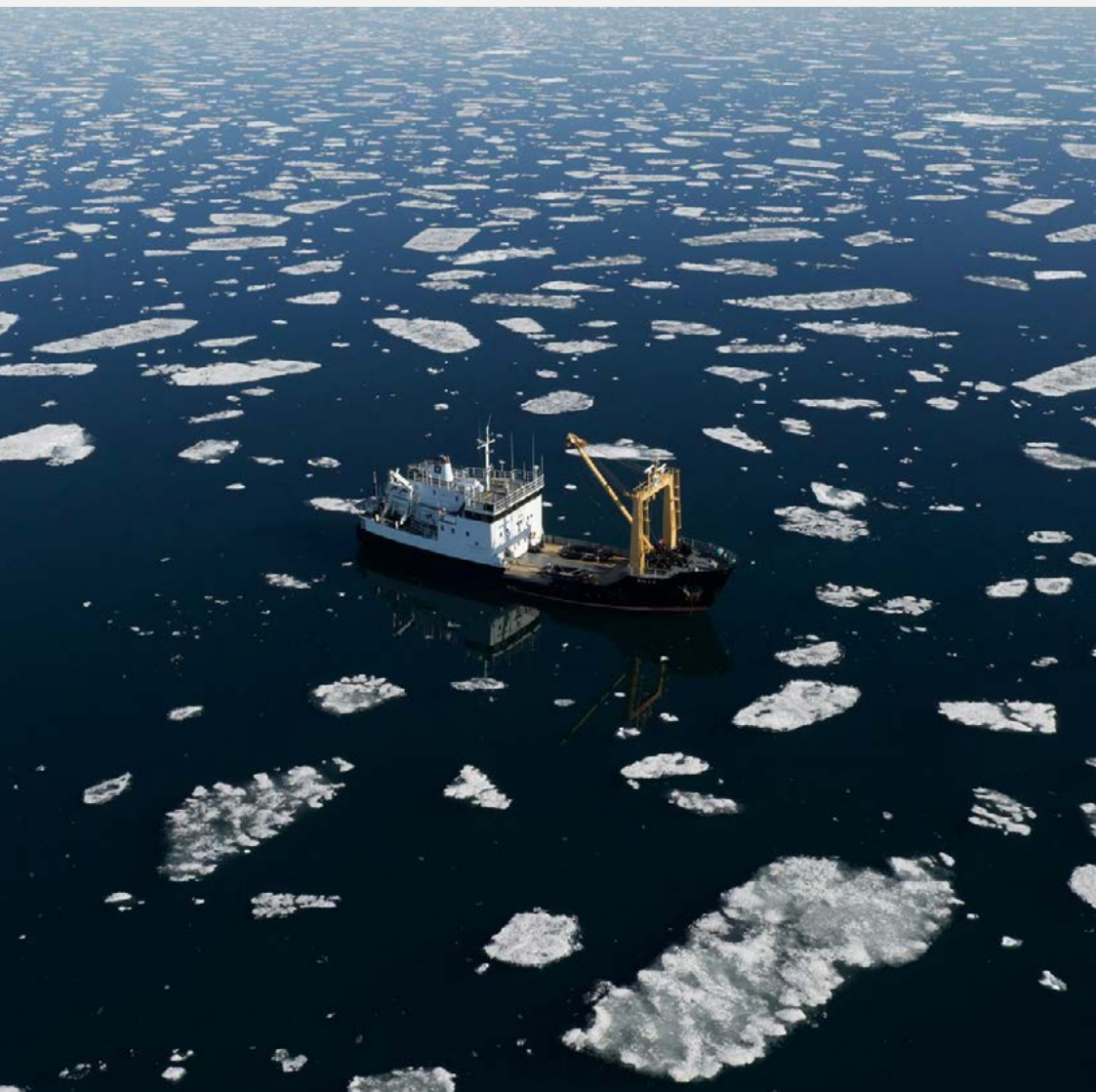
Choose >



NANSEN POLAR EXPEDITIONS

— WE FOLLOW HEROES —

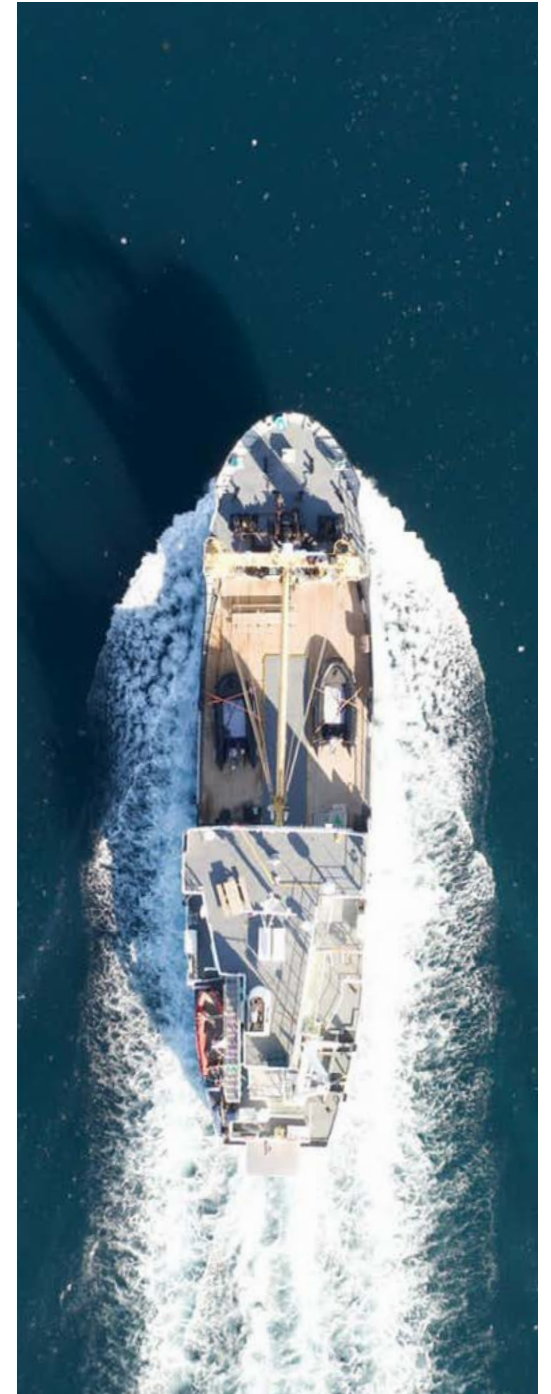
M V VILLA



OVERVIEW

MV Villa operates in the Arctic Circle of the northern hemisphere. She spends spring and summer in Svalbard and the Norwegian Arctic, and autumn and winter in the fjords of northern Norway.

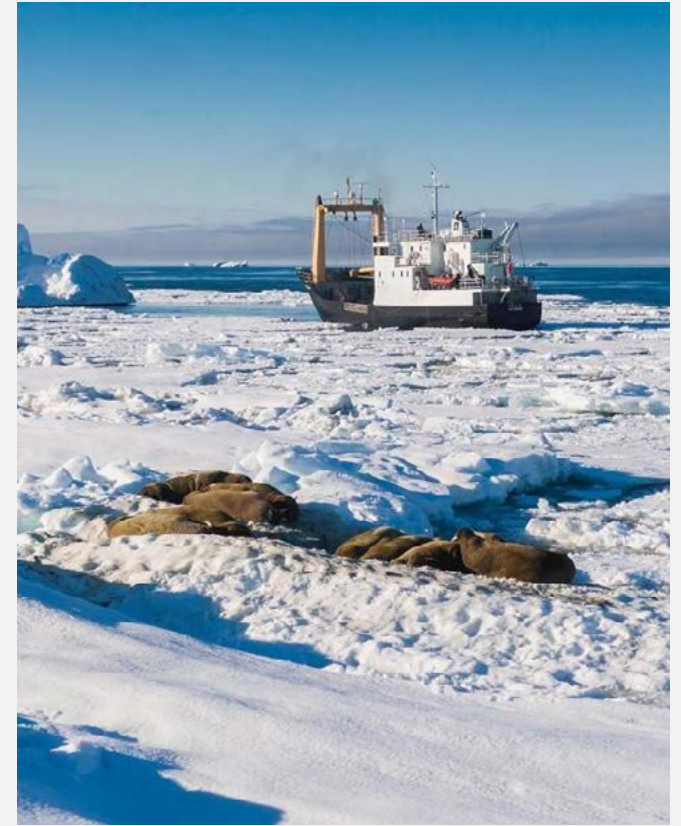
MV Villa's expeditions in Svalbard depart from Longyearbyen, and her expeditions in Northern Norway depart from Tromsø.



MADE FOR ICE

MV Villa boasts 120m² of above-deck space and 160m² of below-deck space. This allows for ample storage and protection of sensitive equipment in a dry environment. As an ice strengthened ship (ice class B) with an installed ice keel and ice propeller, MV Villa is designed to operate in icy waters.







CABINS

MV Villa features accommodation for up to 12 guests in six different cabins.

On Deck 2, Suites NANSEN and AMUNDSEN offer private bathrooms whilst cabins BOYD and SHACKLETON share a separate shower room and WC between them, as do cabins ANDRÉE and ARNESEN on Deck 1.

Named after the great polar explorers, all accommodations onboard feature an ever-changing view of the Arctic.



NANSEN

LOCATION: DECK 2
TWIN BED SUITE

Suite amenities include: Rituals shampoo, conditioner, shower gel, body lotion and hand wash, hairdryer, sink with vanity, bathrobes, television, 230V electrical sockets, comfortable seating area, private bathroom



AMUNDSEN

LOCATION: DECK 2
BUNK BEDS

Cabin amenities include: Rituals shampoo, conditioner, shower gel, body lotion and hand wash, hairdryer, sink with vanity, bathrobes, television, 230V electrical sockets, private bathroom



SHACKLETON

LOCATION: DECK 2
BUNK BEDS

Cabin amenities include:
Rituals hand wash and lotion,
sink with vanity, bathrobes, television,
230V electrical sockets



BOYD

LOCATION: DECK 2
BUNK BEDS

Cabin amenities include: Rituals hand wash and lotion, sink with vanity, bathrobes, television, 230V electrical sockets

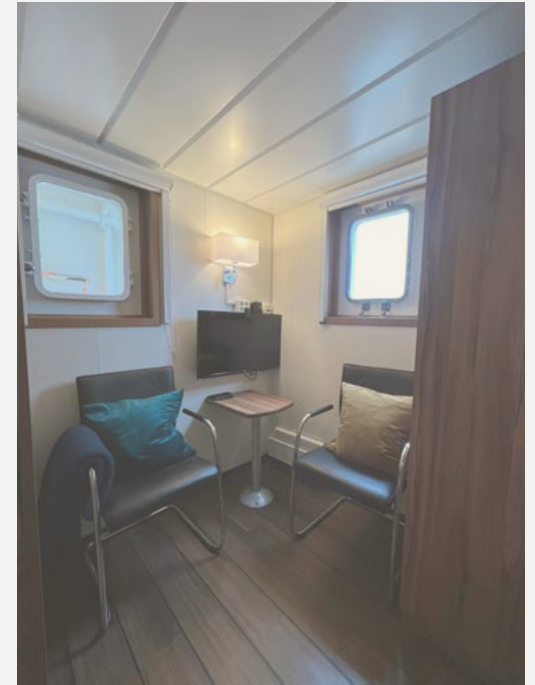




ANDRÉE

LOCATION: DECK 1
BUNK BEDS

Cabin amenities include: Rituals hand wash and lotion, sink with vanity, bathrobes, television, 230V electrical sockets





ARNESSEN

LOCATION: DECK 1
BUNK BEDS

Cabin amenities include: Rituals hand wash and lotion, sink with vanity, bathrobes, television, 230V electrical sockets





PERFECT VIEWS

An integral part of expedition is the ship's Bridge, not just the vessel's command centre but the onboard expedition headquarters as MV Villa sails.

With comfortable seating for guests to relax and enjoy a coffee, spending time with the ship's Captain and Officers, and the Expedition Team as the ship navigates the Arctic. Friendly, relaxed, and informal, the Bridge is a shared working space and social environment that gives our guests the opportunity to learn more from our expert team in between expedition activities.

With a 180° perspective and offering direct access to both port and starboard outer decks, the Bridge is the perfect wildlife spotting location; many special expedition memories start up here.

Between the Bridge, and the port and starboard outer decks on Deck 3, monkey-island on Deck 4, the unique, large wooden deck, and the forward open-mooring deck at the front of the ship, MV Villa often provides perfect views from all angles.



CHEF'S BALCONY

As expedition professionals, we know that good food is a part of any polar adventure! Our chef will prepare and serve high-quality meals with global flavours that are guaranteed to please any palate, enriching your experience.

Enjoy the aft views from Chef's Balcony, the perfect spot to enjoy a delicious pre-dinner cocktail, or to light up a cigar after an exciting day on expedition, with the view of MV Villa's wake.





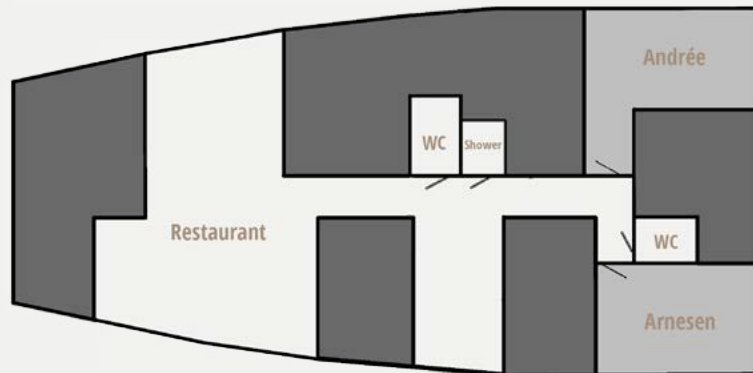
VESSEL SPECIFICATIONS

FLAG	Norwegian
NOTATIONS	General Cargo Unrestricted Navigation, Ice Class-B, Polar Code
LENGTH/BEAM/DRAFT	41.8m/10m/3.85m
ACCOMMODATION	12 Guests
CABIN CONFIGURATION	6 Cabins
CREW	8 Crew + 2 Expedition Team
CRUISING SPEED	10 knots
YEAR OF BUILD/REFIT	1975 / 2020
TENDERS	2 x Zodiac MILPRO Mark V with 60hp engines



DECK PLANS

DECK 1



DECK 2





POLAR ADVENTURES

Schiffs- und Flug- Expeditionen
in Arktis und Antarktis

OFFLINE-KATALOG-ANFORDERUNG

Sehr geehrte Reise-Interessenten. Vielen Dank für Ihr Interesse und den Download eines digitalen Kataloges im PDF-Format.

Gerne senden wir Ihnen zusätzlich bei weitergehendem Interesse die ausgewählten PDF-Inhalte als gedruckte Version auf dem Postweg.

Bitte nennen Sie unten den gewünschten Katalog und senden Sie dieses Formular per Post oder Fax an uns zurück.

Bitte senden Sie mir den aktuellen Katalog für folgendes Schiff/ Tour:

--

Bitte senden Sie den ausgewählten Katalog an folgende Adresse:

Vorname + Name

Telefonnummer

--	--

Strasse + Nr.

Faxnummer

--	--

PLZ + Wohnort

e-mail-Adresse

--	--

Bitte per Post an:

oder per Fax an 04131-54255

an POLARADVENTURES Schiffs- und Flug-Expeditionen in Arktis und Antarktis Heinrich-Böll-Str. 40 D-21335 Lüneburg
--

POLAR ADVENTURES

Schiffs- und Flug- Expeditionen in Arktis und Antarktis

**Unverbindliche Buchungsanfrage per Fax an 04131-54255 oder per Post an
Polaradventures, Heinrich-Böll-Str. 40, D-21335 Lüneburg, Deutschland**

Bitte unterbreiten Sie mir ein unverbindliches Angebot für folgende Leistungen:

- ☐ Veranstalter-Angebot mit Insolvenzversicherung nach deutschem Reiseveranstalterrecht + Preis in EUR
☐ Direkt-Angebot der ausländischen Reedereien (ausländ. Reiserecht + Preis in USD zum Tageskurs in EUR)

Schiffsname		
Reisename/ -Route		
Abfahrt von - bis (tt/mm - tt/mm/jj)		
Alternative Abfahrt (tt/mm - tt/mm/jj) (falls ausgebucht)		
Kabinenkategorie		
Alternative Kabinenkategorie (falls ausgebucht)		

- ☐ Doppelkabine ☐ Doppelkabine zur Einzelnutzung ☐ Halbe Doppelkabine zur Mitbenutzung

Zubringerflüge:

Abflughafen		
Hinflugdatum (tt/mm/jj)		
Rückflugdatum (tt/mm/jj)		
bevorzugte Airline		

- ☐ Economy-Class ☐ Business-Class

Zusätzliche Hotelübernachtungen:

Hotelname/Übernachtungsort		
Aufenthalt von - bis (tt/mm - tt/mm/jj)		
Hotelname/Übernachtungsort		
Aufenthalt von - bis (tt/mm - tt/mm/jj)		

Reiseversicherungen:

- ☐ keine
☐ Reiserücktrittskostenversicherung
☐ Komplettschutz (Reiserücktritts-, Kranken-, Unfall-, Gepäck- und Notfallversicherung)

Persönliche Angaben:

1. Reiseteilnehmer Vorname, Name / Geburtsdatum		
2. Reiseteilnehmer Vorname, Name / Geburtsdatum		

Angebot bitte:

<input type="checkbox"/> per Email an (Emailadresse)		
<input type="checkbox"/> per Fax an (Nummer)		
<input type="checkbox"/> per Post an (Vorname & Name) (Straße & Nr.)		
(PLZ & Wohnort)		