

POLAR ADVENTURES

Schiffs- und Flug- Expeditionen
in Arktis und Antarktis



Arktis Expeditions-

Seereisen

MV EXPLORER

MV POLARFRONT

MV VIRGO

POLARADVENTURES Schiffs- und Flug-Expeditionen in Arktis und Antarktis

Reiseagentur Heinrich-Böll-Str. 40 * D-21335 Lüneburg * Deutschland

Tel +49-4131- 223474 Fax +49-4131-54255 infos@polaradventures.de www.polaradventures.de



WATERPROOF®
CRUISES & EXPEDITIONS



EXPEDITION CRUISES
ARCTIC 2024
- POLARFRONT -



DISCOVER THE WORLD OF WATERPROOF!

Dear guest,

It has been over 20 years since I operated my first expedition and many have followed since. Organizing trips to the polar regions is a fascinating and challenging undertaking. Every voyage is designed around activities and sceneries that make your adventurous heart skip a beat.

Our Polar Expeditions onboard small expedition vessels are especially designed to escape the crowds and experience nature and wildlife in an unique way. The flexibility of a small expedition yacht makes it possible to optimize every opportunity to show you the best of the Arctic. We intend to reach places far removed from where most large vessels are sailing. Accompanied by experts and a small group of like-minded guests, you will uncover the wilderness of Polar regions. This is true expedition style traveling!

We will alter our plans to take advantage of (day)light, weather, wildlife sightings and other one-of-a-kind opportunities which can vary from day to day. Bring a good portion of adventurous spirit and be prepared for cold but rewarding days out at sea.

The combination of wildlife, beautiful scenery and a comfortable expedition ship, truly creates an unforgettable experience.

Marlynda Elstgeest

CEO & Owner

Waterproof Cruises & Expeditions



SIGNATURE TRIPS



BY WATERPROOF EXPEDITIONS

Our 'Waterproof Signature Trips' are carefully selected Waterproof branded trips with unique features. These small-group expeditions take place on luxury polar yachts, guided by our own team of experts. Small ship expedition cruising is the best way to get to those special places, remote islands and fascinating small harbours of the world. Especially on a luxury expedition yacht! Travelling with a group of like-minded people and experiencing wildlife, culture and nature up close while enjoying personal service. We take pride in our passion to share these specially designed experiences with you.



Your Expedition Leader - Rinie van Meurs

You will be accompanied on your journey by expert photographer and expedition leader Rinie van Meurs. He is the only person who spent 31 consecutive years as an expedition leader in Svalbard, and logged more than 250 cruises in Svalbard only! He has been fortunate to photograph and study many Polar Bears in the Arctic and has become passionate about these magnificent animals as well as other Arctic wildlife. He developed a broad interest in the entire sea ice ecosystem and marine life which resulted in his book 'The Future Polar Bear: The impact of the vanishing sea ice on an Arctic ecosystem'. Rinie will show you the most beautiful places in Svalbard and gives expert advice on photography in this unique environment.

Rinie: "The vast wilderness and the animals are the main reasons why I keep coming back to the Arctic. Each voyage is a new search for wildlife, and this 'chase' is what makes it interesting. I look at the weather forecast, ice charts, locations of other ships, and take into account my experiences from previous trips to make a plan. It's my goal to provide guests with as many spectacular sightings as possible, without disturbing the wildlife. I myself have been an avid photographer for 40 years, so I know what people want. For example, I take the light into account and inform them in advance about what (not) to do during a "close" encounter with a Polar Bear in the pack ice to maintain the encounter for as long as possible."





SVALBARD VOYAGE PROGRAM

*WATERPFOOF
SIGNATURE EXPEDITION*

EMBARKATION: LONGYEARBYEN, SVALBARD | **DURATION:** 10 - 11 DAYS

Our expedition takes you on an in-depth cruise exploring Svalbard. With **only 16 guests** onboard, it creates a unique personal experience. The long summer days offer plenty of time to explore and photograph the beautiful nature and polar animals of Svalbard. Depending on the ice conditions, we will attempt to reach the far north and edge of the pack ice of the archipelago.

Travelling on board a small polar yacht offers a rich experience. All guests can do landings at the same time as there is space in the zodiacs for everyone. In addition to the arctic landscape, we hope to encounter a wide variety of arctic wildlife including polar bears, whales, Svalbard reindeer, arctic foxes and many species of birds. During this voyage we pay extra attention to photographic opportunities. Zodiac cruising in the pack ice and frequent landings to capture the most beautiful sites ashore. Your expedition leader **Rinie van Meurs** will guide you on this polar adventure. With more than 30 years of leading trips in the Arctic, Rinie has a wealth of knowledge that he enthusiastically shares with his guests. During lectures on board he will tell you all about the animals, natural environment and history of Svalbard.

In expedition travel, the luxury is in the experience. Travelling with a small means flexibility and taking time to enjoy the destination. You will make new friends and create life-long memories with the people you meet on board. When cruising on our small expedition yacht Polarfront, the luxury can also be found on board! Spacious cabins and features like a sauna and hot tub will ensure you have a very comfortable stay. The experienced staff will accommodate your every need and chef-prepared meals provide the energy for your daily arctic adventures.



EXAMPLE ITINERARY

SVALBARD EXPEDITION CRUISE

This is a sample itinerary. We do our utmost to guarantee the best experience, but have no control of the weather, ice or wildlife. Our itineraries are flexible and ice conditions and wildlife behaviour will determine our plans. We take advantage of light and other one-of-a-kind opportunities which can vary from day to day. This is an expedition in the true sense of the word. The success of this trip is based on realistic expectations and your personal flexibility.

DAY 1 | Arrival & boarding

For your Svalbard expedition cruise, you fly to Longyearbyen where the expedition yacht is ready to welcome you in port. Boarding takes place late in the afternoon. You will have some time to get comfortable and meet the crew and your fellow guests. Departing from Longyearbyen the yacht will sail through Isfjorden, the gateway to the west coast of Svalbard. Almost the full spectrum of Svalbard's history, geology and biology can be found in this area. You will see wide coastal plains, steep glaciers and characteristic plateau-shaped mountains that are so unique to Svalbard.

DAY 2 - 10 | Places you might visit:

Kongsfjorden

The pyramidal peaks of the majestic Tre Kroner mountains overlook Kongsfjorden, an inlet comprising several cultural-heritage sites. From gigantic icebergs calving to bird colonies, nature reserves, and research stations, Kongsfjorden offers a unique array of riches. To top it off, you'll likely cross paths with a few reindeer and arctic foxes!

Edgeoya

Encounter glittering glaciers, keep watch for beluga whales and watch for ivory gulls. Weather and ice permitting we may sail along the most northerly point of the Svalbard archipelago, a favoured spot to a large colony of walrus. We may encounter the mighty polar bear in the pack ice. Looking for Polar bears is on the top of our wish list!



Prins Karls Forland & Poolepynten

A unique location we hope to visit during this expedition cruise is Poolepynten, a 1.5 kilometer long headland on the eastern coast of the island Prins Karls Forland. This location is famous for the large walrus colonies that often come ashore here, making it easy to admire them from close range. It's a spectacular sight to see these huge animals in their natural environment.

Krossfjorden & Magdalenefjorden

Krossfjorden offers a magnificent summary of Spitsbergen: glaciers falling into the sea (including the majestic Lillihook glacier front), snow-covered tundra, and historical sites.

We might also enter Magdalenefjorden, an impressive setting of majestic mountains and glaciers, with scree slopes that are home to thousands of birds. The extended graveyard and remains of blubber ovens set in the Gravneset Peninsula bear testimony to the many whalers who used to find shelter in the fjord. Nowadays, the land welcomes a growing number of walruses.

Smeerenburgfjorden

Once home to a busy whaling station and a starting point for major Arctic expeditions, this legendary fjord where glaciers form a spectacular ice front against the sea, has now been claimed by wildlife. Walruses and seals are a likely sight, and bears might wander about the slopes of steep, rugged mountains. We'll try to explore some of the impressive little auk colonies that can be found here.



Ice floes and Monacobreen

Further north we might encounter ice floes which we'll navigate in search of wildlife.

The impressive Monacobreen is a glacier reaching down into Liefdefjorden. The landscapes and icebergs provide some of the most spectacular views in the whole archipelago. We might head out to the island of Moffen where whales, walruses, and bears like to dwell, before proceeding beyond the 80th parallel north.

Ice permitting, we'll navigate through Wijdefjorden and catch a glimpse of its highest peaks and former trapper stations.

Hinlopen Strait and Murchisonfjorden

We might sail to Murchisonfjorden, a fjord on the western side of Nordaustland, in the northern part of Hinlopen Strait. It has many small islands, desert-like landscapes and some unique historical sites. One of the largest and most remarkable bird colonies on the archipelago is nestled among the steep cliffs made up of dark basaltic rock and bright limestone. Ice permitting, we'll resume our search for polar bears as we continue northeast.

If the pack ice is too dense to navigate further east, we will travel back via the north and west coast while visiting different places than before.

End of your voyage | Longyearbyen

You'll disembark in Longyearbyen. This is the end of your Waterproof Expedition, and we wish you a pleasant journey home.





GREENLAND VOYAGE PROGRAM

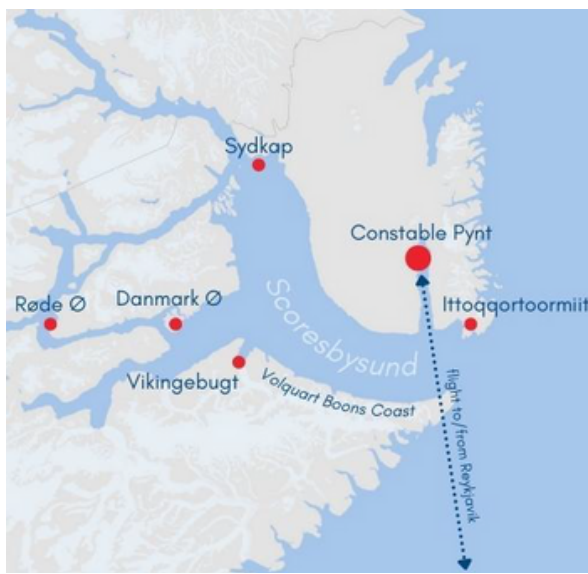
*WATERPROOF
SIGNATURE EXPEDITION*

EMBARKATION: REYKJAVIK, ICELAND | **DURATION:** 9 NIGHTS/ 10 DAYS

Join our exclusive small group voyage to Greenland's wild east coast for an authentic polar experience. On board our luxury boutique ship **Polarfront** we will take you on an in-depth exploration of **Scoresbysund**, the largest fjord system in the world. Scoresbysund is home to some of the most impressive glaciers, carving their way through an intricate landscape full of geological surprises. The waters are filled with enormous icebergs, and the variety of wildlife will make you want to keep your binoculars close at all times! Some of our most well-travelled guests and guides claim Greenland is by far the most spectacular destination in the Arctic.

The east coast is a perfect representation of authentic Greenland with small hunting and fishing villages and colourful wooden houses. We'll go ashore to meet the local Inuit and see how they live in this remote part of the world. We will attempt daily shore excursions and zodiac cruises to view icebergs and glaciers from up close. You'll have time to hike through glacial valleys and photograph the magnificent tundra, clad in autumn colours, where arctic wildlife might be hiding around each corner. We hope to see musk oxen, arctic hares, whales, seals, different species of sea birds and if we're extremely lucky, even walrus and polar bears. Our very experienced expedition leader Rinie van Meurs will guide you on this polar adventure. During lectures on board he will tell you all about the animals, natural environment and history of Greenland.

Most iconic for Scoresbysund are the immense icebergs. We will seize any opportunity for a zodiac cruise to get a closer look of these cathedral size sculptures. During our shore landings we might hike to higher grounds for spectacular views of the ice drifting through the fjords. When the opportunity arises, you may also have the chance to participate in a kayak activity or have fun on the pedal boat and immerse yourself in the vast Arctic landscape.



EXAMPLE ITINERARY

EAST GREENLAND - SCORESBYSUND

This is a sample itinerary. We do our utmost to guarantee the best experience, but have no control of the weather, ice or wildlife. Our itineraries are flexible and ice conditions and wildlife behaviour will determine our plans. We take advantage of light and other one-of-a-kind opportunities which can vary from day to day. This is an expedition in the true sense of the word. The success of this trip is based on realistic expectations and your personal flexibility.

DAY 1 | Arrival & boarding

Our adventure starts with a charter flight from Reykjavik (Iceland) to Constable Pynt (Greenland) where you will land at the small airport of Nerlerit Inaat. Upon arrival in Greenland our crew will meet you and take you to our comfortable expedition yacht MS Polarfront. Make yourself at home in your large suite and relax while enjoying a welcome cocktail and dinner as the ship departs for your adventure.

Please note: the charter flight is part of our mandatory flight package. We advise you to arrive in Reykjavik one day prior to the flight.

DAY 2 - 9 | Places you might visit:

Viking Bay - We might sail along the glaciated Volquart Boons Coast on the south banks of Scoresbysund. Here you can enjoy the sights of one glacier after another for miles. Sailing west we will find Vikingebugt (or Viking Bay). It's known for its impressive basalt columns stacked along the shoreline. We will attempt a zodiac cruise at the foot of these vertiginous cliffs.

Danmark Island - Not far from Vikingebugt lies Danmark Ø. The island is home to the remains of a long-abandoned Inuit settlement. This well-preserved archeological site shows the ancient winter and summer houses, as well as evidence of their arctic lifestyle. We might take the zodiac for a closer look at the vast glacier front and then disembark for a hike. The brown and reddish autumn colors of the tundra create a beautiful contrast against the bright white icebergs in the background.



Røde Fjord & Hare Fjord - Navigating through a maze of icebergs we will attempt to sail into some of the smaller branches of the fjord system, Røde Fjord and Hare Fjord. This might take us to Røde Ø, the Red Island. This beautiful red sandstone island looks like the surface of planet Mars. Its red rocky slopes, formed from sandstone sediments, provide a striking contrast to the dark blue Arctic waters and the vast blue and white icebergs that float silently in the waters of Scoresbysund. If we can find a place to land you can walk among the autumn vegetation in search of musk oxen and arctic hares.

Ø Fjord - If we are able to continue our voyage north you'll get to see one of the most impressive fjords in the world: Ø Fjord. This strait is around 74 km long, with high mountains on each side and colossal icebergs silently floating in the calm water. Many of these ice giants are stationary, anchored to the bottom of Scoresby Sund, creating an almost alien setting.

Sydkap - Our aim is to reach Sydkap in the north east of Scoresbysund. You might have the chance to disembark here for a hike up the mountain from where you have an incredible panoramic view over Hall Bredning fjord. This fjord is renowned for its dazzling display of light and offering some of the most iconic sights in Eastern Greenland. While you're enjoying the views, also keep an eye out for the elusive Arctic hare which can be seen here sometimes.



Ittoqqortoormiit - Located at the entrance of the fjord system, Ittoqqortoormiit is the largest inhabited village in Scoresbysund. The 400 inhabitants of this isolated outpost rely on the bounty of the Arctic to sustain them and live off traditional hunting and fishing. The next town is over 800 kilometers away! The village was established here in 1925 because of the rich waters at the mouth of Scoresbysund. At the post office you can buy stamps for your postcards, or just have a walk around town, say hello to the sled dogs and experience how people live out here in the remote arctic.

DAY 10 | Disembarkation

On the last day of our voyage you disembark in the morning after breakfast and say farewell to the crew and guides. You will be transferred to the charter airplane for your flight back to Reykjavik.





POLAR YACHT MS POLARFRONT

*SPACIOUS AND LUXURIOUS
SMALL POLAR VESSEL*

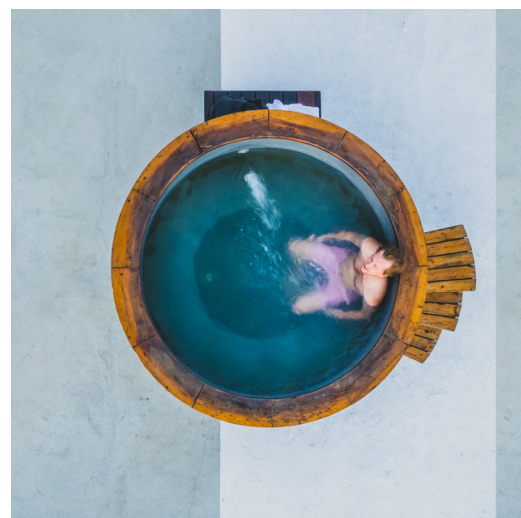
CAPACITY: 16 PASSENGERS | CABINS: 8 | DECKS: 3 | REFURBISHED: 2018 | LENGTH: 55M

MS Polarfront is a luxurious expedition vessel that is sturdy enough to bring you to destinations high up in the Arctic. It was created to face rough seas and harsh weather conditions, making it an excellent expedition ship. After its' years as a weather ship, MS Polarfront started a second life as an arctic expedition cruise vessel.



The ship was nicely refurbished in 2018 and is getting another upgrade in January 2024. Polarfront offers a luxurious and high-end experience for its' 16 passengers. There are 8 twin suites on the lower deck and all have at least 2 porthole windows. The suites are very spacious and each has their own comfortable bathroom with shower. You'll also find a hair dryer, bathrobes and bathroom products in your room.

Polarfront has a large outside deck space at the front of the ship as well as on the back, ideal for photography. On the aft deck you will also find a panoramic sauna and hottub to warm up after a long cold day out on the arctic seas, a great way to unwind and enjoy the scenery in a relaxing way. Inside, there's a comfortable salon, dining area, library and fitness room. There are 2 zodiacs, kayaks and a pedalboat on board to go on excursions and get closer to nature.



ACCOMMODATION



16 GUESTS IN 8 SPACIOUS SUITES



EXECUTIVE SUITE

- Very large suite with seating area
- Twin beds or double bed
- Large bathroom + separate toilet
- 3 closets and open shelves
- 4 porthole windows



SUPERIOR SUITE

- Spacious suites
- Twin beds or double bed
- Private bathroom
- 2 or 3 porthole windows
- At least 2 closets for storage



DELUXE SUITE

- Twin beds or double bed
- Private bathroom
- 2 or 3 porthole windows
- At least 2 closets for storage
- Situated in the front or middle the ship
- Suites #1 and #3 can be connected as a family room



DATES & RATES ARCTIC 2024

Polarfront - 16 guests

SVALBARD			
	Deluxe Suite	Superior Suite	Executive Suite
25 May - 03 June (10 days / 9 nights)	€ 9.800 pp	€ 10.200 pp	€ 11.500 pp
03 June - 13 June (11 days / 10 nights)	€ 10.400 pp	€ 10.800 pp	€ 12.000 pp
22 June - 01 July (10 days / 9 nights)	Waitlist	Waitlist	Waitlist

GREENLAND			
	Deluxe Suite	Superior Suite	Executive Suite
11 Aug - 20 Aug (10 days / 9 nights)	€ 10.900 pp	€ 11.500 pp	€ 12.700 pp
Extra: Mandatory charter flight package Iceland - Greenland: € 1.595 pp			

All prices are per person, based on double occupancy and depending on availability. For single travellers we can offer shared twin cabins on request. If you prefer a double cabin for single use, please note that a single supplement is applicable.

Included in your voyage:

- Accommodation on board
- Full board, coffee and tea
- Nautical activities (pedal boat, kayaking)
- Use of sauna & hot tub on board
- Use of protective zodiac suits
- Lectures by the experienced guides
- All service taxes and port fees

Not included:

- International and domestic flights
- All items of a personal nature such as laundry, meals ashore, bar and telecommunication charges
- Gratuities
- Pre and post voyage excursions and hotel

MANDATORY FLIGHT PACKAGE GREENLAND

Our expedition cruise in Greenland starts with a charter flight from Reykjavik (Iceland) to Constable Point (Greenland) where the crew will welcome you at the small airport of Nerlerit Inaat. The charter flight is part of our mandatory flight package. We advise you to arrive in Reykjavik one day prior to the flight.

The mandatory flight package € 1.595 per person (per roundtrip):

- 11 Aug 2024 Reykjavik - Constable Point
- 20 Aug 2024 Constable Point - Reykjavik





IMO 7608708

POLARFRONT

MARSEILLE



WATERPROOF®
CRUISES & EXPEDITIONS




WATERPROOF®

C R U I S E S & E X P E D I T I O N S



WINTER WHALES
OF NORWAY 2024



SNORKELING WITH ORCAS & WHALES

*DISCOVER THE WORLD
OF WATERPROOF!*

Dear Explorer,

It has been over 20 years since I operated my first expedition and many have followed since. Organizing trips to the polar regions is a fascinating and challenging undertaking. Every voyage is designed around wildlife experiences and sceneries that make your heart skip a beat.

During the winter months, we operate our **"Winter Whales of Norway"** expeditions in Northern Norway. A unique experience for anyone interested in orcas, whales, white-tailed eagles, Arctic winter, northern lights and breathtaking landscapes.

Travelling on board a small expedition ship creates the best opportunity to view the orcas and whales in the fjords. Being in the water with these remarkable animals always leaves me in awe, and I know I am not alone in my everlasting admiration for these amazing creatures.

We will alter our plans to take advantage of (day)light, weather, wildlife sightings and other one-of-a-kind opportunities which can vary from day to day. Bring a good portion of adventurous spirit and be prepared for cold but rewarding days out at sea.

The combination of wildlife, beautiful scenery and the amazing northern lights, truly creates an unforgettable experience of nature.

Marlynda Elstgeest

CEO & Owner
Waterproof Cruises & Expeditions





VOYAGE PROGRAM

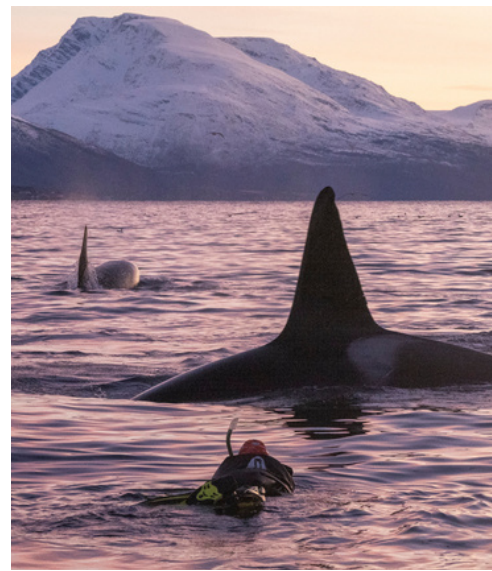
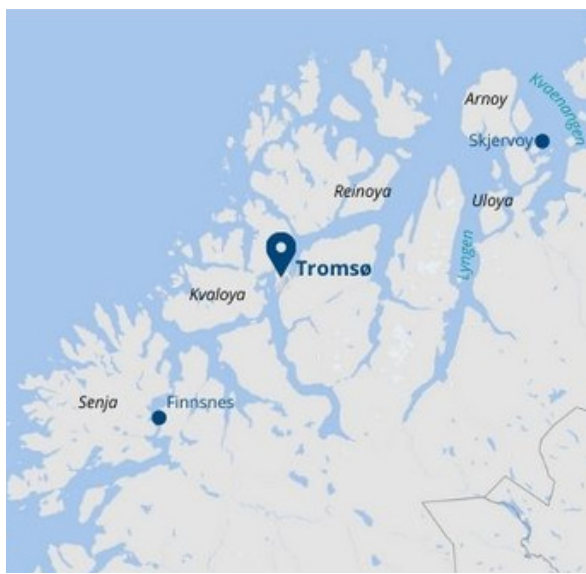
WINTER WHALES OF NORWAY EXPEDITION CRUISE

EMBARKATION: TROMSØ, NORWAY | DURATION: 6 NIGHTS/ 7 DAYS ON BOARD

Our "**Winter Whales of Norway**" expedition cruises depart from Tromsø, the gateway to the Arctic, situated 350km above the Arctic circle. For only a very short period each winter, Northern Norway is the place of the largest gathering of orcas and whales in the world. They follow the enormous amount of spring-spawning herring that can be found in the fjords. This offers the unique opportunity to snorkel with wild orcas and watch their behaviour under water.

Tromsø is easily accessible by plane from most European countries. Embarkation starts around 16.30 in the afternoon of the first day. Our expedition guides will welcome you at the meeting point in Tromsø and escort you to one of our comfortable ships. Once everyone is settled on board, we venture into the fjords in search of orcas and humpback whales. The advantages of travelling onboard one of our comfortable ships are numerous. Especially because we don't have to return to port, we can maximise our time to look for whales. With the assistance of local experts, fishing vessels and the science community, we stay in touch about the where-abouts of the animals. For five full days, we search for schools of herring and pods of orcas and humpbacks in the protected surroundings of the beautiful fjords, waiting for a chance to swim with them. Ultimately we depend on nature and weather conditions for the success of our trip. This means you may spend some days searching without success until an opportunity for snorkeling arises.

Our two expert guides will inform you about the behaviour of the orcas and whales, and how to snorkel with them in a responsible way. When whales have been spotted nearby, our guides will give you the sign to put on your snorkeling drysuit while they lower the zodiacs in the water. These small boats are our main method of transportation to get within a safe distance of the animals. It's an absolute privilege to see these enormous animals in their natural habitat. Carefully slide into the water and enjoy the moment!



Whale watching from the ship:

The bridge is a great place if you like to take your binoculars and scout the horizon for wildlife. When animals like whales have been spotted, our guides will notify everyone onboard, so you won't miss anything. Outside on the spacious deck, you'll find good spots for photographing whales, orcas and the beautiful scenery surrounding the ship.

Whale watching from the zodiac:

If you choose not to go snorkeling, no problem! You'll have just as much fun joining the zodiac excursion for a splendid topside photography experience. We provide comfortable, and waterproof zodiac suits to keep you warm.

Educational lectures:

Our guides offer an educational lecture program about whale conservation, research and other interesting topics.

The dark hours:

Winter is the perfect time for **Northern Light** sightings. During the dark hours we usually stay at anchor or we may go ashore to find a good spot to photograph the Aurora. Our guides are more than happy to assist you in adjusting your camera or phone for some spectacular photos. Enjoy the warm and cozy comfort of the expedition ship. Take a moment to unwind in the sauna after a day out in the cold, or gaze at the skies from the hot-tub on deck.

Depending on the weather conditions, we also offer the **"Polar Plunge"**, a chilling jump into the polar water! Not many people can say they swam above the Arctic circle in the dark, a once in a lifetime opportunity!

Our voyage ends in the same place where it started, in Tromsø. After breakfast on the last day, you will say farewell to the crew and your fellow expeditioners.

IMPORTANT DISCLAIMER!

A flexible attitude is paramount for our expeditions and the key to success. We are dealing with weather and wildlife, elements which are beyond our control. Therefore, we can't guarantee to see orcas or whales. Even when we do encounter whales and orcas, we can't guarantee the conditions are suitable for snorkeling.



INFORMATION & DETAILS

*NEED TO KNOW
BEFORE YOU GO*



SNORKELING PROCEDURES



During our trips it is our goal to go snorkeling as often as possible. Being on a small ship gives us the advantage to be on location when daylight starts and we can easily travel around in the fjords to find the whales.

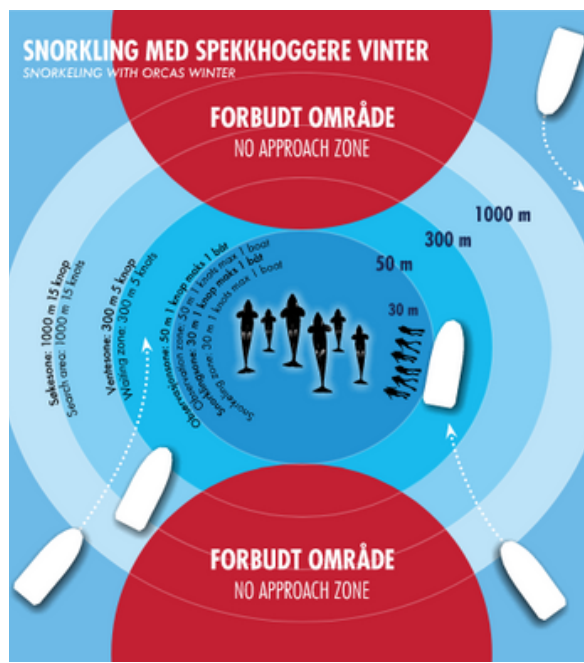
Approaching whales will always be done cautiously, at a low speed towards the side of the pod. When snorkelers of other boats are already in the water, other zodiacs must wait their turn at least 50 metres away. To offer the best possible experience, we only take a maximum of 8 snorkelers per zodiac.

When the guide decides it's safe to go snorkeling, the participants go into the water slowly. Once in the water;

- Snorkelers should keep visual contact with the guide on the zodiac so they can quickly respond to signals;
- Snorkelers have to keep a distance of at least 20 metres between them and the whales and must stay with the group at all times;
- Touching the whales or approaching them to make contact is strictly forbidden;
- Avoid diving, splashing and making noise as much as possible.

IMPORTANT! Level of fitness

The snorkeling activity is intended for persons in reasonably good health. You need to have a certain level of fitness and strength in order to participate. Actively swimming and getting in and out of the zodiac can be challenging. You have to be able to lift yourself out of the water, with the help of small ladder, and into the zodiac. If you are unable to go snorkeling, you are still more than welcome to join the zodiac for topside whale watching.





SNORKELING EQUIPMENT

We provide high quality polar snorkeling equipment, designed and developed by our sister-company **Waterproof International** in Sweden. An award-winning company and experts in designing high quality drysuits and undergarment.

Your FREE snorkeling package consists of:

- Waterproof Snorkeling Drysuit (*only if size is available*)
- Waterproof High Visibility Hood
- Waterproof 7 mm Mittens
- Waterproof Marine Boots
- Fins, Snorkel and Mask



Drysuit Sizes

Please note that we only have a limited range of drysuit sizes available on board.

We offer the following sizes: S - M - L - XL - XXL

Refer to our [size chart here](#) for details.

We cannot be held liable if your chosen size does not fit. If you are uncertain of a fitting size, we strongly recommend to bring your own drysuit which you have tried out prior to the trip!



Polar Thermal Undergarment - Highly recommended!

We offer rental thermal overalls. These overalls have been specifically designed to wear under your drysuit and to keep you warm while snorkeling in cold water. They are very comfortable and easy to put on, and can also be worn as a wind proof outer layer for example while whale watching on deck.

Book now for only **€ 80 per person**

Sizes: S - M - L - XL - XXL



Thermal overalls



SUSTAINABLE WHALE WATCHING



MANAGING EXPECTATIONS

Rule number one when it comes to wildlife watching; **Nothing is guaranteed!** We will always do our utmost to offer you the best experience but cannot guarantee that all activities will take place as we've outlined in advance. We deal with wild animals in open water and unpredictable weather conditions. Therefore we ask all our guests to set realistic expectations and be flexible to make this experience a success.

Our guides are constantly on the lookout for orcas and whales. However, the whales are not always in the same spot and it might take some time to find them. The search is part of the adventure. Some days you might not see any whales or orcas at all. Don't let this get you down. Enjoy the beautiful scenery, the facilities of the ship and the company on board.

Approaching whales will always be done cautiously, at a low speed towards the side of the pod. When snorkelers of other boats are already in the water, other zodiacs must wait their turn at least 50 metres away.

The captain and crew decide whether it's safe to launch the zodiacs from the ship. There are reasons why the guides might not approach the whales. For example, there are too many other vessels close to the whales or the animals are not feeding but underway to another location.

In Northern Norway, there are several popular locations where large numbers of orcas and whales return every year. These locations may be crowded with boats, creating unsafe situations for people and animals. This is why we often divert to other locations in search of whales away from the crowds.



Supporting Norwegian Orca Survey

Norwegian Orca Survey is a non-profit organization dedicated to researching and monitoring orcas in Norway. Using ground-breaking research methods and photo identification, they gather much-needed data for orca conservation. Waterproof Cruises & Expeditions is proud to partner with Norwegian Orca Survey. To support their research we donate an amount for each passenger that travels to Norway with us. On board, you will receive more information about our partnership and the ways you can help the Norwegian Orca Survey research.





WEATHER & DAYLIGHT



Daylight



Twilight



Night

WINTER IN NORTHERN NORWAY

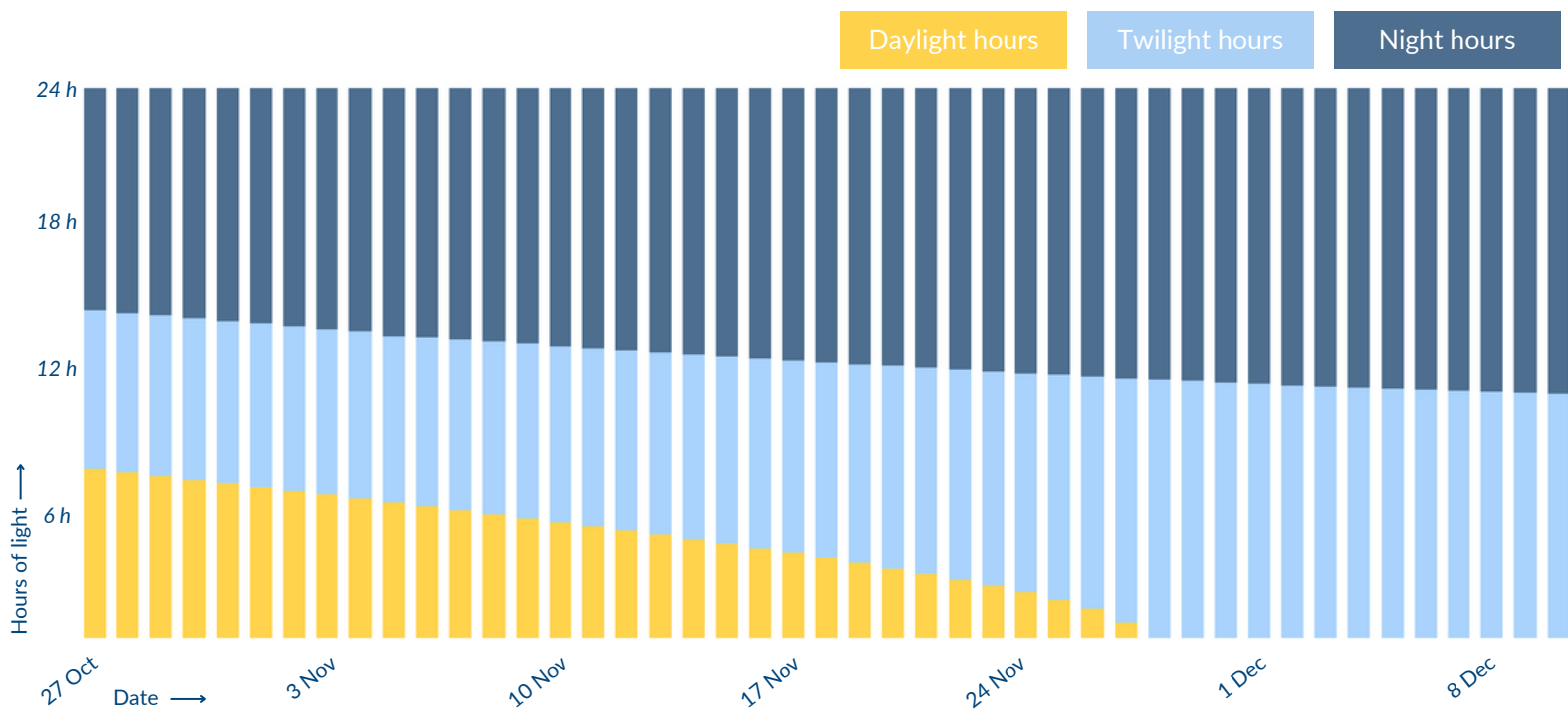
Our voyages take place above the Arctic Circle during winter time. You might expect lots of snow and ice, but the waters of the Gulf Stream give Northern Norway a rather mild climate for a place at this latitude. The average temperature will likely be around freezing and snow usually doesn't fall until late November. You can experience anything from storms, grey skies and choppy seas to sunny days with calm water. It's the weather that often determines whether we can go snorkeling or not.

DAYLIGHT HOURS & POLAR NIGHT

At the start of our season, end of October, we will enjoy several hours of daylight each day. Moving towards the end of the year, days shorten quickly. From the end of November, you will experience the Polar Night, the time of year when the sun does not rise above the horizon. Something you can only experience above the Arctic circle! The iconic Arctic light attracts many people to Northern Norway each winter. On clear days, the twilight hours offer a very particular luminosity and magnificent colors for photography. The faint sunlight is reflected off the water and the snow-capped mountains, transforming the fjords into a magical winter scenery. This twilight can last for several hours, plenty of time to capture the most breathtaking photos while the colors slowly change from pink and purple to deep blue.

MOTHER NATURE

All elements of nature have to come together in order to go snorkeling. The weather has to be calm, the whales nearby, and we need enough light to safely go in the water. Each day can be different and there's not one trip better than the other. Our experience over the past years has learned us the weeks from end of October until mid-December offer the best chances. But keep in mind, it all comes down to mother nature!



NORTHERN NORWAY



TROMSØ REGION

Tromsø, situated at 69° North, is considered the most northern city in the world with a population of around 50.000. The city center of Tromsø contains the highest number of old wooden houses in Northern Norway, the oldest dating back to 1789. The Arctic Cathedral, a modern church from 1965, is probably the most famous landmark in Tromsø.

We recommend you arrive at least one day prior to embarkation, just in case your flight might be delayed. This also gives you the opportunity to explore the town's museums and cozy city centre or to go on an excursion.

We offer various optional activities, like dogsledding and snowmobile safaris. Please find [more information here](#). These optional activities depend on snowfall and are usually available from the first of December. If you would like to sign up for (one of) these activities, please let us know and we will arrange this for you in advance.

Meeting point

Our meeting point is at the **Clarion Hotel The Edge**, which is close to where our ships are usually docked. You will receive more detailed information several weeks prior to departure.

Hotels

There are plenty of nice hotels and other accommodations to choose from for your stay in Tromsø. The town is not big so you are never far away from the city centre and the harbor.

Airport

Tromsø Airport is situated at Langnes on the western part of the island of Tromsøya in Tromsø, Norway. The main scheduled airlines operating at Tromsø are Scandinavian Airlines, Norwegian and Widerøe.

Transport

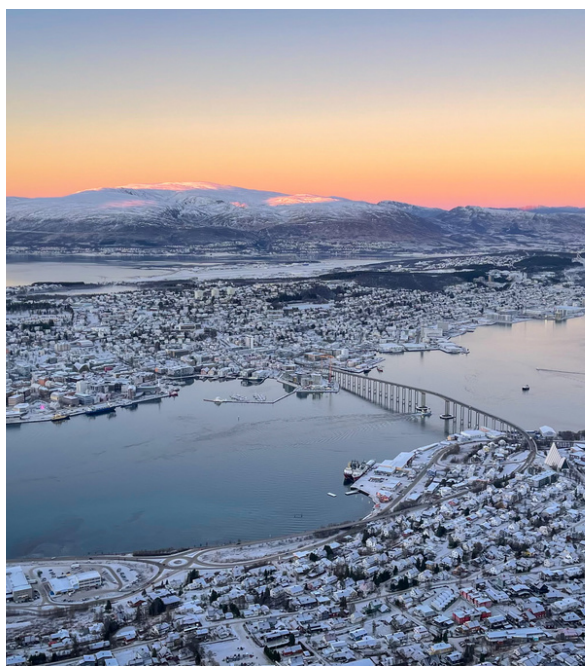
Flybussen: The airport express coach stops at several hotels in central Tromsø and takes 10-15 minutes to Tromsø city center.

Local bus: Route 40 and 42 stop at the airport and take approximately 15-20 minutes.

Taxi: The taxi stand is located directly outside the arrival hall. The travel time to Tromsø city center is approximately 10 minutes.

Taxi companies at the airport:

Tromsø Taxi: (+47) 03011 Din Taxi: (+47) 02045



MEET OUR EXPEDITION SHIPS

WELCOME ON BOARD





VIKINGFJORD

NEW LUXURY EXPEDITION YACHT

CAPACITY: 12 PASSENGERS | CABINS: 8 | DECKS: 3 | REFURBISHED: 2023 | LENGTH: 42M

Vikingfjord is a luxury expedition ship with great environmental credentials and an ice strengthened hull for exploring the polar regions. It has recently been renovated to reduce its impact on the environment and the interior has been completely redesigned. The refurbished polar vessel is one of most environmentally friendly small ships sailing in the Arctic today.



With its' new and light Scandinavian design interior, Vikingfjord offers great comfort for its 12 guests. Divided over decks 1, 2 and 3, you'll find 6 double/twin cabins and 2 dedicated single cabins, each with their own ensuite bathroom. The open plan observation lounge on deck 2, with its' large rear facing windows, is the heart of the ship. It has various comfortable seating areas for all guests to sit and enjoy the polar scenery, and direct access to the outside deck. The lounge is a place to chat with fellow expeditioners, listen to presentations or go through your photos of the day while enjoying a nice drink from the bar. You can enjoy freshly prepared meals in the restaurant on deck 1. And for those looking to heat up after a cold day in the arctic, the panoramic hot tub and sauna are at your disposal on deck 3.



ACCOMMODATION



12 GUESTS IN 8 SUITES



DOUBLE CABIN

- For 2 Guests
- Comfortable double bed
- Ensuite shower and toilet
- 15 m²
- Located on deck 3
- Windows
- Desk & chair
- Wardrobe



TWIN/DOUBLE CABIN

- For 2 Guests
- Comfortable Twin or Double Bed
- Ensuite shower and toilet
- 15 m²
- Located on decks 1 & 2
- Window
- Desk & chair
- Wardrobe



SINGLE CABIN

- For 1 Guest
- Comfortable single bed
- Ensuite shower and toilet
- 10 m²
- Located on decks 1 & 2
- Window
- Desk & chair
- Wardrobe





LUXURY YACHT EXPLORER

*EXPEDITION CRUISING
WITHOUT COMPROMISING ON
COMFORT*

CAPACITY: 12 PASSENGERS | CABINS: 9 | DECKS: 4 | REFURBISHED: 2021 | LENGTH: 46M

The polar yacht Explorer was originally built in 1994 as an oceanographic research vessel. It has recently been renovated to reduce its impact on the environment and the interior has been completely redesigned. The refurbished polar yacht now offers the most refined and high-end small ship cruising experience in the Arctic. With **only 12 guests** on board, it will like you are on a private luxury expedition!



The spacious open plan lounge has comfortable seating areas where you can relax and attend lectures. The panoramic windows offer an almost 360° view of the fjords. On the multiple level observation decks you will have plenty of opportunities for photography, or you can choose to spend some time on the spacious bridge with large windows, scanning the horizon looking for wildlife. During the darker hours, the gym, sauna, and jacuzzi are a great way to relax. On the upper deck: 2 Single cabins and 2 comfortable Executive Suites with floor-to-ceiling windows, double beds and direct access to the deck. On the lower deck you find 2 Superior Suites, and 3 Deluxe Suites for single travellers. Each room has windows or portholes.



ACCOMMODATION



EXPLORER - 12 GUESTS



EXECUTIVE SUITE

- Spacious suite
- Double bed
- Luxury bathroom with walk-in shower
- Desk with chair
- Floor to ceiling window
- Situated on the upper deck
- Direct access to outside deck



SUPERIOR SUITE

- Comfortable suites
- Double bed or twin beds
- Luxury bathroom with walk-in shower
- Porthole windows
- Situated on the lower deck



SINGLE DELUXE SUITE

- For single travellers
- Comfortable suite for private use
- Double or twin beds
- Luxury bathroom with walk-in shower
- Porthole windows
- Situated on the lower deck



SINGLE CABIN

- Comfortable cabin for single travellers
- Single bed
- Bathroom
- Seating area
- Picture window
- Situated on the upper deck

Refit planned
in 2024



BOUTIQUE YACHT POLARFRONT

*SPACIOUS AND LUXURIOUS
SMALL POLAR VESSEL*

CAPACITY: 16 PASSENGERS | CABINS: 8 | DECKS: 3 | REFURBISHED: 2018 | LENGTH: 55M

MS Polarfront was created to face rough seas and harsh weather conditions, making it an excellent expedition ship. After her years as a weather ship, MS Polarfront started a second life as an arctic expedition cruise vessel. The ship was nicely refurbished in 2018 and is getting another important upgrade in January 2024. Polarfront will be fitted with electric propulsion & power management systems. Resulting in reduced fuel consumption, energy savings, reduced emissions and allowing the ship to reach the best standards of environmental protection. Polarfront will be extremely quiet with almost no vibrations. Meaning more comfort on board for guests, and less noise transmitted into the water.



Polarfront has large outside decks, ideal for photography. On the aft deck you will find a panoramic barrel sauna and a hottub to warm up after a long cold day, a great way to unwind and enjoy the darker hours. Inside, there's a comfortable salon, dining area, library and fitness room. Polarfront offers luxurious accommodation for 16 guests. The 8 twin suites are very spacious and each has their own comfortable bathroom with shower and at least 2 portholes.



ACCOMMODATION



POLARFRONT - 16 GUESTS



EXECUTIVE SUITE

- Very large suite with seating area
- Twin beds or double bed
- Large bathroom + separate toilet
- 3 closets and open shelves
- 4 porthole windows



SUPERIOR SUITE

- Spacious suites
- Twin beds or double bed
- Private bathroom
- 2 or 3 porthole windows
- At least 2 closets for storage



DELUXE SUITE

- Twin beds or double bed
- Private bathroom
- 2 or 3 porthole windows
- At least 2 closets for storage
- Situated in the front or middle the ship
- Suites #1 and #3 can be connected as a family room



EXPEDITION SHIP VIRGO

*REAL EXPEDITION STYLE
POLAR YACHT*

CAPACITY: 12 PASSENGERS | CABINS: 9 | DECKS: 3 | REFURBISHED: 2021 | LENGTH: 42M

MS Virgo is an ideal ship for intimate small group expeditions to Northern Norway, offering bright and spacious inside areas and large deck spaces outside. She was originally built as a Swedish buoy laying vessel and has been completely refurbished to prepare her for new adventures as a leisure expedition ship.



Virgo can take up to **12 guests** in 9 cabins. All cabins have fresh new Scandinavian interiors and private bathrooms. There are 3 comfortable double cabins located on the upper deck, and 6 single cabins on the lower deck. Each cabin has a desk with a chair, some storage space and at least one window or porthole. A great feature of MS Virgo is the spacious lounge on deck 2. The large windows offer good viewing opportunities in all directions and there's plenty of space for photo editing, listening to lectures or just having a drink with fellow travelers. It's the heart of the ship and a nice place to spend time during the darker hours. Food will be served in the dining area three times per day, however we intend to be flexible should any wildlife suddenly appear. The chef has a varied and tasty menu that can be adapted to special dietary needs.



ACCOMMODATION



VIRGO - 12 GUESTS



SUPERIOR SUITE

- Large cabin with seating area
- Twin beds
- Bathroom
- Ample storage space
- A desk with chair
- 2 windows
- Situated on the upper deck



DELUXE TWIN CABIN

- Twin beds
- Bathroom
- Ample storage space
- A desk with chair
- 1 window
- Situated on the upper deck



SINGLE CABIN

- Single bed
- Bathroom
- Ample storage space
- A desk with chair
- 1 window or porthole
- Situated on the lower deck

DATES & RATES 2024



Embarkation: Tromsø, Norway | **Meeting time:** 16.30 h. | **Duration:** 6 days / 7 nights

EXPLORER - 12 guests



Prices

Executive Suite	€ 6.300 pp
Superior Suite	€ 5.900 pp
Single Deluxe	€ 6.100 pp
Single Cabin	€ 5.900 pp

Dates

28 Oct - 03 Nov 2024
03 Nov - 09 Nov 2024
09 Nov - 15 Nov 2024*
15 Nov - 21 Nov 2024
21 Nov - 27 Nov 2024
27 Nov - 03 Dec 2024

*Waiting list

POLARFRONT - 16 guests



Prices

Executive Suite	€ 5.600 pp
Superior Suite	€ 5.100 pp
Deluxe Suite	€ 4.900 pp

Dates

27 Oct - 02 Nov 2024*
02 Nov - 08 Nov 2024*
08 Nov - 14 Nov 2024
14 Nov - 20 Nov 2024
20 Nov - 26 Nov 2024
26 Nov - 02 Dec 2024
02 Dec - 08 Dec 2024

*Waiting list

VIRGO - 12 guests



Prices

Superior Suite	€ 5.100 pp
Deluxe Cabin	€ 4.800 pp
Single Cabin	€ 5.200 pp

Dates

29 Oct - 04 Nov 2024
04 Nov - 10 Nov 2024
10 Nov - 16 Nov 2024*
16 Nov - 22 Nov 2024
22 Nov - 28 Nov 2024*
28 Nov - 04 Dec 2024*
04 Dec - 10 Dec 2024

*Waiting list



TERMS & CONDITIONS

All prices are per person, based on double occupancy and depending on availability. We have dedicated single cabins on board our ships Explorer and Virgo. On board Polarfront we can offer shared twin cabins on request (depending on availability). If you prefer a double cabin for single use, please note that a single supplement is applicable.

Included in your voyage:

- Accommodation on board
- Breakfast, lunch & dinner
- Coffee, tea & water throughout the day
- Snorkeling activity & snorkeling gear
- Warm zodiac suits for non-snorkelers
- Use of sauna & hot tub on board Polarfront & Explorer
- Lectures by the experienced guides
- All service taxes and port fees

Not included:

- Rental thermal overalls (€ 80 p.p. at time of booking)
- Flights & transfers
- All items of a personal nature such as laundry, bar drinks, meals ashore and telephone charges
- Gratuities
- Pre and post voyage excursions and hotel.

Insurances:

Travel Insurance with worldwide medical evacuation coverage is mandatory. We also strongly recommend you take out a trip cancellation insurance. This will cover your cancellation costs in case you need to cancel your trip after you confirmed your booking.

PAYMENTS

If you are interested in signing up, please inform us by e-mail. We will then send you our option booking form. After completing this form, you will receive an invoice. We require a 30% deposit to confirm your booking. Once we have received your deposit, your reservation is confirmed and your place onboard guaranteed. The final payment is due 3 months prior to departure.

We accept payments via bank transfer or by credit card (Visa, Mastercard or American Express). When paying via bank wire transfer, please make sure to include all bank charges for both sending and receiving banks. The bank information and payment details will be provided on the invoice.

If you prefer to pay by credit card, we will send you a secure credit card payment request via e-mail. Please note that we charge a 3% service fee for credit card payments.

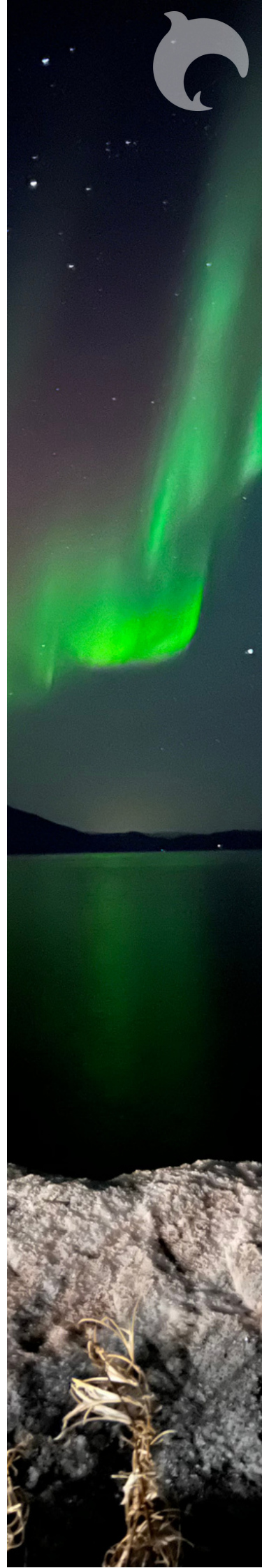


Photo credits

We would like to thank our dedicated expedition guides, on board photographers and many guests for all the breathtaking images they allow us to use in our website, brochures and marketing.

With special thanks to:

Jens Wikström, Elisabeth Robinson, Rinie van Meurs, Szymon Niezabitowski, Johnny van Vliet, Debbie Bouma, David Gonzalez, Dan Zafra & Scott Portelli.



WATERPROOF®
C R U I S E S & E X P E D I T I O N S

www.waterproof-expeditions.com

info@waterproof-expeditions.com

+31 (0) 858 771 583